

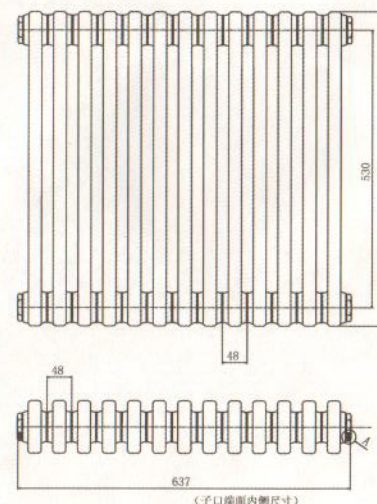
# Radiator Name: COLONA

This product must be fitted only by a fully qualified installer

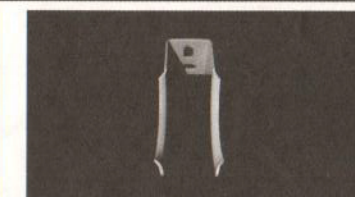
# REINA

Description	Illustration	Qty
Radiator		1
Bracket		4
Air Vent		1
End Plug		1

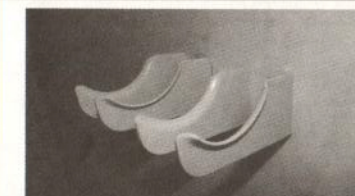
Description	Illustration
Fixings choose the appropriate fixing for the wall material if required	
PTFE tape	
Electric drill	
Masonry drill bit appropriate to the fixings	
Adjustable spanner	
Radiator valve Hex Key	
Flat head and Philips head screw drivers	
1 Lock shield valve and 1 Gate or Thermostatic valve	
Spirit level	
Measuring tape	



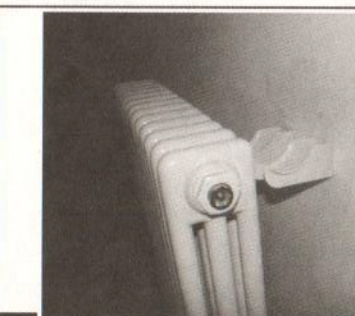
1 Put the spacers on the brackets.



2 Put the fixing screw, bracket and nut in a combinations.



3 Fix the units against the wall with screw.



4 Hang the radiator on the brackets.

## GENERAL RECOMMENDATION

Before fitting the radiator it is necessary to wash out the heating system to remove any existing mud, scale, work residues, traces of flux, oil etc. When the system water pH is outside the 5.5 - 8.5 range and/or when the dissolved is above 0.1mg/litre, it is always needed to protect the heating system components (the radiator is one of these) with a proper chemical treatment compatible with all parts in contact with water (Silicon rubber too). In order to fit the radiator to the wall, it is necessary to choose the proper fixings for the wall material. If the system water exceeds 50 centigrad degree, please install a warning mark near the radiator to avoid any accidental scalding. Clean the radiator surface only with a soft cloth to avoid scratching the finish and do not use chemical agents during cleaning operations. It is prohibited to climb on the radiator. Maximum