

Lifetime guarantee

Impey Showers Limited guarantees its range of branded showering products against faulty materials or manufacture for a Lifetime, provided that they have been installed and maintained in accordance with the manufacturer's instructions.

The guarantee extends to non-electrical products in general use and excludes normal wear and tear. For products such as taps, shower valves, bathroom accessories, waterproofing and electrical products, the standard manufacturer's guarantee will apply. Where products included in the Lifetime guarantee are used for commercial use, such as hospitals, nursing homes or hotels, a 5 year guarantee will be applicable.

Parts that are defined as wearing parts, such as seals, seat pads etc, are subject to a 5 year guarantee. If in our opinion the product has been modified, neglected, misused or is the subject of accidental damage the guarantee will not be applicable.

Impey Showers Limited has a policy of continuous improvement and therefore reserves the right to revise or amend the specification of any product without notice. In situations where a product has failed, subject to the terms of the guarantee, and a direct replacement is no longer available, Impey Showers Ltd will replace it with the nearest equivalent product.

The liability of Impey Showers Limited does not extend to consequential loss or damage arising from the defective product and is limited to the price of the original goods supplied by Impey Showers Limited. The guarantee is in addition to your statutory rights.

Full terms and conditions available on our website  
www.impeyshowers.com



Impey Showers Limited, Conquest Business Park,  
Ilton, Somerset TA19 9EA  
General /Technical no. 01460 256 080  
Sales no. 01460 256090 • Fax no. 01460 259800  
Email: info@impeyshowers.com

www.impeyshowers.com



facebook.com/impeyshowers

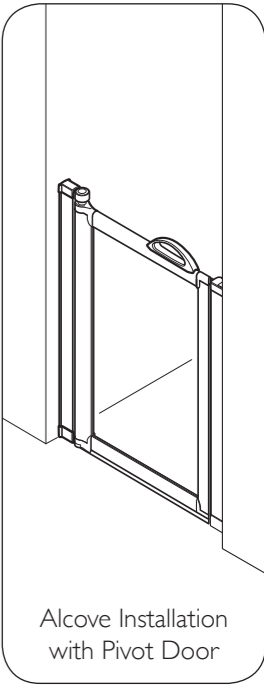
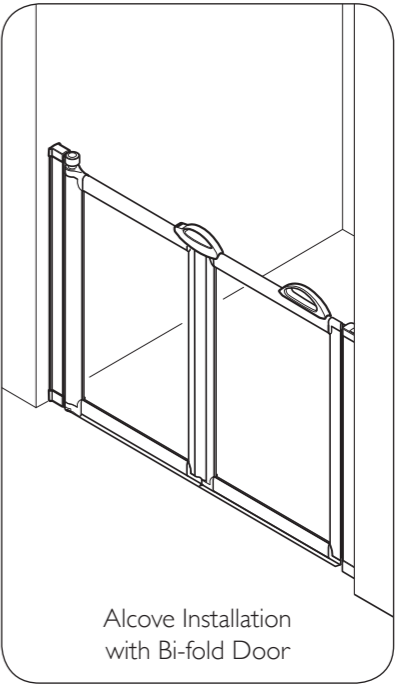
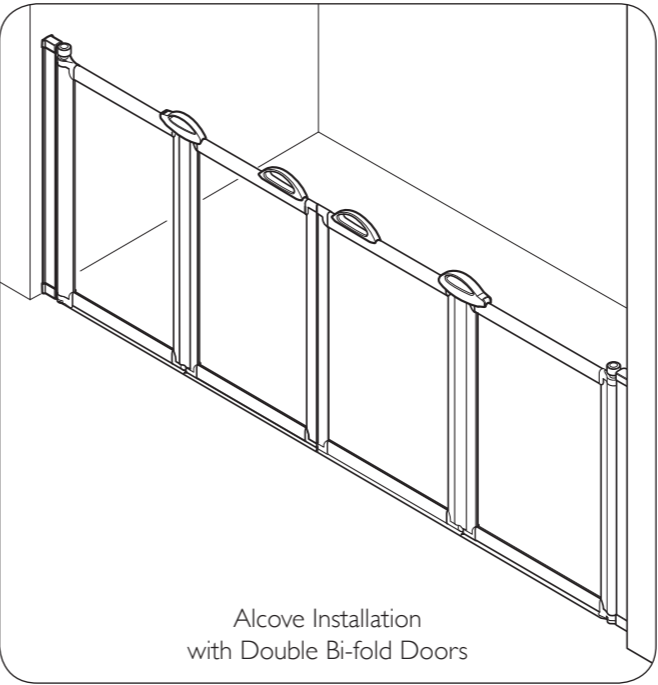
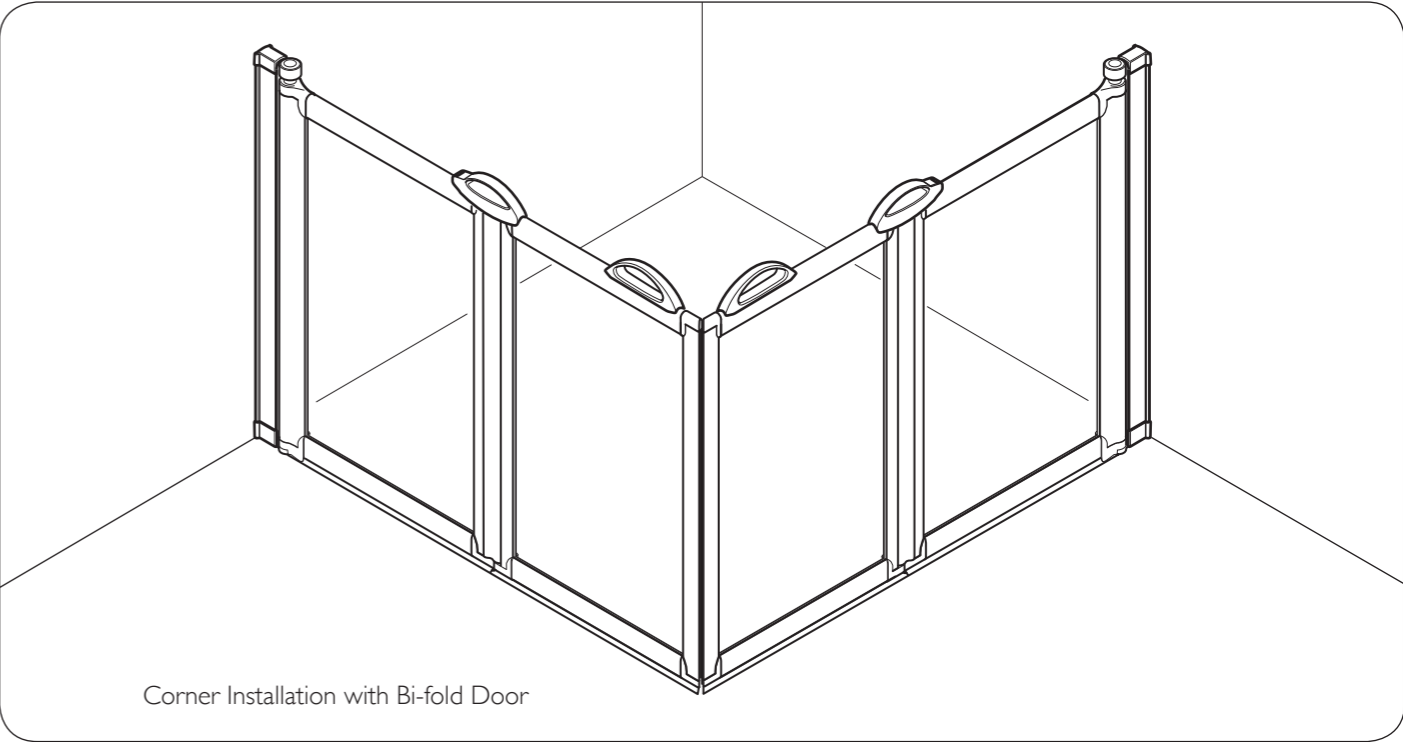


@impeyshowers



FreeGlide Half Height Door  
Installation Guide

The installation of the Curtain rail is covered in a separate installation guide.  
This instruction is a general guide for installing the FreeGlide enclosures.

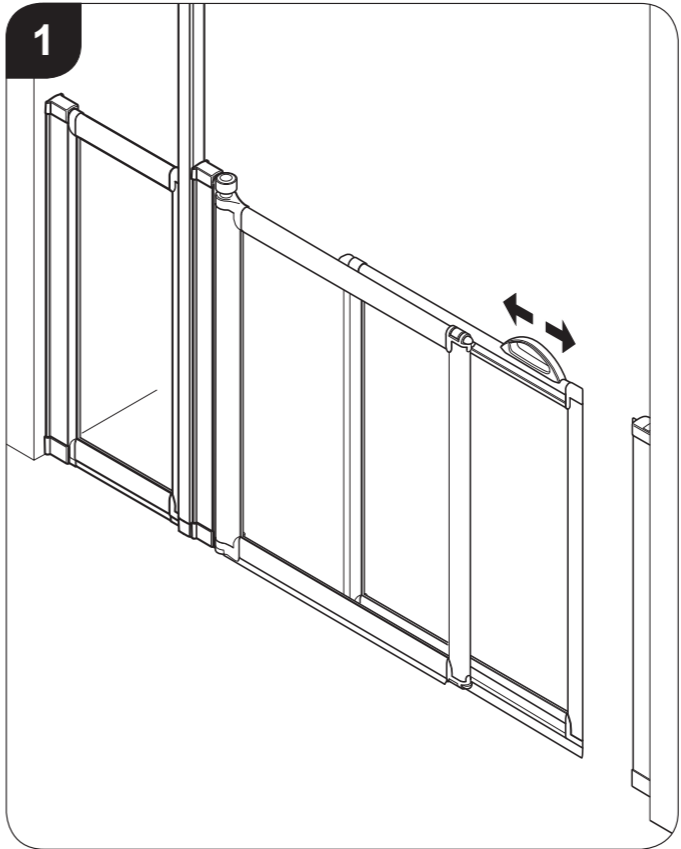


Contents

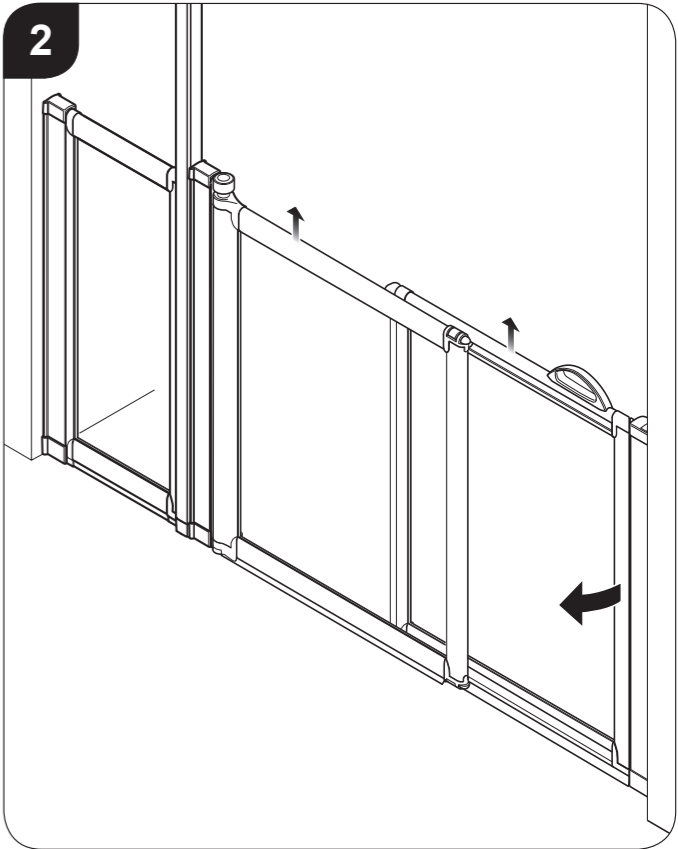
	Page
Safety	2
Door System Explained	3
<b>Section A - Fixed Panel and Floor to Rail Pole</b>	
Component Content List	4
Fixed Panel and Floor to Rail Pole	4 - 6
<b>Installing Doors</b>	
Component Content List	7
<b>Section B - Installing Door to Fixed Panel</b>	
Installing Door to Fixed Panel	8 - 9
<b>Section C - Corner Enclosure</b>	
Fitting Wall Channels - Corner Enclosure	10
Fitting Doors - Corner Enclosure	10 - 11
<b>Section D - Alcove Enclosure</b>	
Fitting Wall Channels - Alcove Enclosure	12
Fitting Doors - Alcove Enclosure	13 - 14
<b>Section E - Alcove Double Door Enclosure</b>	
Fitting Wall Channels - Alcove Enclosure	15
Fitting Doors - Alcove Enclosure	16
<b>Section F - Finishing &amp; Operating</b>	
Sealing	17
Operating Bi-Fold Doors	18
Operating Sliding Doors	19

Safety

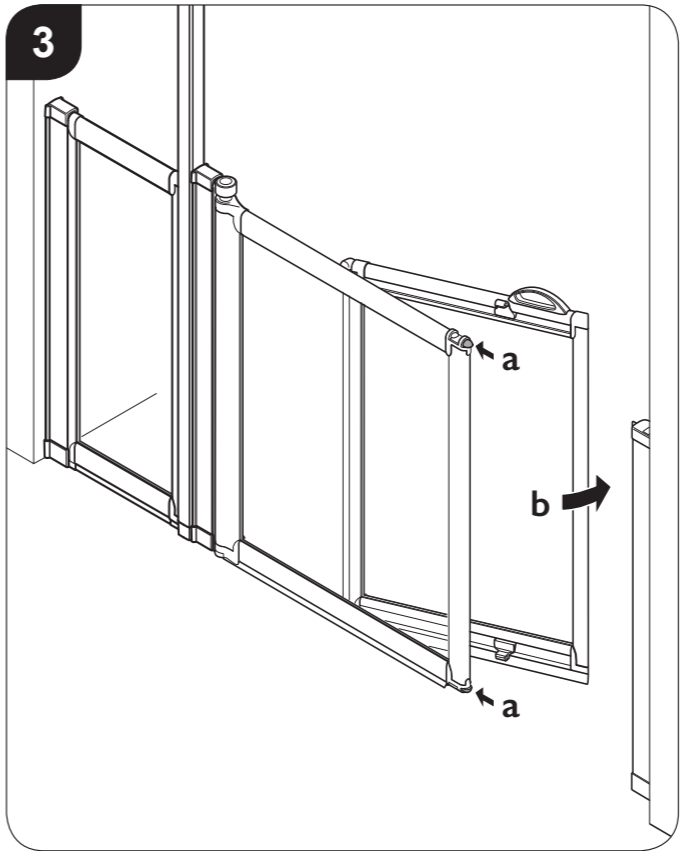
- **Please read these installation instructions carefully before proceeding.**
- This instruction is a general guide for installing the FreeGlide enclosures.
- Keep guide for future reference.
- If you are unsure about any part of the installation, please contact our Technical Department on: 01460 256080.
- Incorrect installation will invalidate the guarantee.
- Make sure there are no hidden pipes or cables in the floor or walls where you intend to drill.
- Fitting the Enclosure may need to be carried out by two people.
- Wear safety goggles, appropriate clothing and footwear.
- Handle with care.



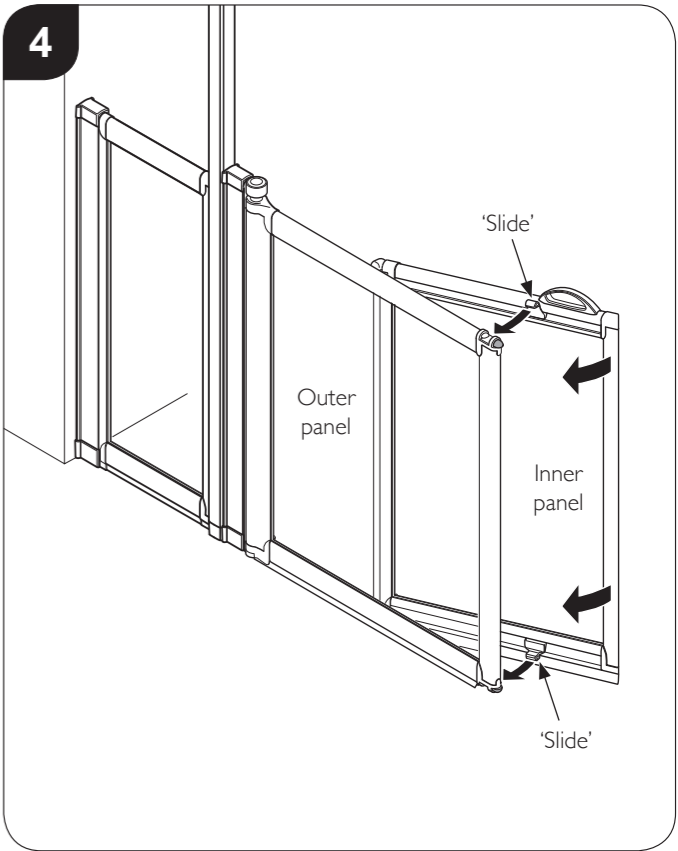
To operate the 'Sliding': Simply slide it open and slide it closed.



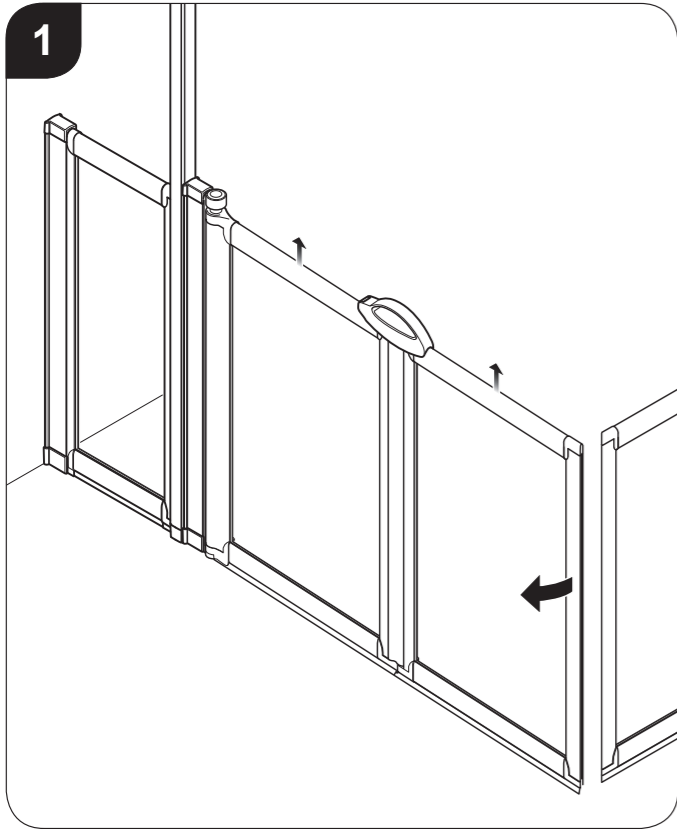
To open: Simply open the door and it will automatically lift clear from the floor.



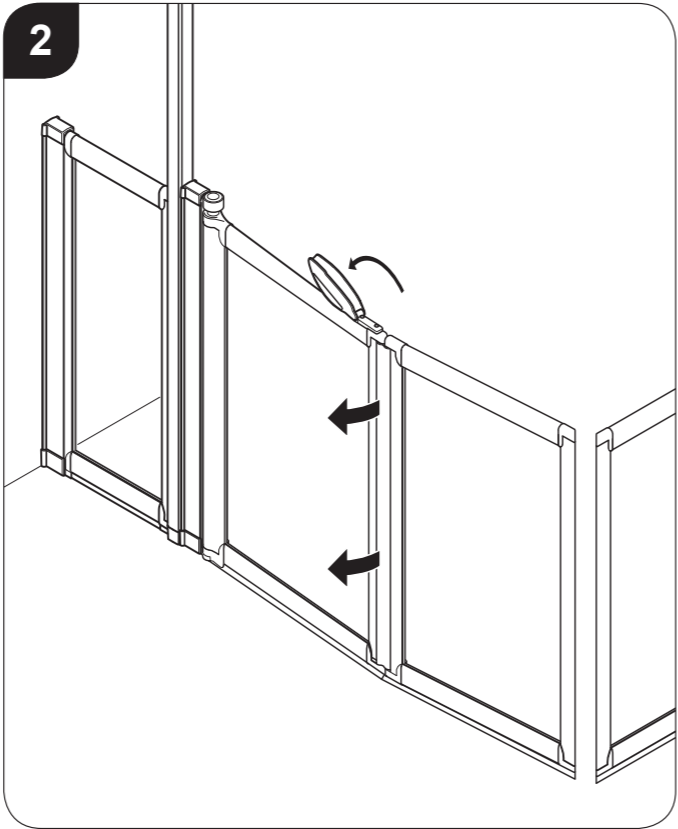
To separate doors for cleaning: Slide the door open, press both buttons (a) and 'pivot' the 2 door panels apart (b).



To reconnect the doors: 'Pivot' the inner panel back onto the outer panel. Carefully line up the top and bottom 'slides' on the inner panel with locking mouldings on the outer panel and 'click' together.

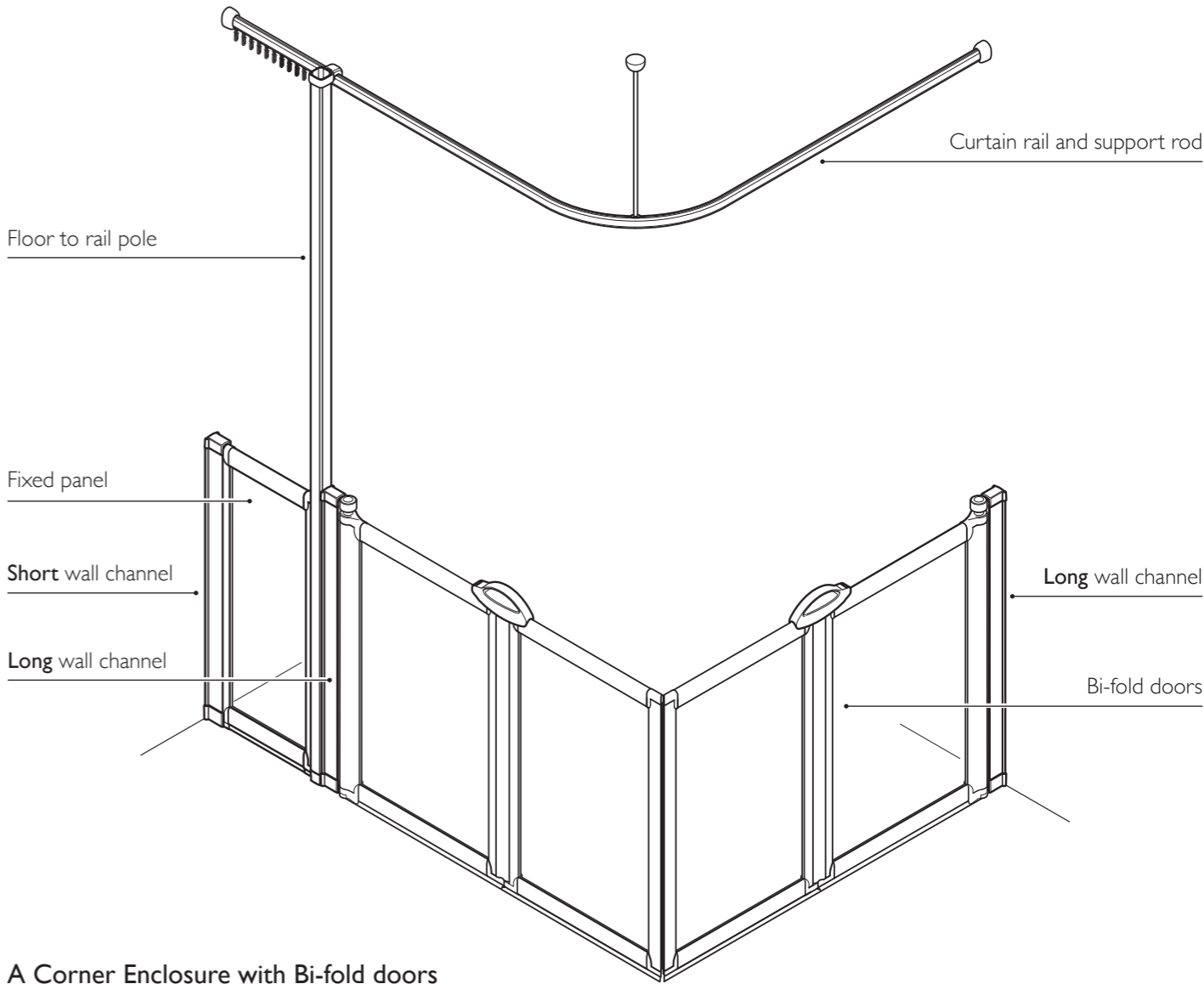


**To open:** Simply open the door and it will automatically lift clear from the floor.



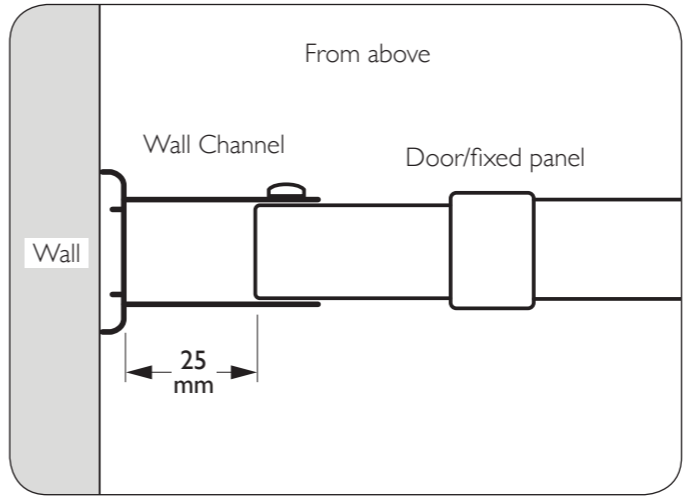
**To operate the 'Bi-fold':** Flip the 'Bi-fold handle' over and the door will 'pivot' in or out as required.

**To close:** Carry out the above procedure in the reverse order.



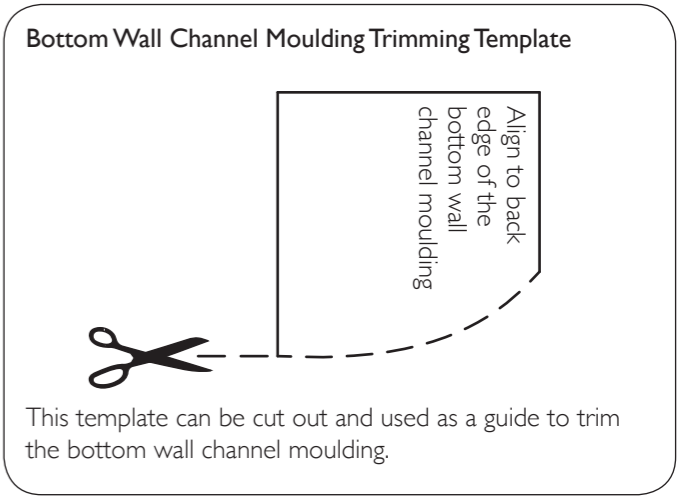
A Corner Enclosure with Bi-fold doors is shown as an example.

Wall Channel Adjustment Range



There is a maximum of 25mm of adjustment for the door/fixed panel within each wall channel.

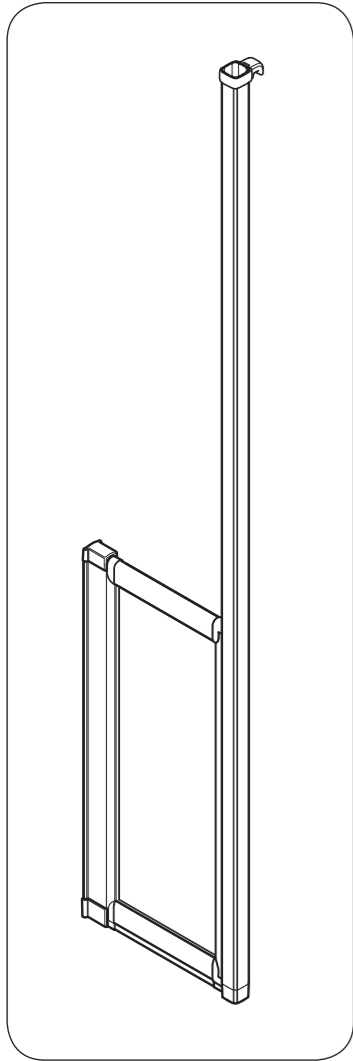
Coving Foot Trimming



This template can be cut out and used as a guide to trim the bottom wall channel moulding.

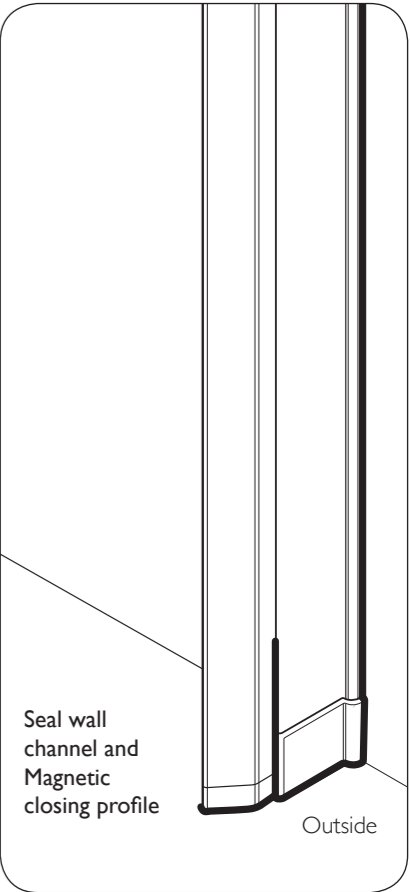
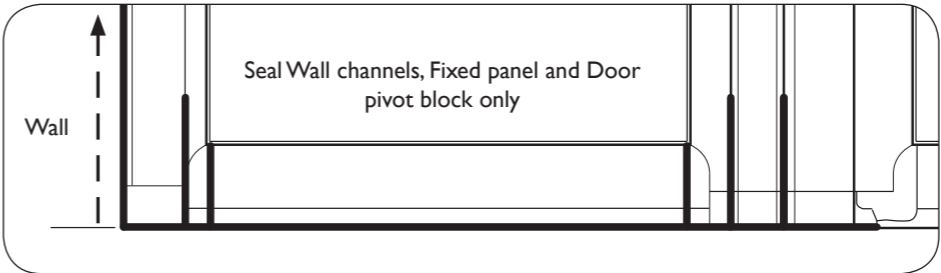
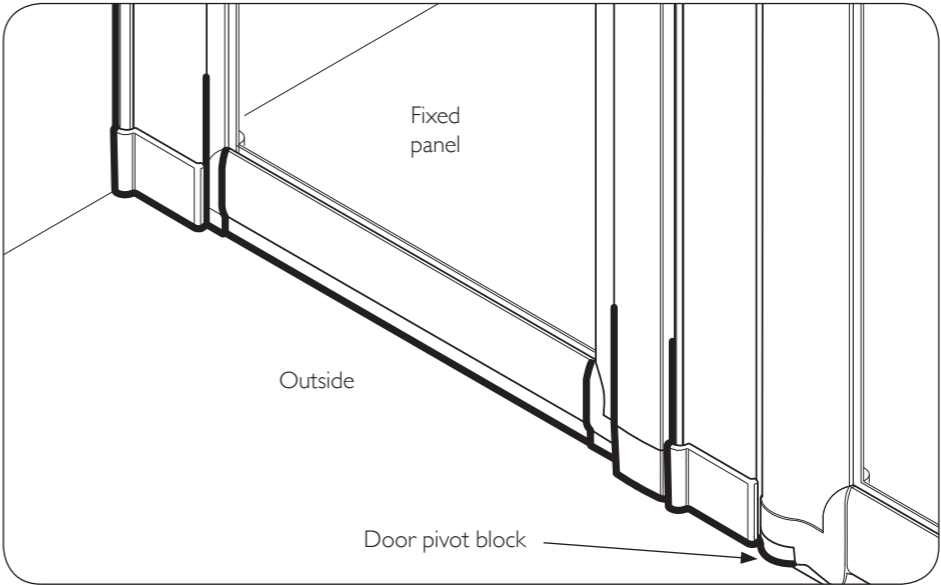
Cut out and use this template to trim the bottom wall channel mouldings when you have vinyl floors and wetrooms with radius edges.

Section A - Fixed Panel and Floor to Rail Pole  
Component Content List



	3222 x 3		50469 x 1
	3230 x 2		50470 x 1
	60528 x 1		50440 x 1
	8203 x 2		80709 x 1
	50539 x 2		50442 x 1
	60066 x 1		60537 x 1
	8212 x 2		60538 x 1
	4745 x 1		
	4748 x 3		
	60538 x 1		

Fixed Panels & Magnetic Closing Profile Only  
Sealing



From the outside only, apply silicone sealant to the bottom of the Fixed panel, wall channels, door pivot block and the magnetic closing profile. Also seal 50mm up the vertical joints and all of the way up the wall/wall channels (to the underside of the top caps) as shown.

**Important:** You must not use the enclosure for 24 hours after installation.  
**Do not** use bleach, scouring powders, solvents or aggressive cleaning agents. To clean, use warm soapy water, a clean cloth and rinse off.

1

For coved vinyl floors

For shower tray/tiled floors

50470

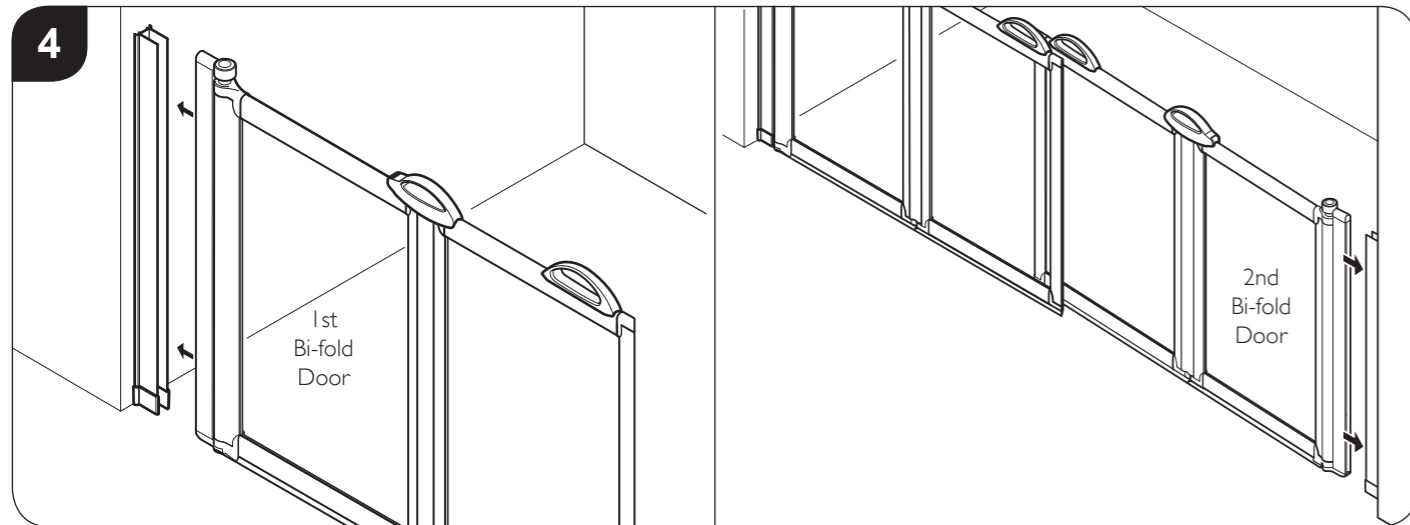
Important:

The bottom wall channel moulding must fit onto the end shown.

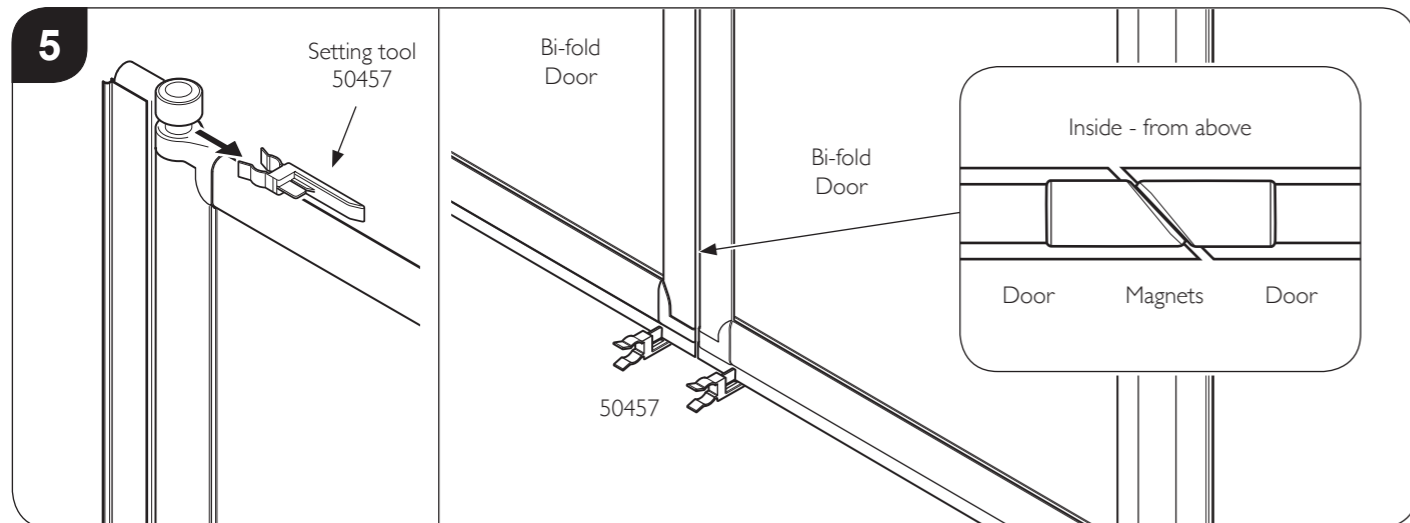
Bottom

In a coved wetroom installation the 'bottom wall channel moulding' must be trimmed to match the floor 'coving profile' (radius). Cut out the template on page 3 and use along with an appropriate tool to trim as shown.  
Push fit the bottom wall channel moulding (50470) onto the bottom of the short wall channel. Take note the hole positions in the wall channels.

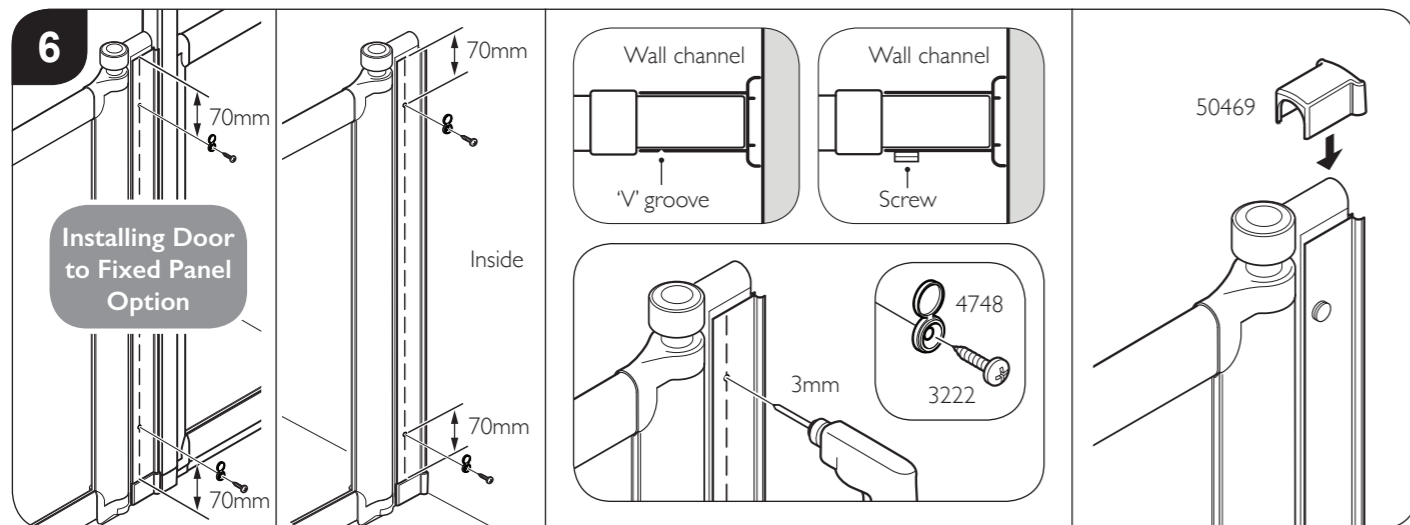
## Section E Alcove Double Door Enclosure - Fitting Doors



Fully insert the Doors into the wall channels.

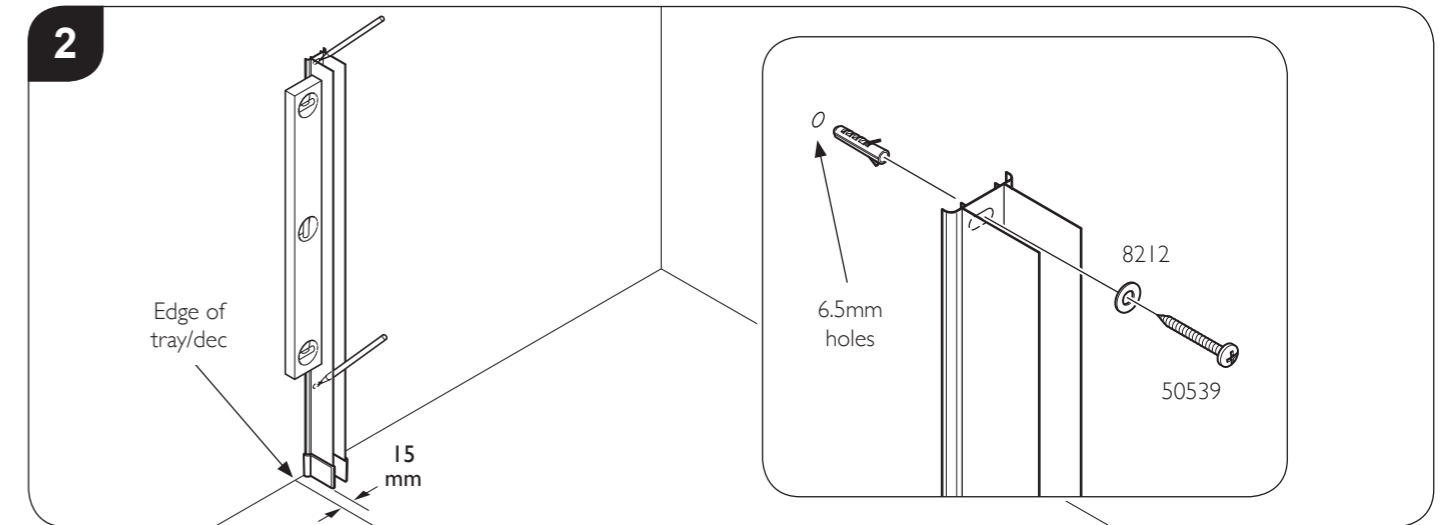


**To level the doors:** Using the setting tools, set the height of the doors ensuring the magnets line up down the full length of the doors. Insert a setting tool under the seal at the end of each door. Allow the doors to rest on the door setting tools as shown above, this ensures the doors are correctly height adjusted. Ensure the doors are centralised in-between the wall channels. **Note:** The setting tool is supplied clipped onto the door pivot.

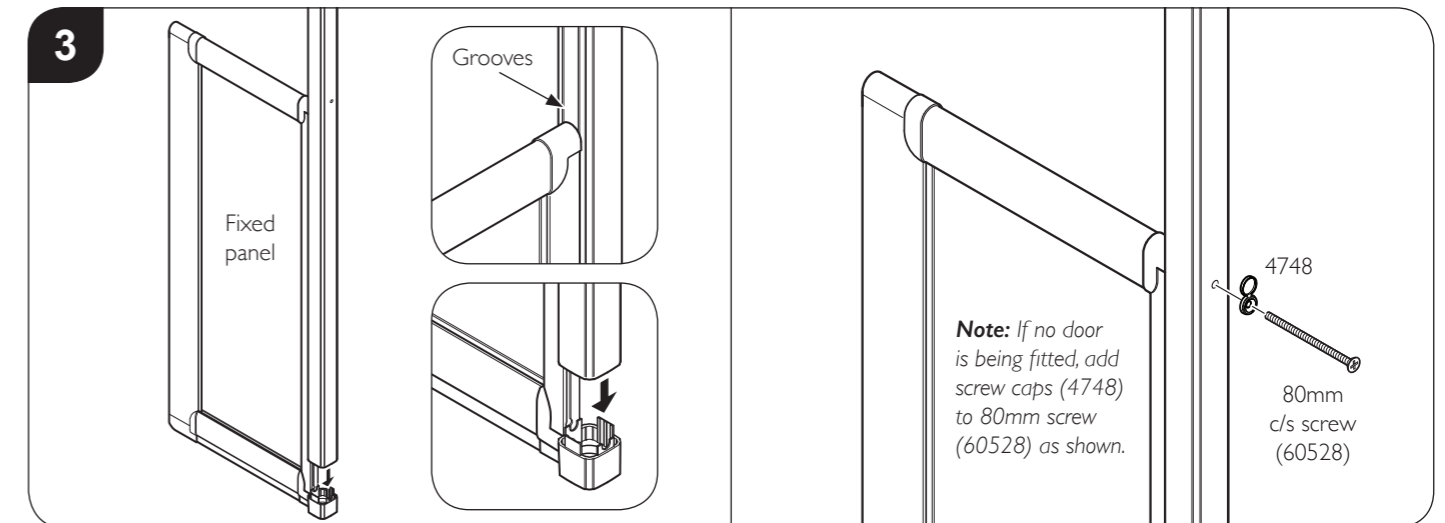


**With the Doors level and centralised between wall channels:** On the inside of the door (on the 'V' groove line marked on the wall channel), drill 2x 3mm holes through the wall channel into the door, 70mm down from the top and up from the bottom of the wall channel as shown. Fix using 2x 10mm screws (3222) and covers caps (4748). Repeat with other door. Fit Top caps (50469) to top of wall channels. Remove setting tools from under the doors.

## Section A Fixed Panel and Floor to Rail Pole

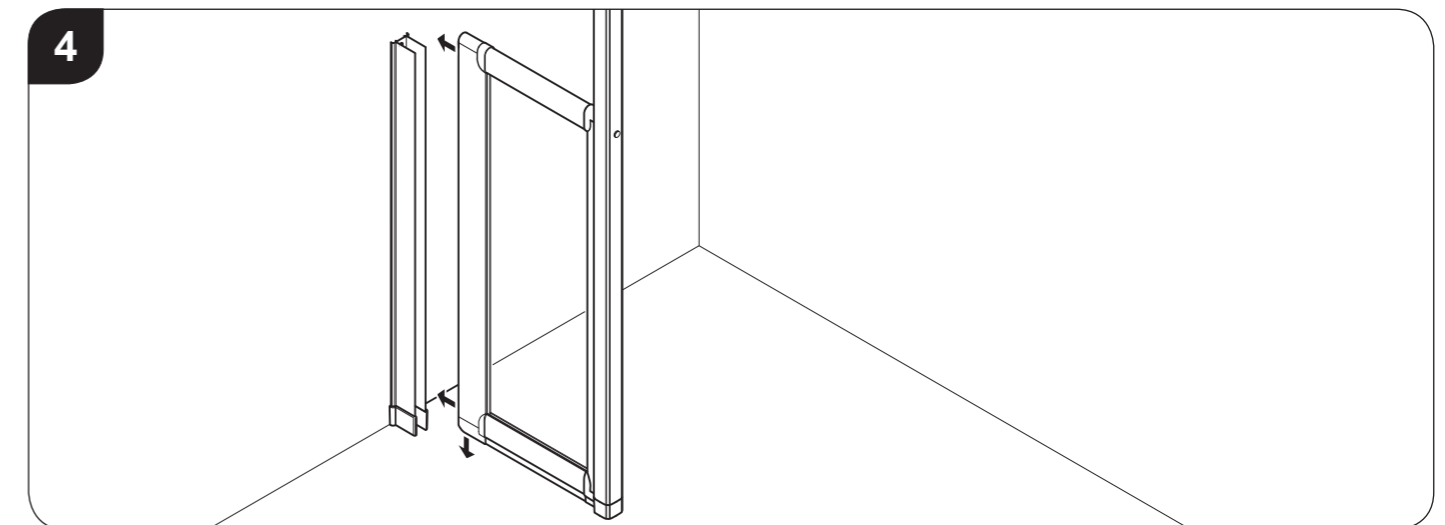


Position the wall channels 15mm in from the edge of the tray/dec as shown. Ensure wall channel is vertical and mark both hole positions onto the wall. Drill wall using a 6.5mm drill bit and insert wall plugs (3230). Fix wall channel to the wall using 2x washers (8212) and 50mm screws (50539). **Do not overtighten screws.**



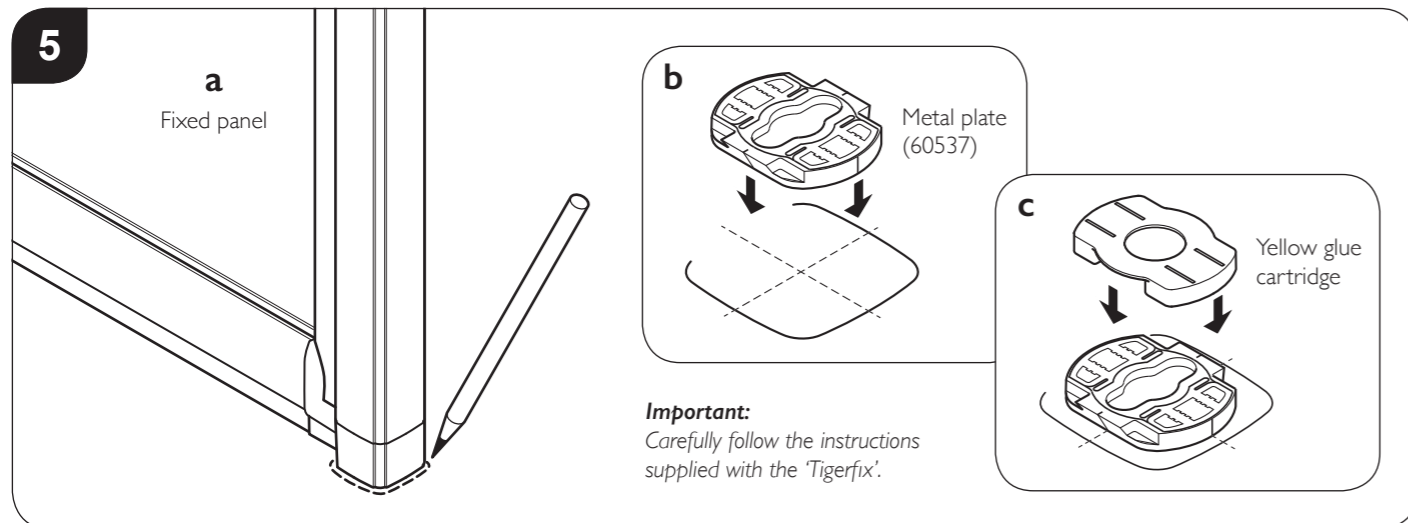
Fit the floor to rail pole into the bottom moulding attached to the fixed panel.

**Note:** The grooves on the pole **MUST** locate onto the end of the fixed panel. Make sure the pole is pushed all the way down onto the bottom moulding. Screw through the pole into the fixed panel using the 4x 80mm c/s screw.



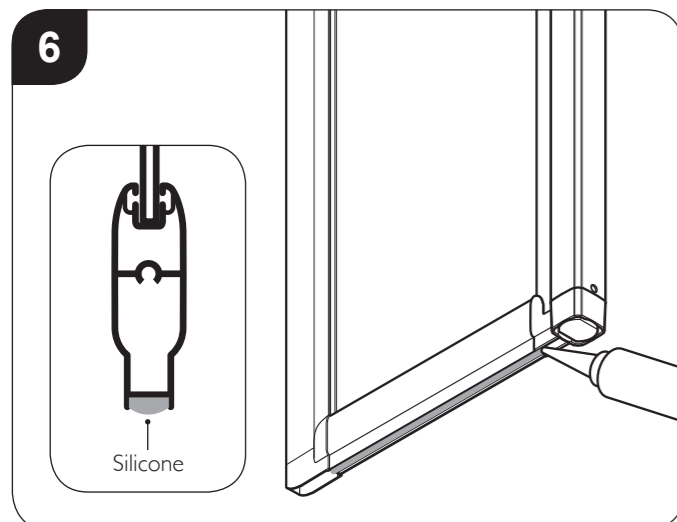
Fully insert the fixed panel into the **short** wall channel, push down on the panel to ensure it is fully down.

## Section A Fixed Panel and Floor to Rail Pole

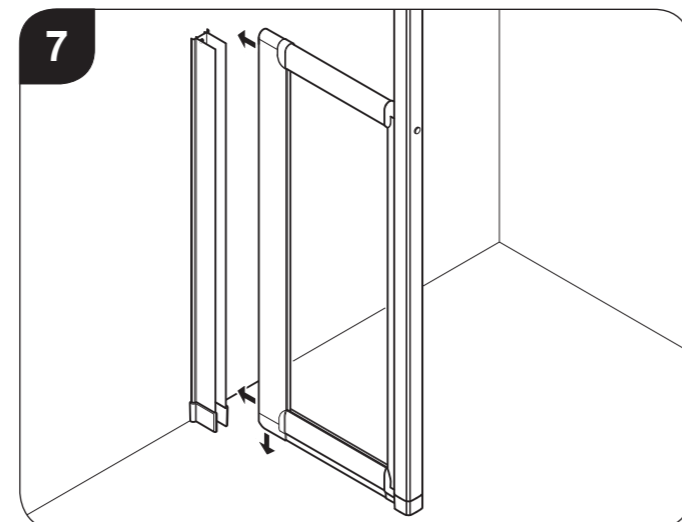


**Fit 'Tigerfix' to the floor:** a: With the floor clean and the fixed panel in its final position, draw a line around the fixed panel moulding and remove the panel.

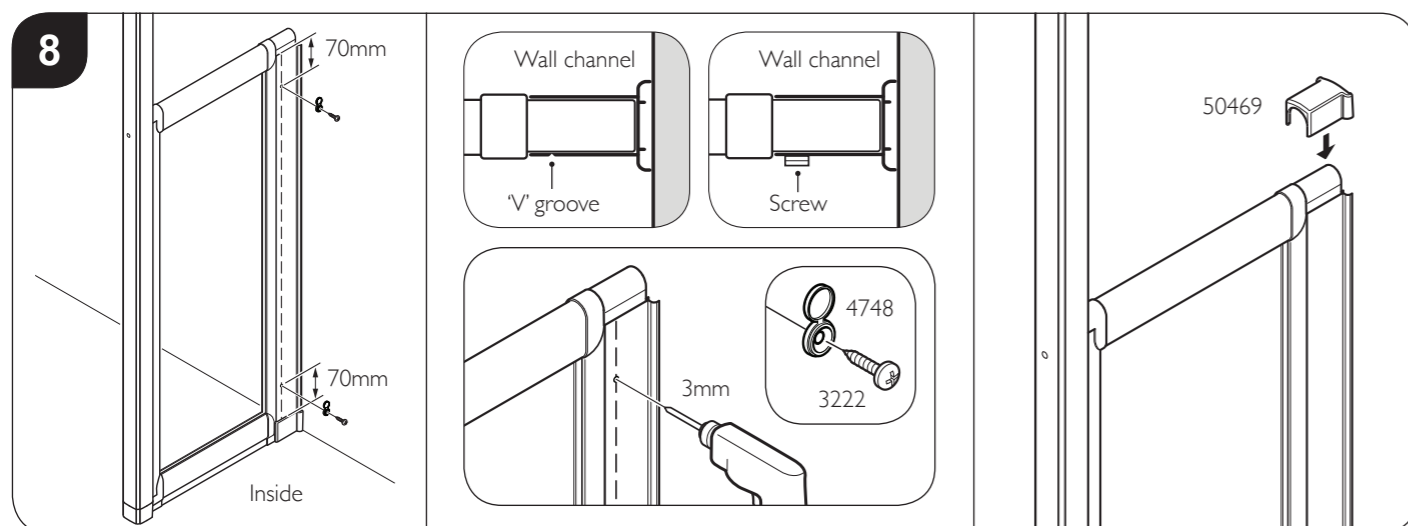
b: Peel the backing off the back of the 'Tigerfix' metal plate and position in the centre of the marked area. c: Insert the yellow plastic glue cartridge into the metal plate and push down fully.



Before re-inserting the fixed panel into the wall channel, apply silicone along the recess in the bottom of the fixed panel.

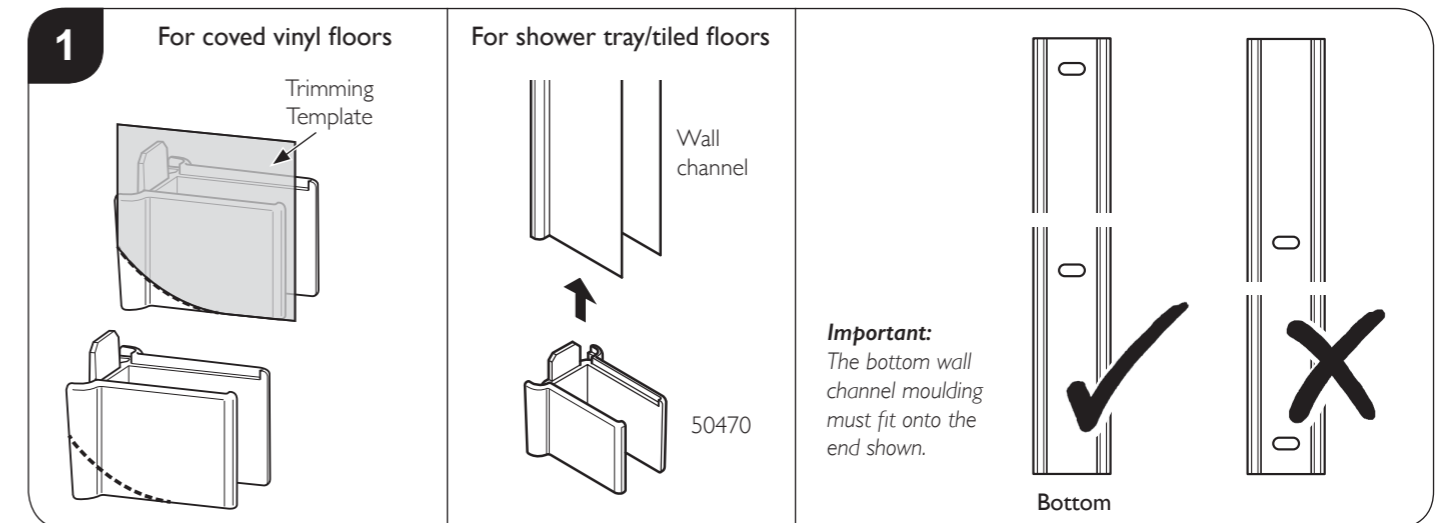


Fully insert fixed panel into wall channel. Ensure the 'Tigerfix' is positioned under the fixed panel moulding and push down on fixed panel to ensure it is fully down. Wipe away any excess silicone from bottom of panel.

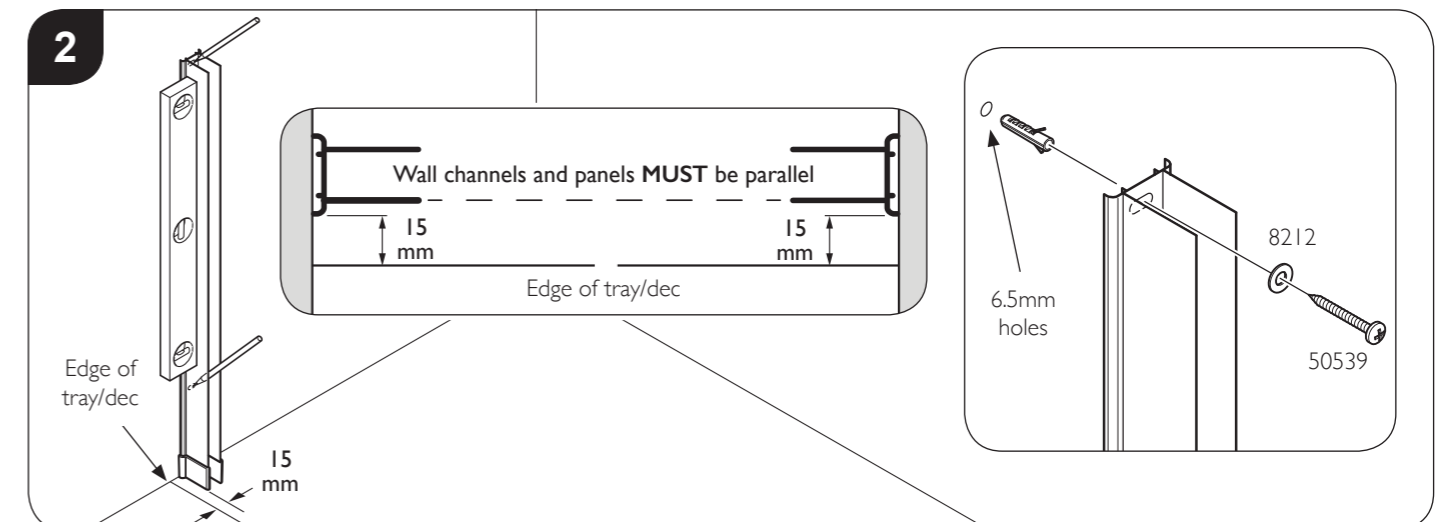


On the inside of fixed panel (in the 'V' groove line marked on the wall channel), drill 2x 3mm holes through the wall channel into the fixed panel, 70mm down from the top and up from the bottom of the wall channel as shown. Fix using 2x 10mm screws (3222) and covers caps (4748). Fit top cap (50469) to top of wall channel.

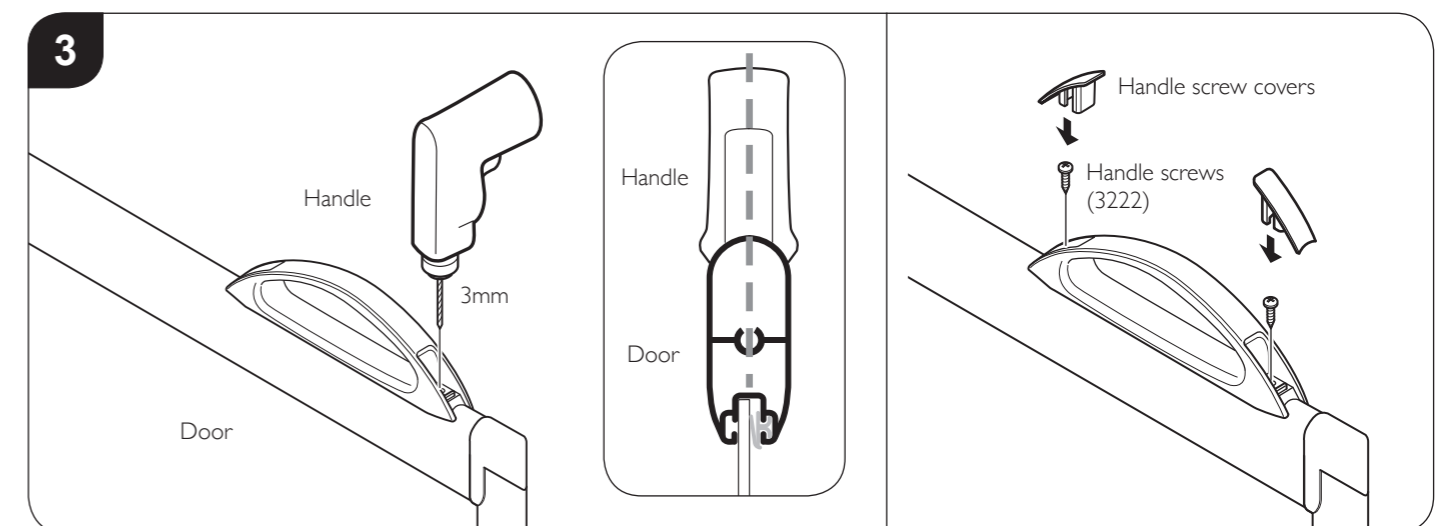
## Section E Alcove Double Door Enclosure - Fitting Wall Channels



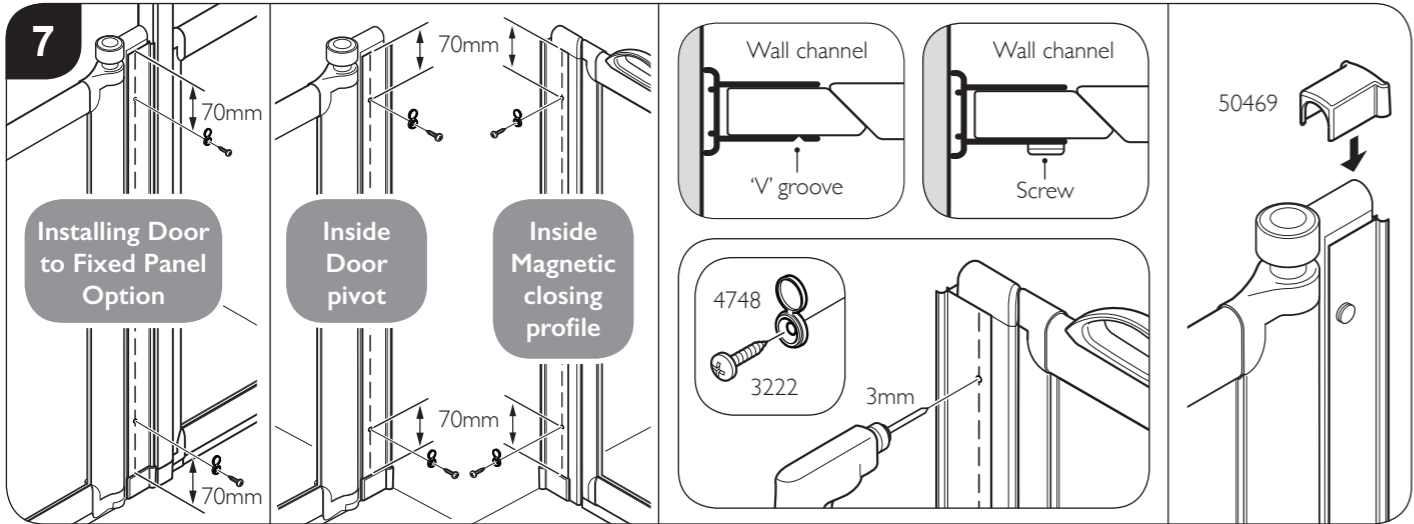
In a coved wetroom installation the 'bottom wall channel moulding' must be trimmed to match the floor 'coving profile' (radius). Cut out the template on page 3 and use along with an appropriate tool to trim as shown. Push fit the bottom wall channel mouldings (50470) onto the bottom of the long wall channels. Take note the hole positions in the wall channels.



Position the wall channels 15mm in from the edge of the tray/dec as shown. Ensure wall channels are vertical and parallel (if fixed panels are used, they must also be parallel), mark both hole positions onto the walls. Remove the wall channels and drill wall using a 6.5mm drill bit and insert wall plugs (3230). Fix wall channels to the walls using 2x washers (8212) and 50mm screws (50539). **Do not overtighten screws.**



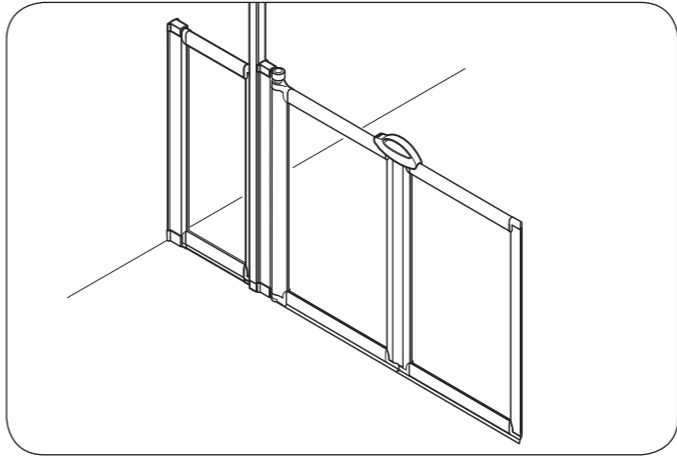
**Fitting Optional Door Handles:** Position the door handle/s vertically near the front (magnetic closer end) of the door/s. Mark and drill the fixing holes using a 3mm drill bit. Attach using the 10mm screws (3222) and push fit handle screw covers.



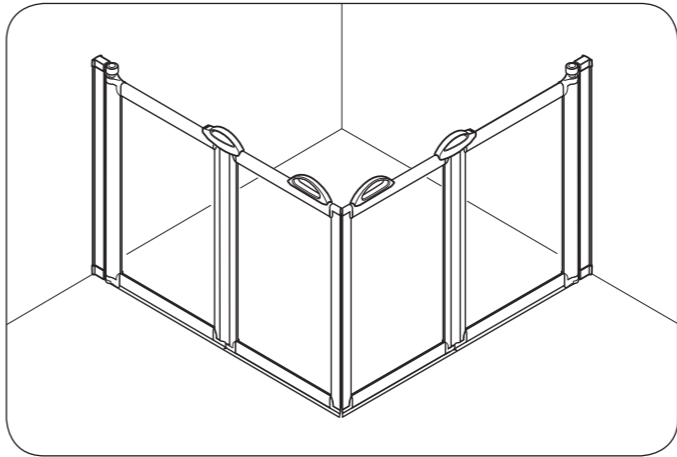
With the Door level and centralised between wall channels: On the inside of the Door and magnetic closing profile (on the 'V' groove line marked on the wall channels), drill 2x 3mm holes through the wall channels into the Door and Magnetic closing profile. The holes should be 70mm down from the top and up from the bottom of the wall channel as shown. Fix using 2x 10mm screws (3222) and covers caps (4748). Remove setting tool from under the doors. Fit Top caps (50469) to top of wall channels.

Note: This screwpack is per door, multiple doors will have multiple screwpacks.

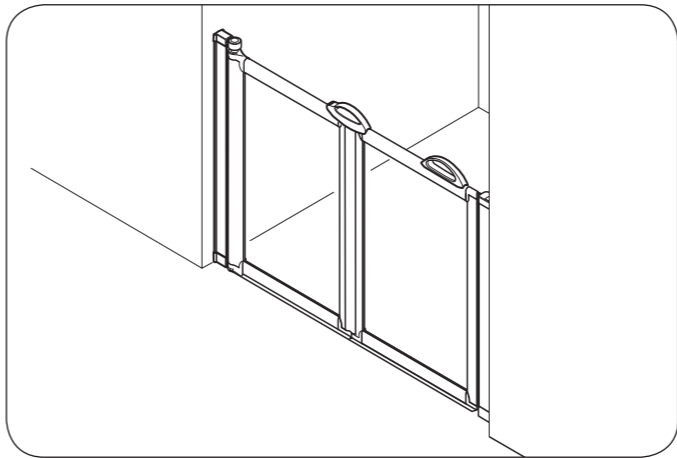
Section B - Installing Door to Fixed Panel  
Pages: 8 - 9



Section C - Fitting Corner Enclosure  
Pages: 10 - 11

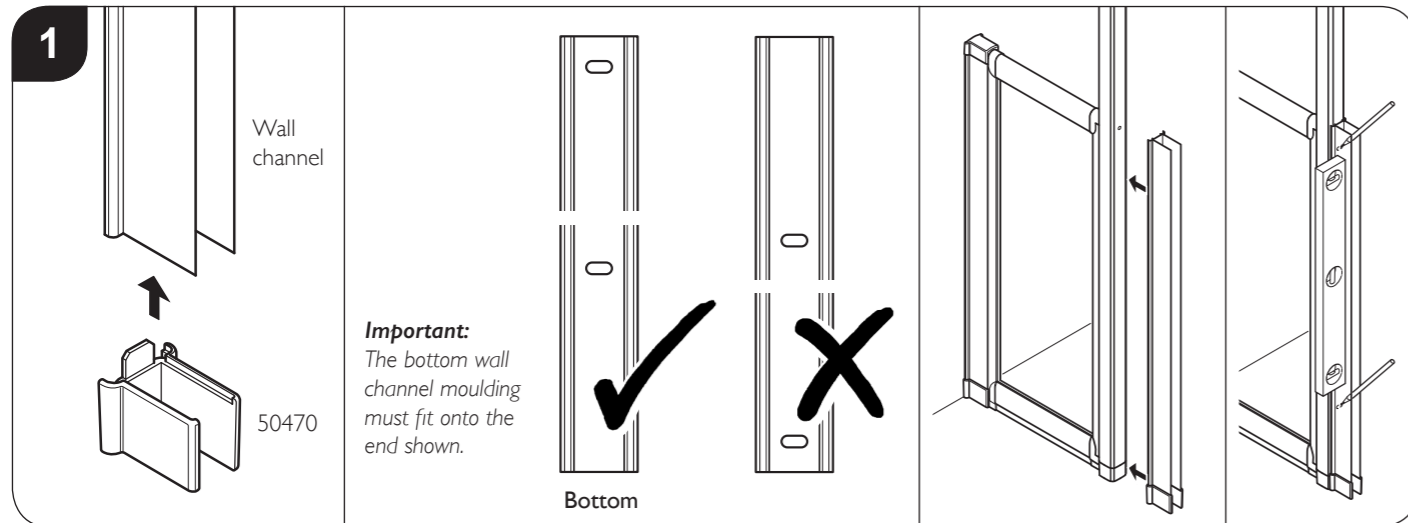


Section D & E - Fitting Alcove Enclosures  
Pages: 12 - 14 & 15 - 16

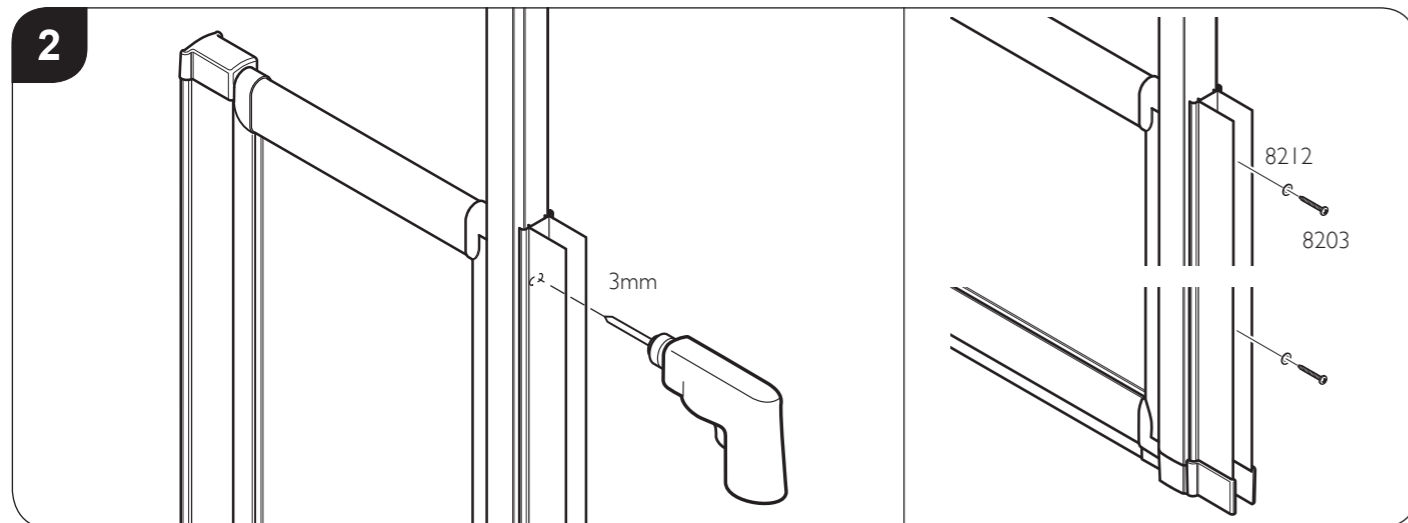


- 3222 x 2
- 3230 x 2
- 8203 x 2  
only required if fixed panel used
- 50539 x 2
- 8212 x 2
- 4748 x 2
- 50457 x 1  
Supplied fitted to door pivot
- 50469 x 1
- 50470 x 1
- 3222 x 2  
Handle screws
- 50466 x 2
- 50465 x 1
- 60538 x 1

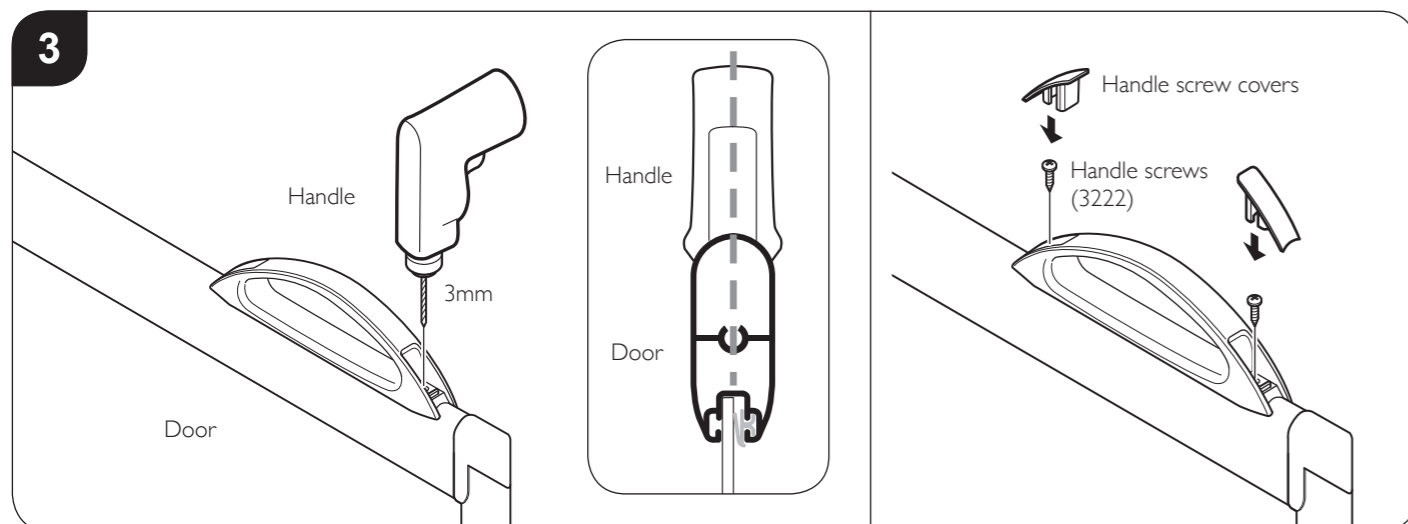
## Section B Installing Door to Fixed Panel



Push fit bottom wall channel moulding onto the bottom of the **long** wall channel. Ensure the wall channel is vertical and mark both fixing holes onto the pole.

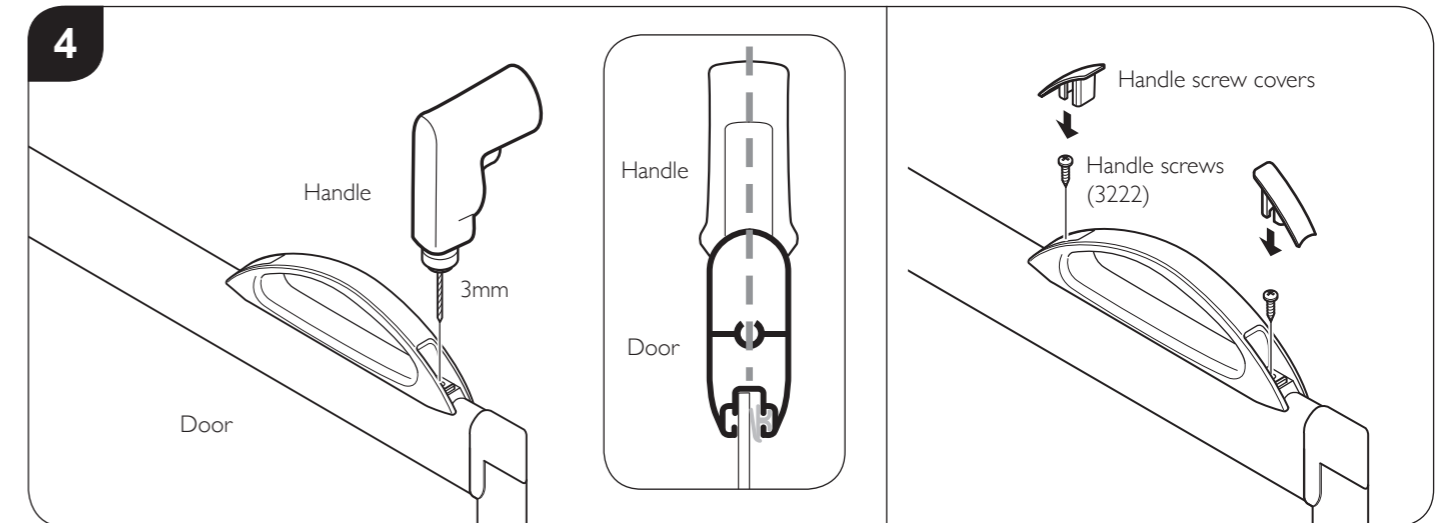


Drill 2x 3mm holes through the Wall channel into the Floor to rail pole. Fix the wall channel to Fixed pole using 2x 32mm screws (8203) and washers (8212). **Do not overtighten screws.**

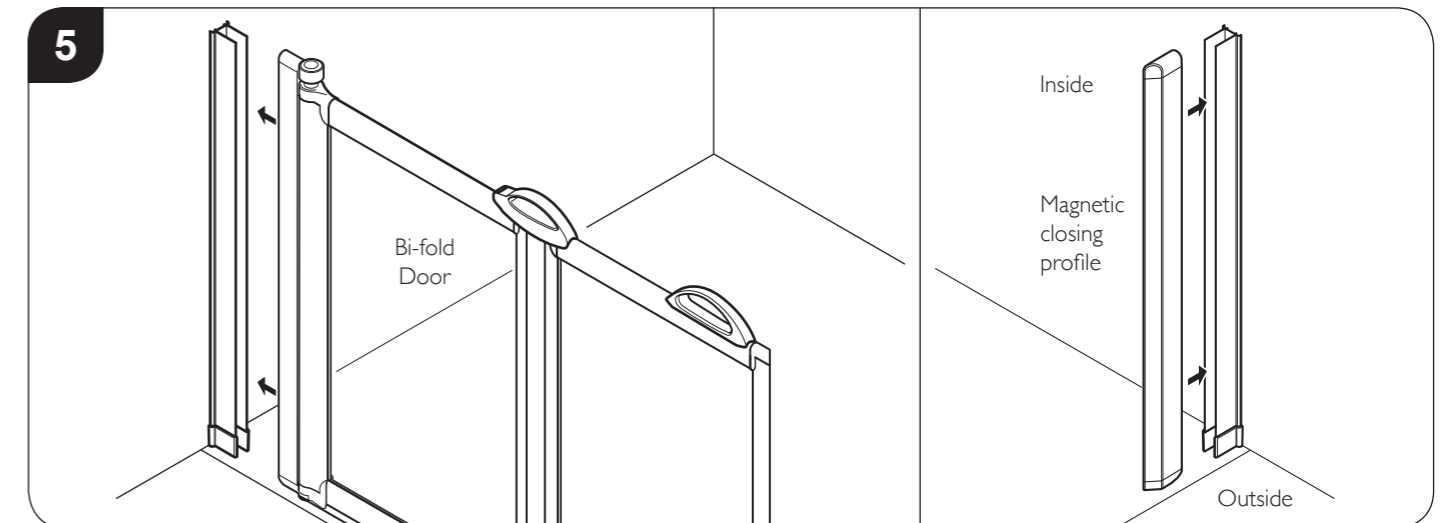


**Fitting Optional Door Handle:** Position the door handle/s vertically near the front (magnetic closer end) of the door/s. Mark and drill the fixing holes using a 3mm drill bit. Attach using the 10mm screws (3222) and push fit handle screw covers.

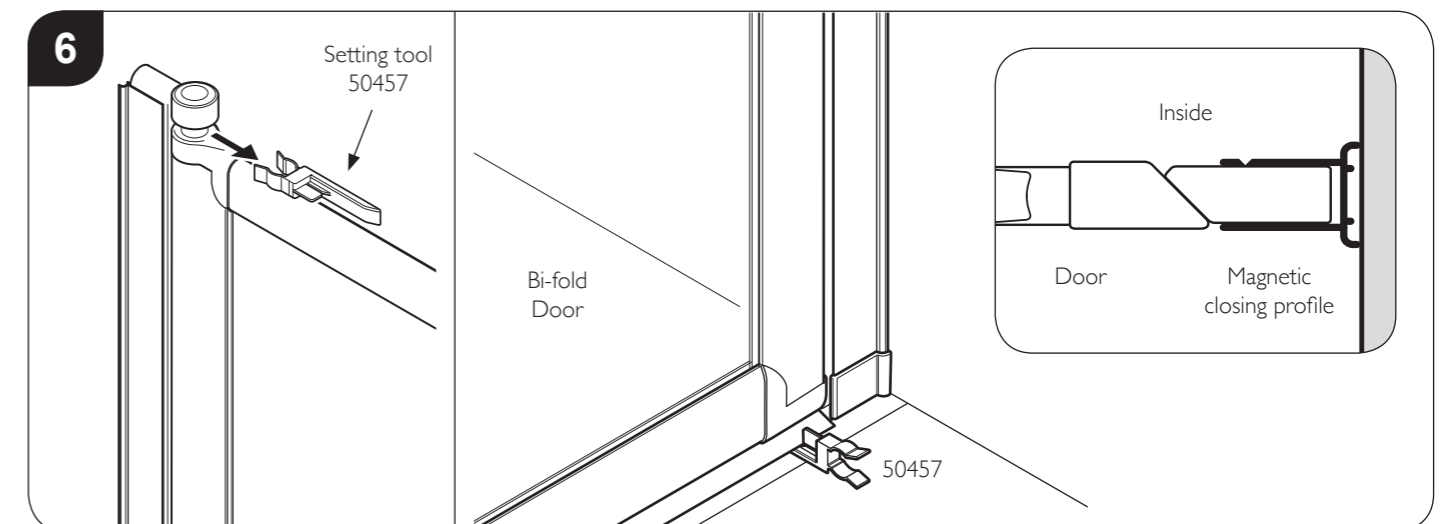
## Section D Alcove Enclosure - Fitting Doors



**Fitting Optional Door Handle:** Position the door handle/s vertically near the front (magnetic closer end) of the door/s. Mark and drill the fixing holes using a 3mm drill bit. Attach using the 10mm screws (3222) and push fit handle screw covers.



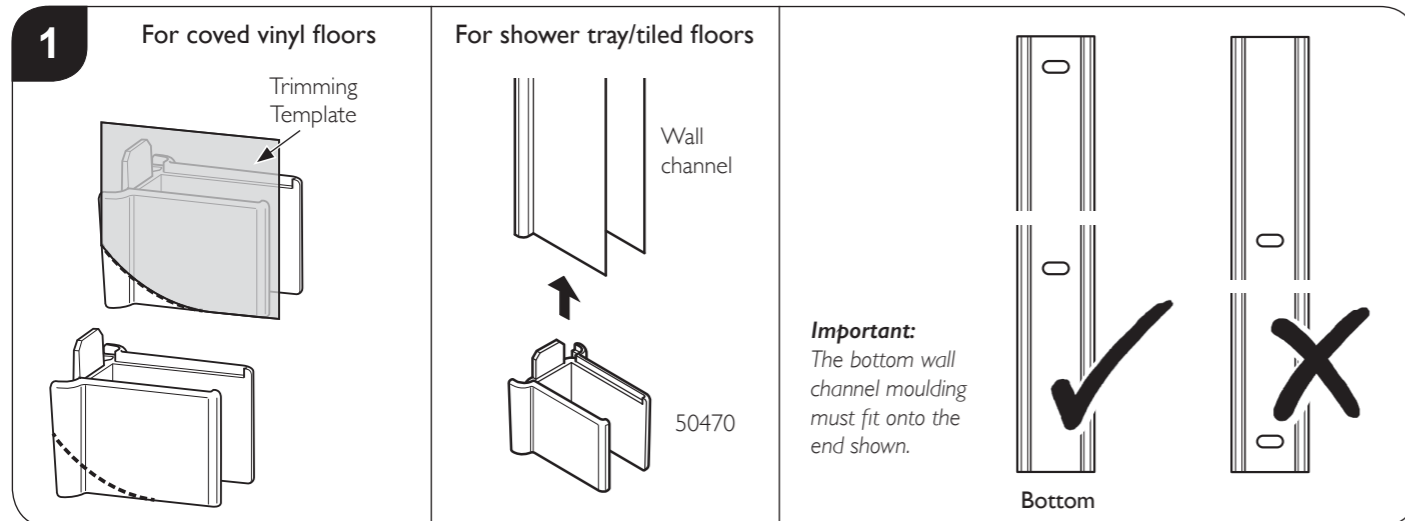
Fully insert the Door into the **long** wall channel and the magnetic closing profile into the **short** wall channel (Bi-fold door shown as example).



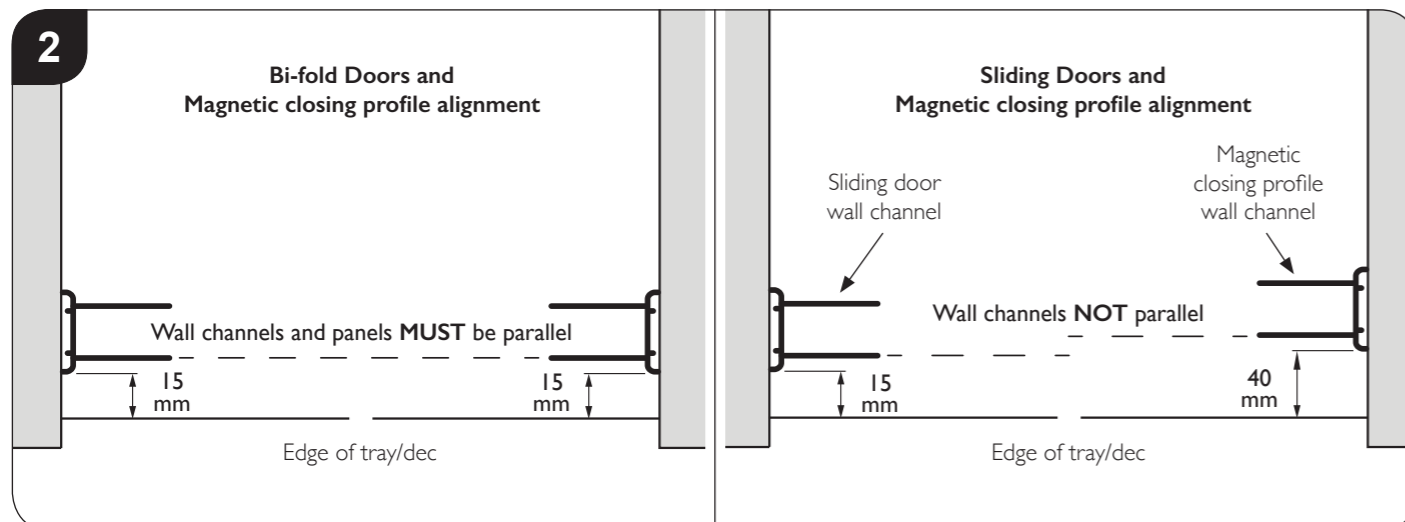
**To level the door:** Using the setting tool, set the height of the door ensuring the magnets line up down the full length of the door and magnetic closing profile. Insert the setting tool under the seal at the end of the door. Allow the door to rest on the door setting tool as shown above, this ensures the door is correctly height adjusted. Ensure the door/magnetic closing profile are centralised in-between the wall channels.

**Note:** The setting tool is supplied clipped onto the door pivot.

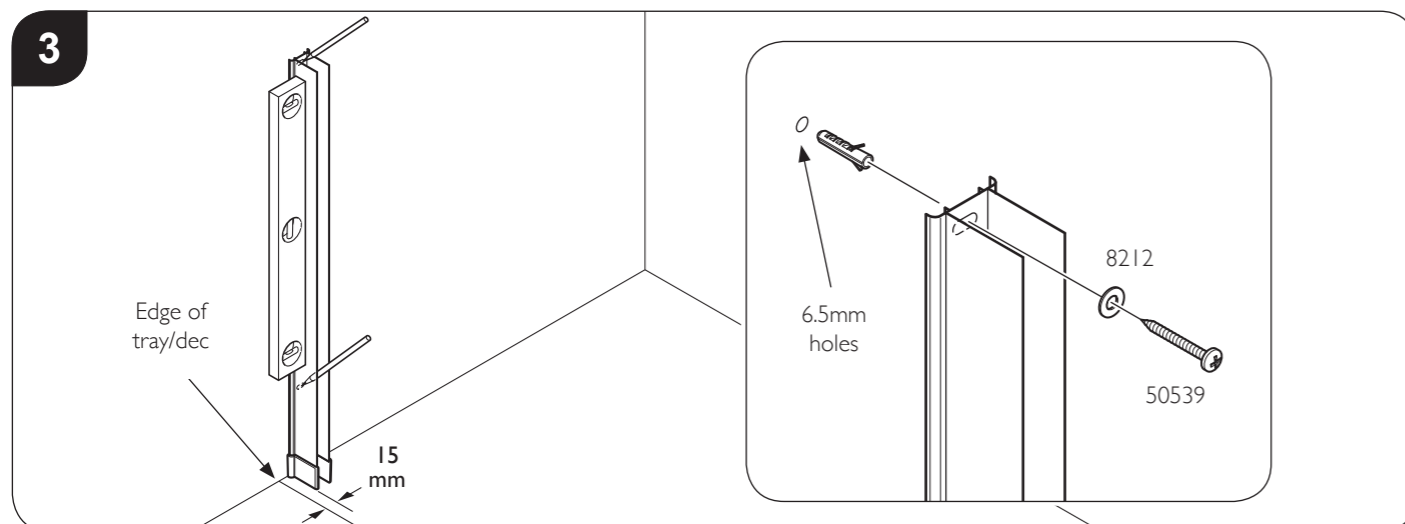
## Section D Alcove Enclosure - Fitting Wall Channels



In a coved wetroom installation the 'bottom wall channel moulding' must be trimmed to match the floor 'coving profile' (radius). Cut out the template on page 3 and use along with an appropriate tool to trim as shown. Push fit the bottom wall channel mouldings (50470) onto the bottom of the **long** and **short** wall channels. Take note the hole positions in the wall channels.

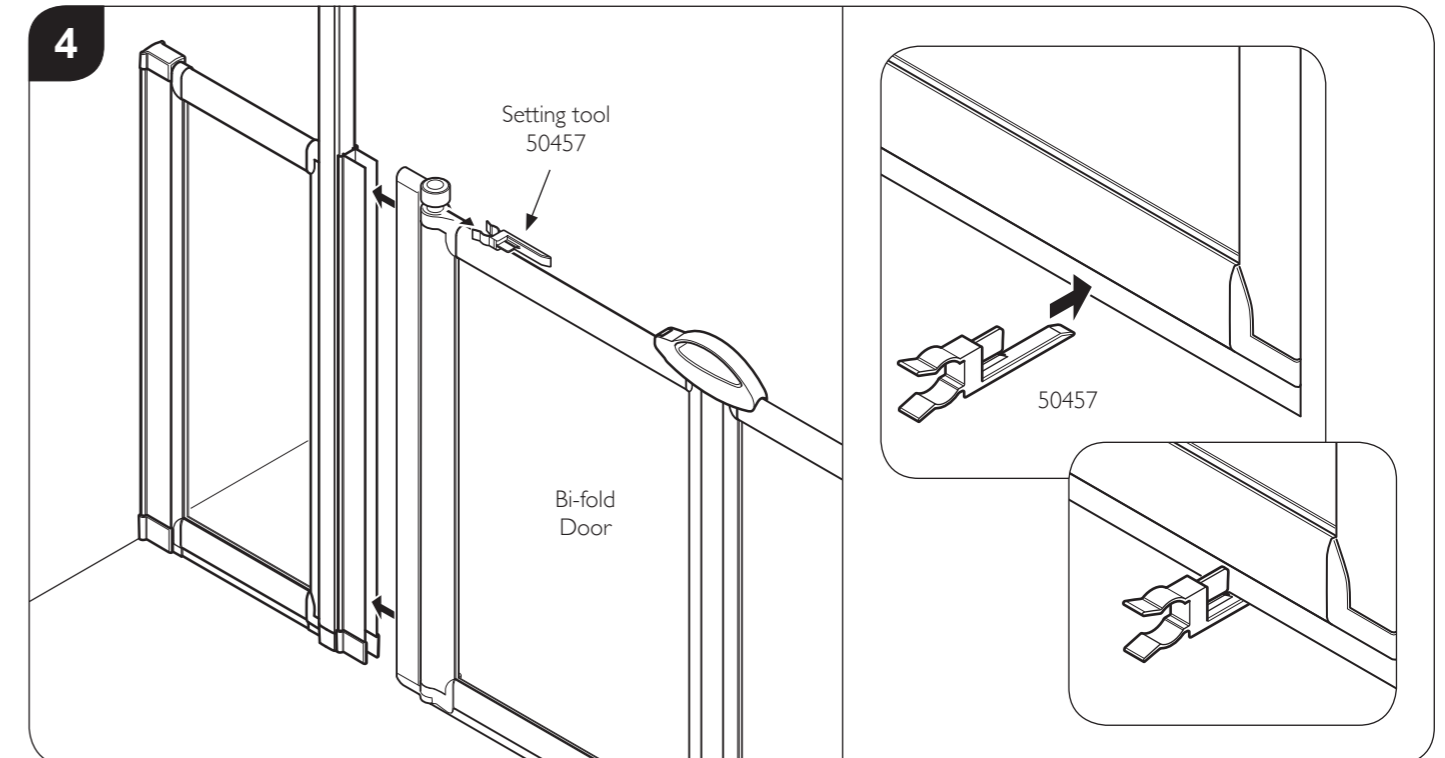


**Positioning the wall channels: Bi-fold Doors:** Both wall channels **MUST** be parallel with each other and set back 15mm from the edge of the tray/dec as shown above. **Sliding Doors:** The Door **long** wall channel should be set back 15mm and the Magnetic closing profile **short** wall channel should be set back 40mm from the edge of the tray/dec as shown above.



**Position the wall channels as shown in step 2.** Ensure wall channels are vertical (if fixed panels are used, they must be parallel with the door) and mark both hole positions onto the walls. Remove the wall channels and drill wall using a 6.5mm drill bit and insert wall plugs (3230). Fix wall channels to the walls using 2x washers (8212) and 50mm screws (50539). **Do not overtighten screws.**

## Section B Installing Door to Fixed Panel

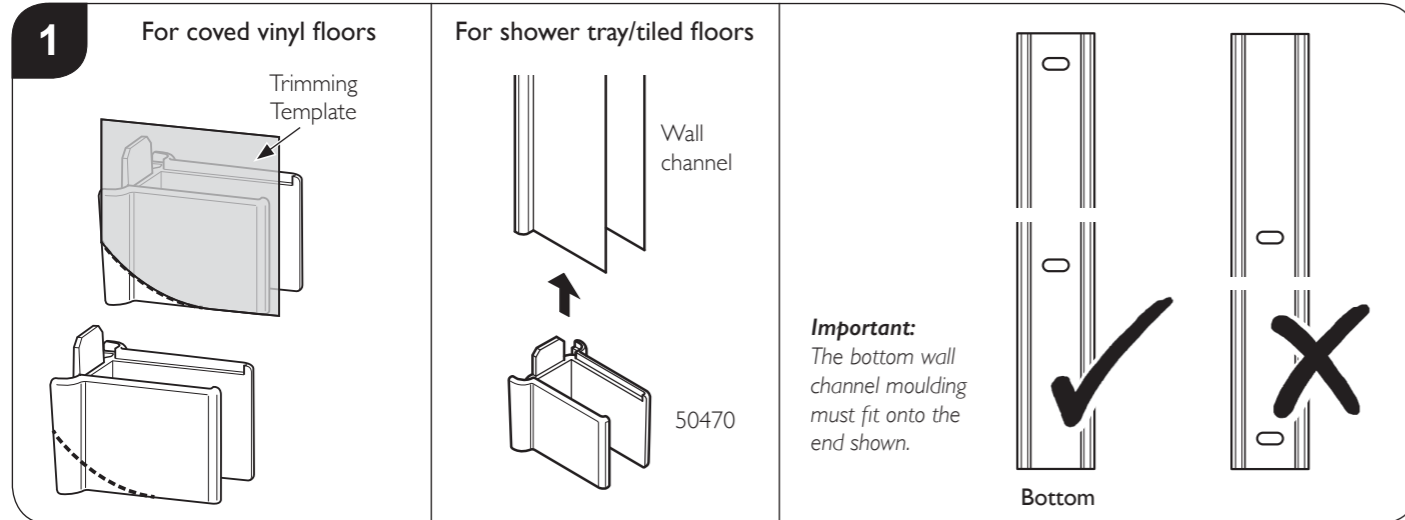


Fully insert the Door into the **long** wall channel (Bi-fold door shown as example).

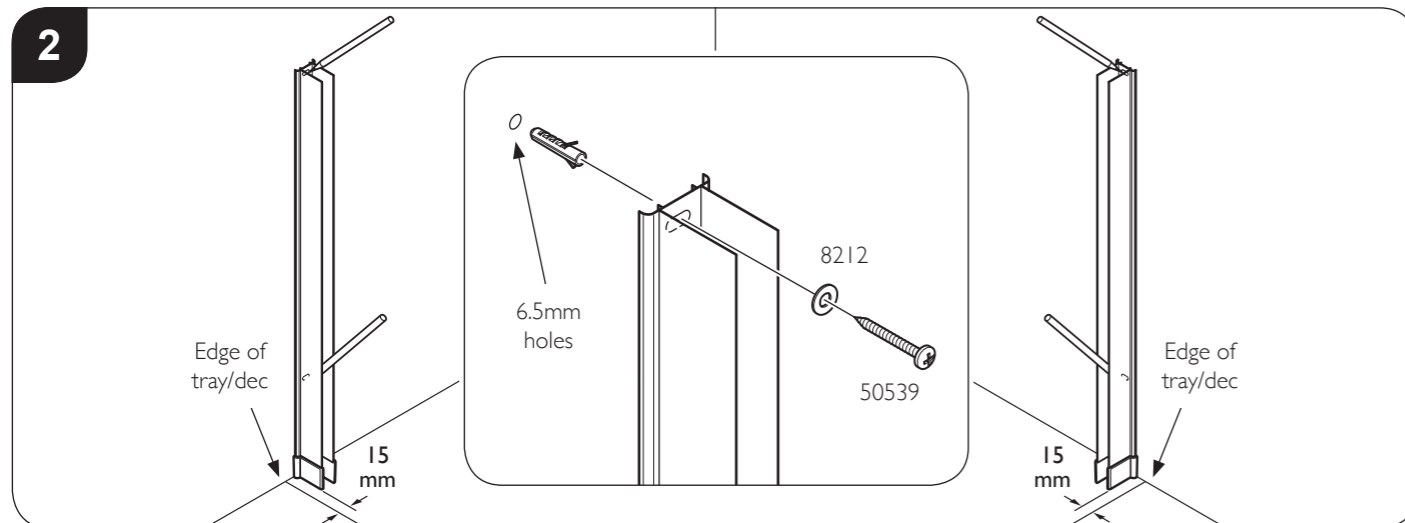
**To level the door:** At the closing end of the door, insert the setting tool under the door. Allow the doors to rest on the door setting tools as shown above, this ensures the doors are correctly height adjusted. **Note:** The setting tool is supplied clipped onto the door pivot.

If installing a **Corner Enclosure** now proceed to page 10 and follow steps 1 - 6 to finish.  
If installing an **Alcove Enclosure** now proceed to page 12 and follow steps 1 - 7 to finish.

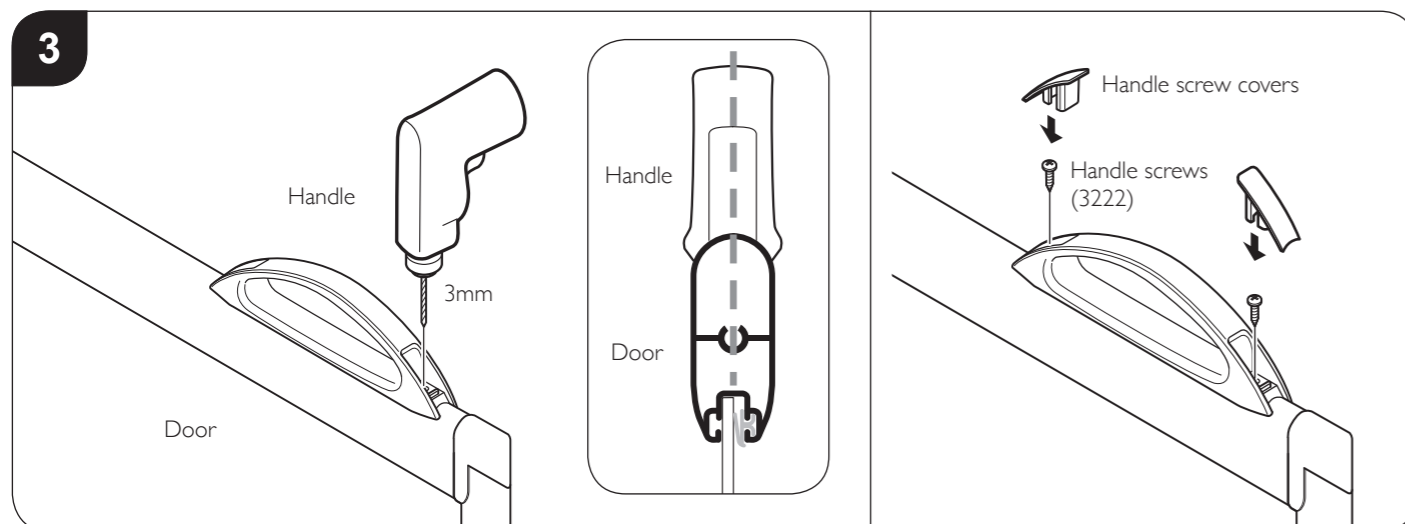
## Section C Corner Enclosure - Fitting Wall Channels



In a coved wetroom installation the 'bottom wall channel moulding' must be trimmed to match the floor 'coving profile' (radius). Cut out the template on page 3 and use along with an appropriate tool to trim as shown. Push fit the bottom wall channel moulding (50470) onto the bottom of the **long** wall channel. Take note the hole positions in the wall channels.

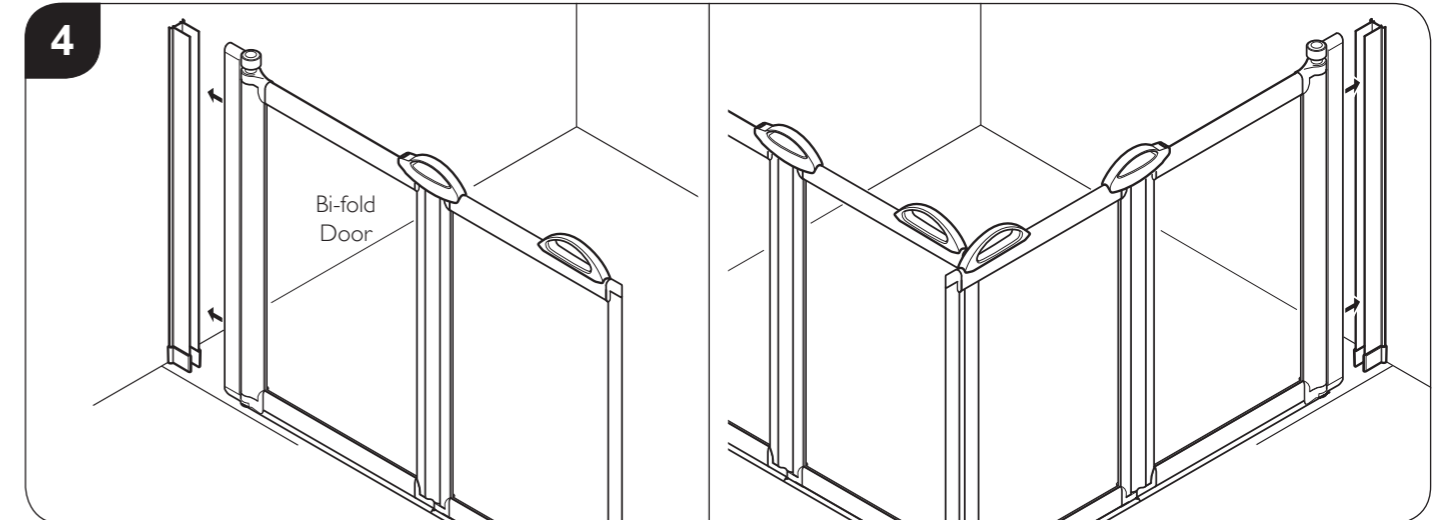


Position the **long** wall channels 15mm in from the edge of the tray/dec as shown. Ensure wall channel is vertical and mark both hole positions onto the wall. Drill wall using a 6.5mm drill bit and insert wall plugs (3230). Fix wall channel to the wall using 2x washers (8212) and 50mm screws (50539). **Do not overtighten screws.**

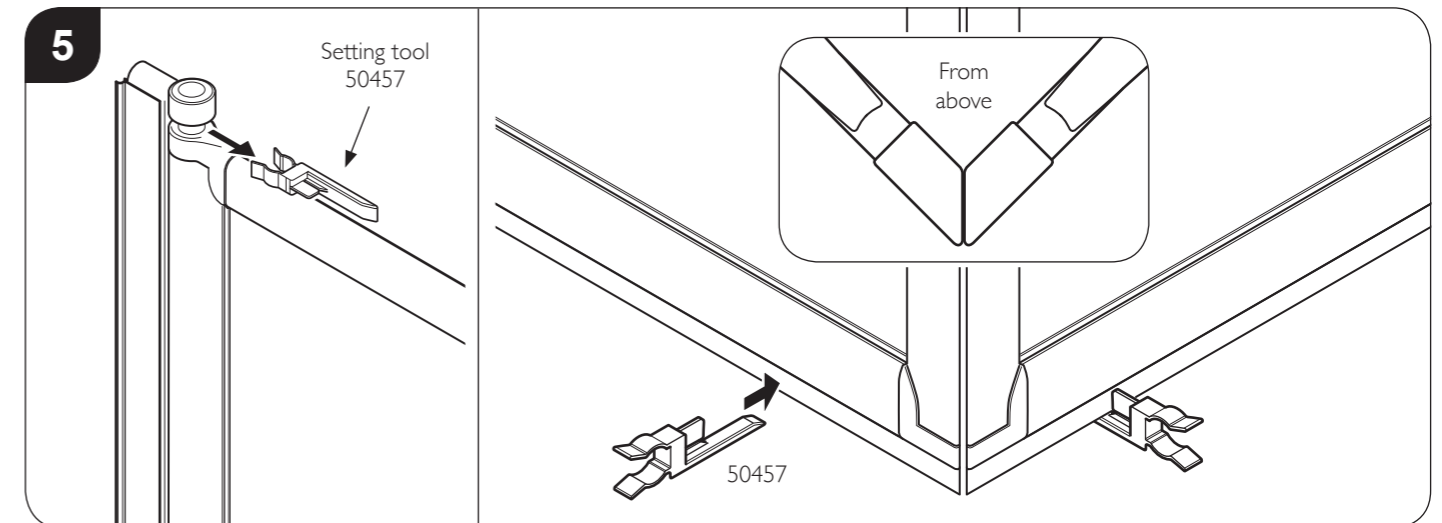


**Fitting Optional Door Handle:** Position the door handle/s vertically near the front (magnetic closer end) of the door/s. Mark and drill the fixing holes using a 3mm drill bit. Attach using the 10mm screws (3222) and push fit handle screw covers.

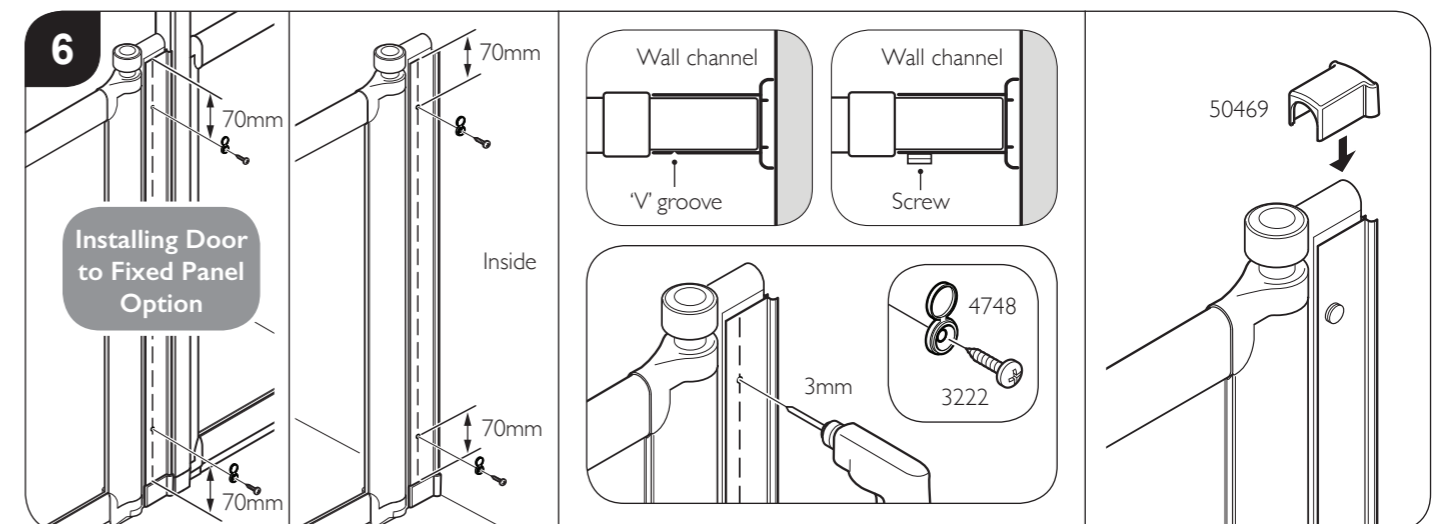
## Section C Corner Enclosure - Fitting Doors



Fully insert both Doors into the wall channels (Bi-fold doors shown as example).



**To level the doors:** Using the setting tool, set the height of the doors ensuring the magnets line up down the full length of the doors. Insert the setting tools under the seals at the end of the doors. Allow the doors to rest on the door setting tools as shown above, this ensures the doors are correctly height adjusted. **Note:** The Setting blocks are supplied clipped onto the door pivots.



**With the Doors level and centralised between wall channels:** On the inside of the door (on the 'V' groove line marked on the wall channel), drill 2x 3mm holes through the wall channel into the door, 70mm down from the top and up from the bottom of the wall channel as shown. Fix using 2x 10mm screws (3222) and covers caps (4748). Repeat with other door. Fit Top caps (50469) to top of wall channels. Remove setting tools from under the doors.