

Focus

Single lever shower mixer for exposed installation with 2 flow rates

Finish: **Chrome** Article Number: **31968000**



Description

product features

- 1 function
- centre distance: 150 ± 12 mm
- maximum flow rate at 3 bar: 22 l/min
- ceramic cartridge with Eco handle position for a reduced flowrate by up to 50%
- temperature limitation adjustable
- non-return valve
- with silencer
- hose connection DN15
- connection dimension: DN15
- connection type: s-shaped connections

Technology



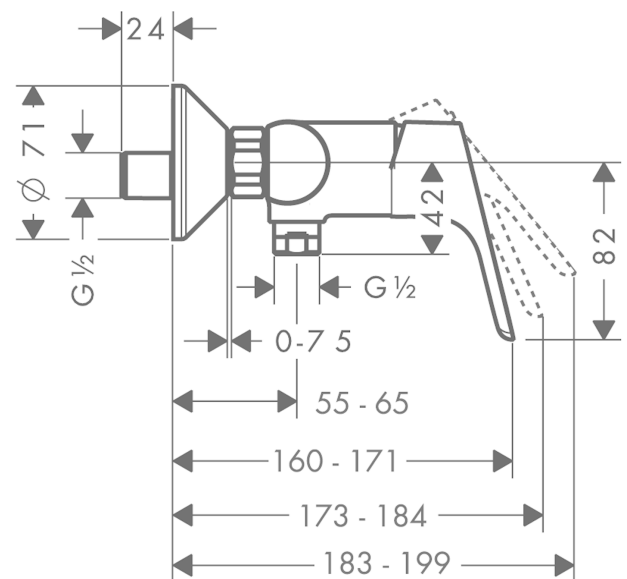
Certificates / Sustainability



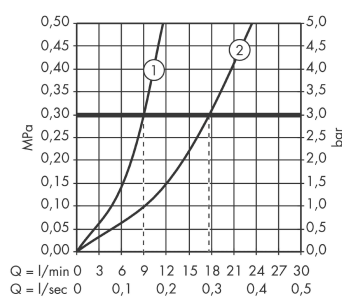
Product image



Scale drawing



Flowchart



- ① Shower outlet 1B-resistance ECO
- ② Shower outlet with 1B-resistance

Focus

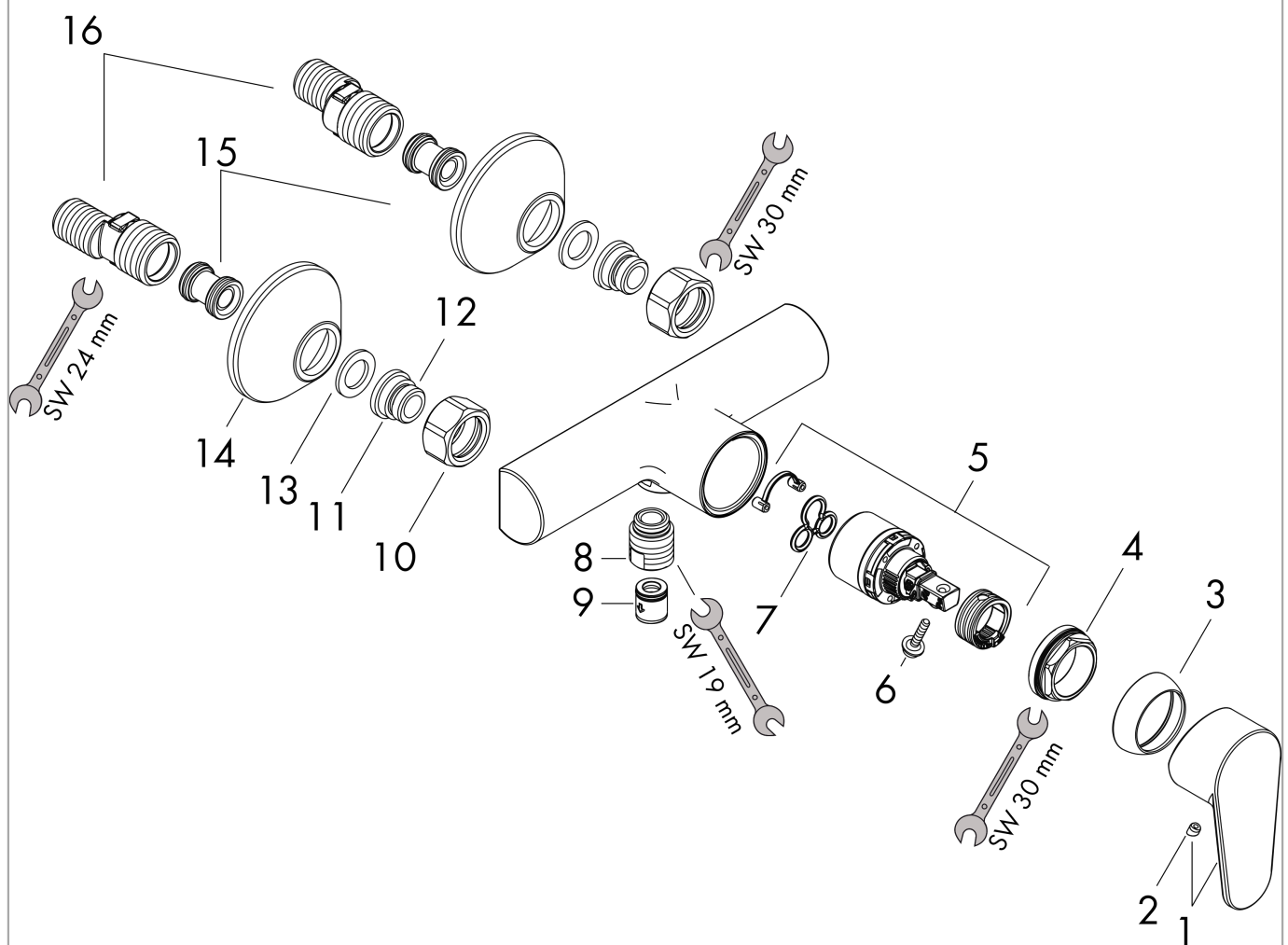
Single lever shower mixer for exposed installation with 2 flow rates

Finish: **Chrome** Article Number: **31968000**



Exploded Drawing

Year of production: >02/10



Focus

Single lever shower mixer for exposed installation with 2 flow rates

Finish: **Chrome** Article Number: **31968000**



Spare part list

Year of production: >02/10

Pos.	Description	Article Number	PC	PU
1	screw cover	96338000	1	1
2	handle	98532000	8	1
3	flange	97406000	6	1
4	nut	97209000	5	1
5	cartridge, assy	95730000	9	1
6	locking screw for handle	95140000	2	1
7	seal	95008000	3	1
8	Hose Connection	96044000	7	1
9	set of non return valves DW 15	94074000	5	1
10	set of nuts	96157000	8	1
11	connecting thread	97220000	5	1
12	O-ring 15x2	98163000	1	1
13	filter packing	96922000	3	1
14	escutcheon Ø 70 mm	94135000	4	1
15	noise reduction	96429000	2	1
16	set of S-unions (±12 mm)	94140000	10	1
a	set of S-unions (±32 mm)	98592000	9	1