



distinctly

abode



**We are truly passionate about
what we do.**

The Abode team have an extensive knowledge of sinks, taps and the kitchen market. Our UK based product designers are dedicated to keeping abreast of the very latest trends in kitchen design, meaning we can bring you the perfect sink & tap pairing for the very latest kitchen furniture trends year after year.

Established in 2002 our thirst for design, innovation, quality and service remains just as strong today as it was on day one.

Keep up to date with the very latest product introductions, news and find a wealth of inspiration from our pages below;

 www.abodedesigns.co.uk  [Instagram.com/abode_home](https://www.instagram.com/abode_home)  [Pinterest.co.uk/AbodeDesigns](https://www.pinterest.co.uk/AbodeDesigns)

 [Facebook.com/abodehomeproducts](https://www.facebook.com/abodehomeproducts)  [Twitter.com/abodehome](https://www.twitter.com/abodehome)



ABODE KITCHEN SINKS AND TAPS ARE
CREATED FOR PEOPLE WHO WANT THE
PERFECT BLEND OF DESIGN, PERFORMANCE
AND SHEER QUALITY.

All Abode products are lovingly crafted and thoroughly tested in our factories prior to making the journey to the centre of your kitchen and daily life.

Buying Abode means complete peace of mind. We have strict quality standards, investing in the very best components and latest manufacturing techniques to ensure long-life performance. We are so confident in the quality of our products that they carry a comprehensive warranty. On top of that, our UK aftersales service team are dedicated in providing superior customer service should you ever need us.



Full details of our warranties can be found on our website;

www.abodedesigns.co.uk/support/warranty





Kitchen Sinks



CONTENTS

Stainless Steel Undermounts	14
Granite Undermounts	32
Ceramic Undermounts	40
Granite Insets	50
Ceramic Insets	68
Stainless Steel Insets	74
Taps	92

Selecting a Sink

1 MATERIAL 2 TYPE 3 SIZE 4 STYLE 5 FEATURES



Material

STAINLESS STEEL: Stainless Steel is a timeless material which remains a popular choice. It is often a perfect match to the kitchen appliances so provides a coordinated finishing touch. As well as the aesthetics, it is easy to maintain and is extremely durable. All Abode sinks are constructed from premium 304 grade stainless steel and are available in an array of designs.



HYGIENIC



EASY TO CLEAN



HIGH HEAT RESISTANCE



STAIN RESISTANT



CORROSION RESISTANT



PREMIUM GRADE STAINLESS STEEL

GRANITE: SiOForm® is a unique material solution engineered specially for our granite kitchen sink collection. The material is primarily made of pure and natural quartz which makes it very strong and durable, perfect for the kitchen environment. SiOForm® products have a uniform void-free structure and are resistant to dry temperatures up to 280°. Granite sinks also retain the water temperature in the bowl better than stainless steel. Our range consists of several unique designs in various shapes and sizes. In addition, the white, grey and black colour options offer a contemporary styled solution to create a striking focal point in the kitchen.



HYGIENIC



EASY TO CLEAN



UNIFORM STRUCTURE



HIGH CONTENT OF NATURAL MINERAL



STAIN RESISTANT



SCRATCH RESISTANT



IMPACT RESISTANT



THERMAL SHOCK RESISTANT



SURFACE ABRASION RESISTANT

SiOForm® is available in the following colours:



WHITE GRANITE



FROST WHITE



GREY METALLIC



BLACK METALLIC



BLACK GRANITE

CERAMIC: Our ceramic sinks are constructed from the finest grade fireclay and are hand finished for a premium quality finish. This traditional classic is available in undermount, apron front and inset options, providing an elegant finish every time. The glazing process ensures a long lasting and durable finish.



HYGIENIC



EASY TO CLEAN



HIGH HEAT RESISTANCE



STAIN RESISTANT



CHEMICAL RESISTANT



DURABLE AND LONG LASTING

Sink types



UNDERMOUNT: An undermount sink is installed under the worktop for a seamless, premium finish. Undermount sinks look best when installed in solid surface, granite or solid wood worktops. There are a large range of bowl sizes and configurations to choose from in this offer, providing ultimate versatility when it comes to usage requirements. The tap is often mounted on the worktop, adding to the premium, sleek look.



APRON FRONT: This range consists of our Belfast and Provincial products. They are installed under the worktop with the front face visible so require a base cabinet with a specific height to house them. Traditionally these products are ceramic, for a more contemporary/industrial style, opt for the stainless steel Belfast.



INSET: An inset sink sits on top of the worktop and can be installed in any material, including laminate. An inset sink will often have a drainer integrated for ease and durable functionality. The tap is usually mounted on the sink and often these designs have two tap holes so they are reversible, meaning the drainer can be positioned either left or right.

Sink sizes



Across our comprehensive sink collection, we have several sink sizes available. In the initial planning stages, it is important to consider how the kitchen is to be used to determine which option is best suited to your lifestyle requirements.

Think about how the kitchen is used and what elements of a sink would make tasks easier, for example; what typically needs to fit in the main bowl? Is a larger main bowl size needed? Would the addition of a half bowl be beneficial? Is a drainer required?

EXAMPLES ARE AS FOLLOWS;

Single Half Bowl

Single Bowl

1.5 Bowl

Double Bowl

Large & Extra Large Bowl options



Style

The overall style of the kitchen will go a way to dictate the perfect sink and tap pairing. Bring colour into the kitchen with a granite sink and either a perfectly matched or contrasting tap pairing.

For example; an industrial style kitchen with dark colourways looks great with a stainless steel or granite sink plus a perfectly matched tap in stainless steel, black, or graphite. However, consider the finer details such as the handles or any key detailing on appliances/ accessories in the kitchen when selecting the perfect tap finish, it may be that a brass or copper tone is more suited to complement the kitchen overall.

Sink features

LOOK OUT FOR THE FOLLOWING FEATURES ON SELECTED SINK RANGES



FLUSH PLATE OVERFLOW

This removable overflow cover has the following benefits;

Removable for improved sink hygiene (easy clean)

Provides a sleek, premium finish

Constructed from solid stainless steel



ORBIT WASTE

Provides a minimalist look, whilst removing unsightly debris from view

Constructed from stainless steel and rubberised plastic

Dishwasher safe, as well as being easy to empty



TOP MOUNTED OVERFLOW

Allows for maximum bowl filling

Dispose of drinks even when the bowl is full

Applies to Londa and Neron ranges only

All Abode Sinks are supplied with pipework

Look out for the following symbols throughout this section:



REVERSIBLE
Overflow or drainer can be positioned either left or right.



2ND TAP HOLE
FOR SWITCH

STAINLESS STEEL UNDERMOUNTS

Understated simplicity

It's not just the material that's versatile but the range of products in this offer.

We're confident you'll find the perfect solution from our stainless steel undermount collection. Whether you're looking for a small single bowl, one and a half bowl, large bowl or even an extra large bowl!

We also have ranges which allow you to create the undermount look without the expense of solid surface. Take a look at our R15 range which can be either undermounted or inset so worktop material doesn't restrict you from creating the look you desire.



Image shows the R15 Large Single Bowl and Atlas Monobloc in Matt Black

MATRIX R0

This elegant undermount option brings a sharp geometry to the kitchen, complementing popular appliance styling. These precision engineered pieces give a premium finish every time.

1mm durable 304 grade brushed stainless steel construction

Squared edges. Zero-radius construction

Deep bowls to accept larger cookware

Orbit wastes with easy empty, fold-back basket and pipework included

Easy clean flush-plate overflow



Image shows the R0 Large Single Main Bowl

MATRIX R0

Single half bowl



AW5007
Stainless Steel

length 200mm
width 440mm
depth 155mm
bowl 1 capacity 6.3L
min base unit 450mm
Undermount only

Main bowl



AW5008
Stainless Steel

length 380mm
width 438mm
depth 205mm
bowl 1 capacity 21.2L
min base unit 450mm
Undermount only

Large single main bowl



AW5009
Stainless Steel

length 540mm
width 440mm
depth 205mm
bowl 1 capacity 31.2L
min base unit 600mm
Undermount only

1.5 bowl



AW5010-2
Stainless Steel
right hand main bowl

AW5011-2
Stainless Steel
left hand main bowl

length 556mm
width 460mm
depth 205mm
bowl 1 capacity 21.2L
min base unit 600mm
Undermount only

Double bowl



AW5012-2
Stainless Steel

length 736mm
width 460mm
depth 205mm
bowl 1 capacity 21.2L
min base unit 800mm
Undermount only



Full specification documents can be found at www.abodedesigns.co.uk



Low profile inset installation

MATRIX R15

The R15 range is the most versatile undermount stainless steel sink in our offer. Not only can the products in this collection be installed either undermounted or inset, but there are six different bowl sizes available. The way we each use our kitchen differs, perhaps you are a keen cook or entertain often? If so, you would benefit from an extra-large bowl in which you can fit large pans, trays or barbecue racks that won't fit in the dishwasher.

1mm durable 304 grade brushed stainless steel construction

Orbit wastes with easy empty, fold-back basket and pipework included

Minimal 15mm radius corners. Stylish yet still easy to clean

Deep bowls and good breadth of range

With easy clean flush-plate overflow



Undermount installation

Image shows the Matrix R15 Single Bowl and Prothia Slimline Monobloc Swan in Chrome

MATRIX R15

Single bowl



AW5121
Stainless Steel

length 380mm
width 440mm
depth 202mm
bowl l capacity 18.5L
min base unit 500mm

Can be undermounted or inset

Large single bowl



AW5122
Stainless Steel

length 540mm
width 440mm
depth 205mm
bowl l capacity 27.6L
min base unit 600mm

Can be undermounted or inset

Extra large single bowl



AW5128
Stainless Steel

length 750mm
width 440mm
depth 205mm
bowl l capacity 43L
min base unit 1000mm

Can be undermounted or inset

Double bowl



AW5123
Stainless Steel

length 740mm
width 440mm
depth 202mm
bowl l capacity 18.5L
min base unit 800mm

Can be undermounted or inset

1.5 bowl



AW5124
Stainless Steel
left hand main bowl

AW5126
Stainless Steel
right hand main bowl

length 580mm
width 440mm
depth 202mm
bowl l capacity 18.5L
min base unit 800mm

Can be undermounted or inset



1.5 large bowl



AW5125
Stainless Steel
left hand main bowl

AW5127
Stainless Steel
right hand main bowl

length 740mm
width 440mm
depth 205mm
bowl l capacity 27.6L
min base unit 800mm

Can be undermounted or inset



MATRIX R50

The Matrix R50 range is designed to enable a combination approach to your sink layout or for a single product installation. With smooth contoured bowl edges for a sleek finish.

0.7mm 304 grade polished stainless steel construction

50mm radius corners for ease of cleaning

Orbit wastes with easy empty, fold-back basket and pipework included

Six bowl sizes to choose from



Image shows the R50 1.5 Bowl and Atlas Monobloc in Brushed Nickel

MATRIX R50

Single half bowl



AW5013
Stainless Steel

length 168mm
width 318mm
depth 155mm
bowl I capacity 4.4L
min base unit 450mm

Undermount only

Main bowl



AW5014
Stainless Steel

length 370mm
width 430mm
depth 205mm
bowl I capacity 20.3L
min base unit 450mm

Undermount only

Large single bowl



AW5015
Stainless Steel

length 535mm
width 435mm
depth 205mm
bowl I capacity 37.0L
min base unit 600mm

Undermount only

1.5 bowl



AW5017
Stainless Steel
left hand main bowl

AW5016
Stainless Steel
right hand main bowl

length 572mm
width 450mm
depth 205mm
bowl I capacity 20.3L
min base unit 600mm

Undermount only

Extra large single bowl



AW5099
Stainless Steel

length 860mm
width 510mm
depth 225mm
bowl I capacity 46.4L
min base unit 1000mm

Can be undermounted or inset.
When undermounted choose to have the tap deck exposed or concealed.

One and three quarter bowl



AW5018
Stainless Steel

length 755mm
width 450mm
depth 205mm
bowl I capacity 20.3L
min base unit 800mm

Undermount only



Full specification documents can be found at www.abodedesigns.co.uk

STAINLESS STEEL BELFAST

This contemporary twist on a classic design is a real showstopper. Its large capacity bowl is ideally suited to the keen chef, making washing large pots and pans that are not suitable for the dishwasher a breeze. Pair with a tap from the Hex collection to add true industrial edge to your kitchen.

Single bowl

1.2mm thick 304 grade brushed stainless steel

Orbit waste with easy empty, fold-back basket and pipework included

90mm waste hole to accept waste disposal unit

Flush-plate overflow for a sleek contemporary look

Sit on installation

Fits 600mm Belfast base units



AW5135 Stainless Steel

length 600mm
width 465mm
depth 254mm
bowl | capacity 38.1L
min base unit 600mm

Full specification documents can be found at www.abodedesigns.co.uk



Image shows the Stainless Steel Belfast and HEX Professional

STUDIO COMPACT

The Studio was designed for compact kitchens and grander installations alike. In smaller kitchens maximise worktop space thanks to Studio's compact yet functional proportions, or install as a practical preparation sink, ideally suited for steaming hot water taps. Three accessories are supplied with the Studio sink, adding useful functionality where space is limited.

Single bowl

Two installation options available:

600mm cabinet requirement in horizontal mounting position (450mm in vertical)

Low profile inset or undermount installation

1mm 304 grade brushed stainless steel

Small radius bowl corners for contemporary style with effortless cleaning

Orbit waste with easy empty, fold-back basket and pipework included

Flush-plate overflow for a sleek contemporary look



AW5134

Stainless Steel

length 500mm

width 300mm

depth 205mm

bowl 1 capacity 16.9L

min base unit 450mm (vertical mounting)

600mm (horizontal mounting)



Comes complete with 3 practical accessories; strainer, colander and mini bowl in the pack

Full specification documents can be found at www.abodedesigns.co.uk

SINKS

STAINLESS STEEL UNDERMOUNTS 31



Image shows the Studio Compact and HEX Single Lever Pull Out in Brushed Nickel

GRANITE UNDERMOUNTS

Find the perfect match for your décor with our range of granite sinks. Available in three colours; black, grey and white there is sure to be something to suit your requirements. Our black and grey options have a metallic fleck to ensure a premium finish.

For details on the benefits of our SioForm® granite composition see page 09.



Image shows the Matrix GRI 5 2 Bowl In Black Metallic Granite and Virtue Nero Pull Out

MATRIX GR15

Beautifully versatile. The GR15 collection has a smooth contoured body offering a seamless finish. Choose from four different bowl sizes and three different granite colours, all of which have two installation options.

Pure and natural quartz construction for ultimate durability

Can be undermounted or inset in worktops

Resistant to temperatures up to 280°C, surface abrasion and scratches.
Long-lasting quality

Smooth surface finish

Softened square edges for a crisp look whilst remaining easy to clean

Orbit wastes with easy empty, fold-back basket and pipework included



Image shows the Matrix GR15 1.5 Bowl in Grey Metallic Granite and Genio Semi-Professional Monobloc

MATRIX GR15

Single bowl



AW3124
Black Metallic Granite

AW3125
White Granite

AW3133
Grey Metallic Granite

length 460mm
width 460mm
depth 220mm
bowl 1 capacity 20.8L
min base unit 500mm

**Can be undermounted
or inset**

Large main bowl



AW3126
Black Metallic Granite

AW3127
White Granite

AW3134
Grey Metallic Granite

length 560mm
width 460mm
depth 225mm
bowl 1 capacity 26L
min base unit 600mm

**Can be undermounted
or inset**

1.5 bowl
[reversible*]



AW3128
Black Metallic Granite

AW3129
White Granite

AW3135
Grey Metallic Granite

length 560mm
width 460mm
depth 220mm
bowl 1 capacity 14L
min base unit 600mm

**Can be undermounted
or inset**

Double bowl



AW3166
Black Metallic Granite

AW3165
Grey Metallic Granite

length 758mm
width 460mm
depth 220mm
bowl 1 capacity 16.8L
min base unit 800mm

Undermount only



* Handing as shown (left hand main bowl) sets waste slightly towards the back of sink cabinet. Right hand main bowl installations are valid, but wastes will be offset slightly forward. For more info see full specification sheet on our website.

DENTON

Perfect for compact kitchens and grander installations alike. In smaller spaces maximise worktop area thanks to Denton's small proportions or install as a practical preparation sink in a kitchen island unit as an addition to the main kitchen sink.

Single bowl

- Durable and hygienic composite granite construction with high temperature resistance (280°C)
- Compact design ideally suited for smaller installations or perfect as a second sink
- Undermount installation
- 600mm cabinet requirement in horizontal mounting position or 450mm in the vertical position
- Designed with small radius corners for a sharp look whilst remaining easy to clean
- Orbit waste with easy empty, fold-back basket and pipework included



AW3167
Grey Metallic Granite

length 500mm
width 363mm
depth 198mm
bowl 1 capacity 12.1L
min base unit 450mm or 600mm

Full specification documents can be found at www.abodedesigns.co.uk



Image shows the Denton and Prime Single Lever in Matt Black

CERAMIC UNDERMOUNTS

Ceramic sinks are often perceived purely as a traditional option for a traditional setting, however this range of products is extremely adaptable. Try pairing with a contemporary tap in the finish of the moment for a striking effect.



Image shows the Belfast Sink and Atik Monobloc in Matt Black



BELFAST

A true classic! The Belfast sink is a staple when it comes to a traditional kitchen, not only does it sit beautifully in any kitchen setting, but it has a large bowl capacity making it perfect for the busy household or keen cook. Try mixing this classic sink with a contemporary tap to inject a modern twist, suitably paired with the other finer details of your kitchen design.

Large bowl
[reversible]



Durable finest grade fireclay construction throughout

High capacity bowl volume to accept larger cookware

60mm basket strainer waste supplied

Smooth, contoured integral weir overflow built-in

AW1022
White Ceramic



length 595mm
width 455mm
depth 275mm
bowl 1 capacity 42.3L
min base unit 600mm

Full specification documents can be found at www.abodedesigns.co.uk

PROVINCIAL

Nature is central to our ceramic sink collection, so it is only natural that we have chosen the finest fireclay to produce our Provincial sink collection. This truly timeless design sits on an 800mm custom base unit and is available in a large bowl and a two-bowl option.

Large single bowl



AW1020

White Ceramic

length 795mm
width 460mm
depth 220mm
bowl 1 capacity 37.7L
min base unit 800mm

Large double bowl



AW1021

White Ceramic

length 794mm
width 490mm
depth 220mm
bowl 1 capacity 20.1L
min base unit 800mm

Durable finest grade fireclay
construction throughout

High capacity bowl volume to accept
larger cookware

90mm basket strainer waste(s)
supplied

Punched tap hole on the
2 bowl version

Worktop can be cut to cover tap deck
(as shown right)

Full specification documents can be found at www.abodedesigns.co.uk



Image shows the Provincial Large Double Bowl and Astbury Bridge with Handspray in Chrome (see Classically Abode brochure)

SANDON

This versatile range offers the possibility of seamless integration with undermount installation or simplicity with inset installation. Available in a variety of bowl sizes this collection will sit beautifully in traditional or contemporary settings alike.

Durable finest grade fireclay construction throughout

Orbit wastes with easy empty, fold-back basket and pipework included

Modern flush-plate overflow

Wide variety of design options



Image shows the Sandon Large Single Bowl and HEX Single Lever in Antique Brass



Image shows the Sandon 1.5 Bowl and Prothia Slimline Monobloc Quad Spout in Brushed Nickel

SANDON

Single bowl



AW1030
White Ceramic

length 460mm
width 460mm
depth 220mm
bowl 1 capacity 19.5L
min base unit 500mm [if inset],
600mm [if undermounted]

Can be undermounted or inset

Large single bowl



AW1031
White Ceramic

length 595mm
width 460mm
depth 220mm
bowl 1 capacity 26.3L
min base unit 600mm [if inset],
800mm [if undermounted]

Can be undermounted or inset

1.5 bowl [with tap gap]



AW1032
White Ceramic

length 595mm
width 520mm
depth 220mm
bowl 1 capacity 26.5L
min base unit 600mm [if inset],
800mm [if undermounted]

Can be undermounted or inset

1.5 bowl



AW1033
White Ceramic

length 595mm
width 460mm
depth 220mm
bowl 1 capacity 21.5L
min base unit 600mm [if inset],
800mm [if undermounted]

Can be undermounted or inset

Shown with intended, left-hand main bowl
handing. N.B. overflow will be on opposite
side if mounting right-hand-main bowl

Full specification documents can be found at www.abodedesigns.co.uk

GRANITE INSETS

Our range of inset granite sinks are truly distinctive. There are models with curvaceous contours and drainers with real design flair. These sinks don't only have big personality, they have true functionality. With 5 colours available across the range and all models constructed from our SiOForm® material, these sinks are as durable as they are striking.

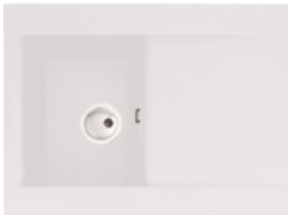


Image shows the Zero 1.0 Bowl in Black Metallic Granite and Pico Monobloc in Matt Black

ASPEKT

The curvaceous contours of the Aspekt make this sink a truly showstopping piece in any kitchen. The way the drainer flows down into the main bowl is a thing of elegance, all contrasted with square edges for a sharp and striking finish.

Single bowl and drainer
[reversible]



AW3001
Black Metallic Granite  

AW3101
White Granite

length 716mm
width 540mm
depth 205mm
bowl | capacity 10.46L
min base unit 450mm

1.5 bowl and drainer
[reversible]



AW3002
Black Metallic Granite  

AW3102
White Granite

length 950mm
width 540mm
depth 205mm
bowl | capacity 9.17L
min base unit 600mm



The black option features a discreet metallic fleck to add sparkle to your kitchen. The white offers a pure, natural finish that will provide the perfect finishing touch in most interiors

Orbit wastes with easy empty fold-back basket and pipework supplied

Full specification documents can be found at www.abodedesigns.co.uk



DUNE

The Dune collection takes its name from the drainer design, mimicking the soft peaks formed across sand dunes.

Dune takes a truly natural and organic form with its rounded corners which follow through into the bowl styling. Everything combined results in a stunning yet practical range.

Hidden Orbit overflow design

Orbit wastes with easy empty fold-back basket and pipework supplied




Image shows the Dune Single Bowl in Frost White Granite and Atlas Single Lever in Brushed Brass

DUNE

Single bowl and drainer
[reversible]



AW3140
Black Granite



AW3141
Frost White Granite

AW3144
Grey Metallic Granite

length 1000mm
width 500mm
depth 217mm
bowl 1 capacity 22.9L
min base unit 600mm

1.5 bowl and drainer
[reversible]



AW3142
Black Granite



AW3143
Frost White Granite

AW3145
Grey Metallic Granite

length 1000mm
width 500mm
depth 217mm
bowl 1 capacity 24.8L
min base unit 600mm

Full specification documents can be found at www.abodedesigns.co.uk



Image shows the Dune Single Bowl in Frost White Granite

ORIEL

This subtle design is perfectly formed with smooth, organic lines framing the deep bowl. Both styles can be perfectly complemented by an array of tap designs and finishes to create a striking finish.

Single bowl and drainer
[reversible]



AW3112
Black Granite



AW3114
Frost White Granite

length 780mm
width 480mm
depth 200mm
bowl 1 capacity 16L
min base unit 450mm

1.5 bowl and drainer
[reversible]



AW3113
Black Granite



AW3115
Frost White Granite

length 950mm
width 480mm
depth 200mm
bowl 1 capacity 16L
min base unit 600mm

Reversible drainer position for
maximum flexibility

90mm stainless steel basket strainer
waste(s) supplied

Pipework supplied



Image shows the Oriel 1.5 Bowl in Black Granite and Pico Monobloc in Matt Black

Full specification documents can be found at www.abodedesigns.co.uk

XCITE

Strong geometric design with sharp edging and a defined straight drainer pattern is the back bone to the contemporary family. The bowls feature softened square edges for a defined look whilst still being easy to clean.

Reversible drainer position for maximum flexibility

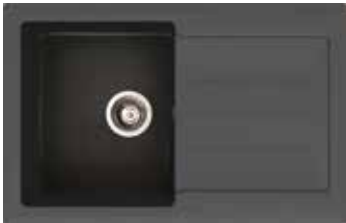
90mm stainless steel basket strainer waste(s) supplied

Pipework supplied

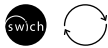


Image shows the Xcite 1.5 Bowl in Black Metallic Granite

Single bowl and drainer
[reversible]



AW3168
Black Metallic Granite



AW3120
Frost White Granite

AW3161
Grey Metallic Granite

length 780mm
width 500mm
depth 190mm
bowl 1 capacity 16L
min base unit 450mm

1.5 bowl and drainer
[reversible]



AW3169
Black Metallic Granite



AW3121
Frost White Granite

AW3162
Grey Metallic Granite

length 1000mm
width 500mm
depth 200mm
bowl 1 capacity 16L
min base unit 600mm



Image shows the Xcite Single Bowl and Althia Single Lever in Brushed Brass

ZERO

The breadth of designs on offer in the Zero collection means you're sure to find an option perfect for you. With double drainer models and large bowl sizes in abundance, not only is this range oozing with style it has true functionality at its heart.

Hidden Orbit overflow design

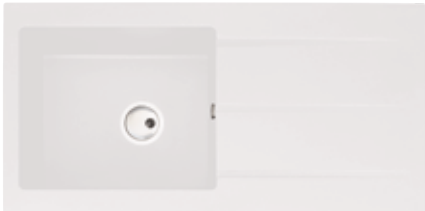
Orbit wastes with easy empty fold-back basket and pipework supplied

With part formed tap holes to be drilled to your preference on installation



ZERO

Single bowl and drainer
[reversible]



AW3007
Black Metallic Granite



AW3107
White Granite

AW3163
Grey Metallic Granite

length 1000mm
width 500mm
depth 220mm
bowl 1 capacity 25.4L
min base unit 600mm

1.5 bowl and drainer
[reversible]



AW3006
Black Metallic Granite



AW3106
White Granite

AW3164
Grey Metallic Granite

length 1000mm
width 500mm
depth 220mm
bowl 1 capacity 29.4L
min base unit 600mm

Single bowl and double drainer
[not handed]



AW3008
Black Metallic Granite



AW3108
White Granite

length 1000mm
width 500mm
depth 220mm
bowl 1 capacity 19.3L
min base unit 450mm

1.5 bowl
[reversible]



AW3005
Black Metallic Granite



AW3105
White Granite

length 600mm
width 500mm
depth 220mm
bowl 1 capacity 29.4L
min base unit 600mm

CERAMIC INSETS

Traditional materials are matched with contemporary designs to create a truly modern and practical offering. This hard-wearing material is the perfect choice for the busy kitchen, it will stand the test of time whilst providing a striking focal point with a perfectly paired tap.



ACTON

Traditional material perfectly blended with contemporary design influences makes the Acton the perfect option for those looking to merge the two elements.

- Durable finest grade fireclay construction throughout
- High capacity bowl volume to accept larger cookware. Maximum main bowl filling due to non-sealing overflow (1.5 bowl only)
- 90mm basket strainer waste(s) and pipework supplied
- Easy clean bowl curves



Image shows the Acton 1.5 Bowl and Gosford Aquifer in Chrome

Single bowl and drainer
[reversible]



AW1040
White Ceramic



length 1000mm
width 500mm
depth 210mm
bowl 1 capacity 28L
min base unit 600mm

1.5 bowl and drainer
[reversible]



AW1041
White Ceramic



length 1000mm
width 500mm
depth 210mm
bowl 1 capacity 21.5L
min base unit 600mm

Full specification documents can be found at
www.abodedesigns.co.uk

MILFORD



The gentle contours of the Milford are in keeping with it's true classic styling to ensure an elegant and traditional finish.

Single bowl and drainer
[reversible]



AWI042
White Ceramic

length 860mm
width 500mm
depth 220mm
bowl l capacity 14.44L
min base unit 450mm



 

1.5 bowl and drainer
[reversible]



AWI043
White Ceramic

length 1000mm
width 500mm
depth 220mm
bowl l capacity 13.5L
min base unit 600mm

Durable finest grade fireclay construction throughout

Option of a compact one bowl, designed to complement smaller kitchens or a practical one and a half bowl

Easy clean bowl curves

90mm basket strainer waste(s) and pipework supplied

Free flowing 60mm waste on half bowl of AWI043 for overflow compliance

Full specification documents can be found at www.abodedesigns.co.uk



Swich Round in Chrome
(sold separately)



Image shows the Milford 1.5 Bowl and Astbury Monobloc in Chrome (see Classically Abode brochure)

STAINLESS STEEL INSETS

Abode have designed and manufactured a large collection of stylish 304 grade stainless steel inset sinks with features throughout. Whether you're looking for a flush fit installation, distinctive drainer, large bowl size, top mounted drainer or sleek simplicity, you'll find a solution in this collection.



Image shows the Neron Single Bowl, Althia Single Lever in Chrome and Swich Round in Chrome

CONNEKT FLUSHFIT

This sink can be fitted perfectly flush at the same surface level as the worktop by fully flush mounting. Alternatively, it can be fitted conventionally as an inset with extremely low-profile edges. Either way this delivers a sleek, premium finish which will be easy to keep clean.

Single bowl and drainer
[reversible]



AW5058
Stainless Steel



length 860mm
width 500mm
depth 183mm
bowl 1 capacity 16.6L
min base unit 450mm
Can be flush fit or inset

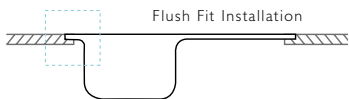
1.5 bowl and drainer
[reversible]



AW5059
Stainless Steel



length 1000mm
width 500mm
depth 195mm
bowl 1 capacity 18.9L
min base unit 600mm
Can be flush fit or inset



0.8mm durable 304 grade brushed stainless steel construction

Suitable for flush fit or inset installation. When inset the profile of the sinks sits at 1mm

Orbit wastes with easy empty fold-back basket and pipework supplied

Brushed steel finish

Full specification documents can be found at www.abodedesigns.co.uk



Image shows the Connekt Flushfit 1.5 Bowl and Atlas Professional Single Lever in Chrome

CONNEKT

With generous bowl sizing and a distinctive drainer pattern the Connekt sink family offers practicality as well as contemporary styling.



Image shows the Connekt Single Bowl and Althia Pull Out in Brushed Nickel

Single bowl and drainer
[reversible]



AW5056
Stainless Steel

length 860mm
width 500mm
depth 190mm
bowl 1 capacity 16L
min base unit 450mm



1.5 bowl and drainer
[reversible]



AW5057
Stainless Steel

length 1000mm
width 500mm
depth 195mm
bowl 1 capacity 18.9L
min base unit 600mm



Double bowl and drainer
[reversible]



AW5060
Stainless Steel

length 1160mm
width 500mm
depth 195mm
bowl 1 capacity 18.9L
min base unit 800mm



0.8mm durable 304 grade brushed
stainless steel construction

Orbit wastes with easy empty fold-
back basket and pipework supplied

The unique two bowl option is ideal
for use in the utility room to make
those tedious chores that little bit
simpler

Unbrushed steel finish

Full specification documents can be found at www.abodedesigns.co.uk

IXIS

The distinctive drainer pattern of the Ixis creates a finish which is the perfect addition to a contemporary kitchen in need of some design flair in the sink area.

Single compact bowl and drainer
[reversible]



AW5101
Stainless Steel

length 860mm
width 500mm
depth 195mm
bowl | capacity 16.8L
min base unit 450mm



 

Single large bowl and drainer
[reversible]



AW5102
Stainless Steel

length 1000mm
width 500mm
depth 201mm
bowl | capacity 27.4L
min base unit 600mm



 

1.5 bowl and drainer
[reversible]



AW5103
Stainless Steel

length 1000mm
width 500mm
depth 195mm
bowl | capacity 16.8L
min base unit 600mm

0.8mm durable 304 grade brushed stainless steel construction

Orbit wastes with easy empty fold-back basket and pipework supplied

Brushed steel finish

Full specification documents can be found at
www.abodedesigns.co.uk



Image shows the Ixis 1.5 Bowl and Quantic Monobloc in Chrome



MIKRO

A classic style which can be paired with a large selection of mixer taps to inject the kitchen or utility room with the level of functionality it needs.

Single bowl and drainer
[reversible]



AW5062
Stainless Steel

length 860mm
width 500mm
depth 187mm
bowl 1 capacity 13.5L
min base unit 450mm



1.5 bowl and drainer
[reversible]



AW5061
Stainless Steel

length 1000mm
width 500mm
depth 187mm
bowl 1 capacity 13.7L
min base unit 600mm



0.7mm durable 304 grade brushed
stainless steel construction

90mm basket strainer waste(s) and
pipework supplied

Unbrushed steel finish

Full specification documents can be found at www.abodedesigns.co.uk

NERON

A sleek design with linear influences and true practicality at heart. The single bowl designs have a top mounted flush-plate overflow next to the drainer so if the bowl is full you can still pour away drinks if needed. You also have the allowance of optimum bowl filling for cleaning larger items.

0.7mm durable 304 grade brushed stainless steel construction

Orbit wastes with easy empty fold-back basket and pipework supplied

Flush-plate overflow integrated beside the drainer on one bowl options and side mounted in the 1.5 bowl design

High bowl capacity of up to 36.2L

Brushed steel finish



Image shows the Neron Single Bowl, Althia Single Lever in Chrome and Switch Round in Chrome



NERON

Single compact bowl and drainer
[reversible]



AW5111
Stainless Steel

length 860mm
width 500mm
depth 220mm
bowl | capacity 27.3L
min base unit 500mm



Large single bowl and drainer
[reversible]



AW5112
Stainless Steel

length 1000mm
width 500mm
depth 219mm
bowl | capacity 36.2L
min base unit 600mm



1.5 bowl and drainer
[reversible]



AW5113
Stainless Steel

length 1000mm
width 500mm
depth 218mm
bowl | capacity 19.1L
min base unit 600mm



Full specification documents can be found at www.abodedesigns.co.uk

TRYDENT

This simple yet classic sink design can look equally at home in both modern or traditionally styled interiors. Add a Swich device to the second tap hole for filtered water from any chosen standard tap.

Single bowl and drainer
[reversible]



AW5054
Stainless Steel

length 860mm
width 500mm
depth 175mm
bowl 1 capacity 15.1L
min base unit 450mm



- 0.6mm durable 304 grade brushed stainless steel construction
- 90mm basket strainer waste(s) and pipework supplied
- Distinctive drainer pattern
- Unbrushed steel finish

1.5 bowl and drainer
[reversible]



AW5055
Stainless Steel

length 1000mm
width 500mm
depth 175mm
bowl 1 capacity 15.1L
min base unit 600mm

Full specification documents can be found at www.abodedesigns.co.uk



Image shows the Trydent 1.5 Bowl and Nexa Monobloc in Chrome

VERVE

The tight corners and sleek drainer give Verve its premium, contemporary appearance. With its generous deep bowl sizes, this collection of handmade sinks is as practical as it is stylish.

Single bowl and drainer
[reversible]



AW5136
Stainless Steel

length 1000mm
width 530mm
depth 190mm
bowl 1 capacity 24.8L
min base unit 600mm



1.5 bowl and drainer
[reversible]



AW5137
Stainless Steel

length 1000mm
width 530mm
depth 190mm
bowl 1 capacity 19.3L
min base unit 600mm



Durable and resilient 304 stainless steel with 1mm construction

Solid tap deck for sturdy installation of mixer tap

Orbit wastes with easy empty fold-back basket and pipework supplied

90mm waste hole allowing waste disposer installation

Brushed finish



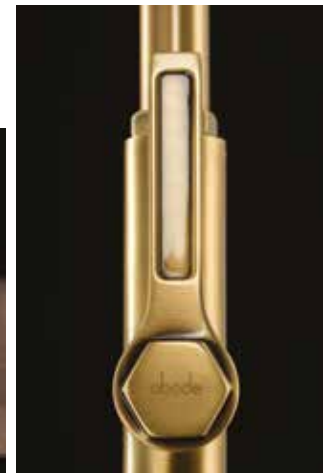
Full specification documents can be found at www.abodedesigns.co.uk



Image shows the Verve 1.5 Bowl



Taps



CONTENTS

Steaming Hot Water Taps	98
Industrial Style Taps	128
Contemporary:	
Single Lever Taps	148
Monobloc Taps	172
Pull Out & Professional Taps	198
Stainless Steel Taps	224
Traditional Taps	236
Water Filter Taps	252
Switch	266
Tap Accessories	270

Style & finishes

A completely unique range of designs shaped by our UK design team. From contemporary single levers and functional steaming hot water taps to traditional monoblocs in a variety of finishes, we have an extensive range to ensure we have the perfect high quality design for every kitchen.

Design, quality and innovation are at the heart of what we do.

Finding a tap that not only matches, but perfectly complements your kitchen and all of the accessories within it can be challenging. That's why we are constantly updating our portfolio, as well as adding new finishes to the mix to ensure the perfect finishing touch every time.



Steaming Hot Water Taps



Industrial



Single Levers



Monoblocs



Water
Filter
Taps



Stainless Steel



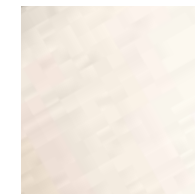
Pull Outs and Professional



Traditional



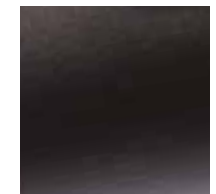
CHROME



BRUSHED NICKEL



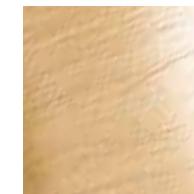
GRAPHITE



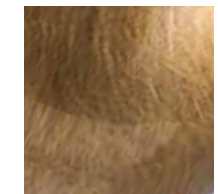
MATT BLACK



STAINLESS STEEL



BRUSHED BRASS



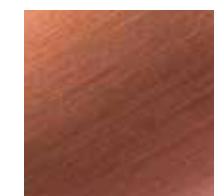
ANTIQUE BRASS



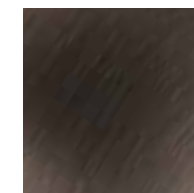
FORGED BRASS*



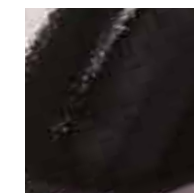
CENTURY COPPER*



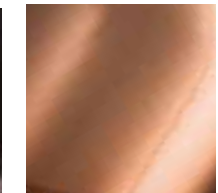
URBAN COPPER



PEWTER*



BLACK NICKEL



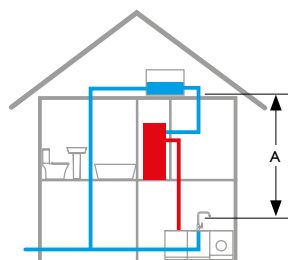
POLISHED COPPER

* See Classically Abode brochure for the range

Tap performance

To ensure you achieve the best possible performance from your chosen tap, you need to be able to identify the existing plumbing system in place and therefore estimate the water pressure.

The following information provides a general overview on water pressure, however we do recommend that a plumber checks your water pressure with a pressure gauge.



Lower Pressure (gravity fed / vented system)

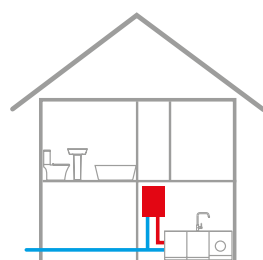
You have a cold water tank in the loft space and a hot water tank in the airing cupboard

You don't have an additional pump which is activated when you turn on any hot tap

The amount of hot water available to you is limited

With a gravity fed system you can approximate your hot water pressure by dividing the vertical distance (A) in metres by 10 (e.g. 3m = 0.3 Bar)

You should choose taps which are suitable for use with a lower pressure system



High Pressure (combi boiler)

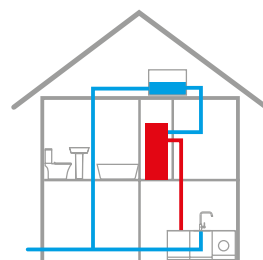
You have a boiler but no separate hot water storage cylinder

The boiler is typically found in the kitchen

Hot water is delivered instantly and on demand

This system typically delivers the hot water between 1 and 1.5 bar

You should be free to choose from most of our tap range



High Pressure (pumped gravity fed system)

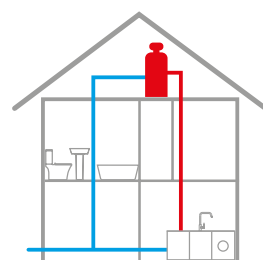
You have a cold water tank in the loft and a hot water cylinder in the airing cupboard

You have an additional pump (normally located near the hot water cylinder) which is automatically activated when you turn on any hot tap

The pressure is defined by the pump. See pump manufacturer's details.

You should be free to choose from most of our tap range

The amount of hot water available is limited



High Pressure (unventilated system)

Most commonly referred to as a "Megaflo" or similar brand

You have a hot water cylinder directly connected to the cold water supply. Above the cylinder could be an expansion vessel. (The hot water cylinder is typically in the loft space)

You do not have a cold water tank

The hot and cold water pressure is typically around 3 bar

The amount of hot water available is limited

You should be free to choose from any of our taps



WATER AERATION

All mixers use spout aerators or flow straighteners to add bubbles to the water. These innovations in fluid technology keep your water flow in a controlled and distinctive pattern and eliminates splash back.

VALVE CARTRIDGES

Abode use ceramic disc valves in all of our tap designs. These are tested for over 200,000 cycles before we will pass them for use within our taps. Why? Well this means that under normal use conditions your tap valves have proven that they will work for many years to come. The kitchen tap is the most used appliance in the kitchen, so valve quality assurance is essential.

TESTING

Abode products are designed specifically for the UK by our team of in-house designers. We use artisan hand polishing techniques, sophisticated plating and powder coating processes to ensure a blemish free surface, along with robotic production of parts for precision. Every Abode product is 100% end of line tested before it leaves the factory, giving you absolute peace of mind.

LUXURY PACKAGING

After taking all this care with the product, we want to ensure they reach you in perfect condition with all the parts that you will need for a seamless and straightforward installation. Fixing kits and tail pipes (with non return valves where necessary) are provided. If the tap is heavy or tall, we also provide you with a tap stabilisation bracket in the box. We try and think of everything so you don't have to.

Throughout this section you will see the following symbols next to products where relevant:



MINIMUM BAR PRESSURE



JET SPRAY / REVOLVE AERATOR



360° SWIVEL SPOUT



180° SWIVEL SPOUT



120° SWIVEL SPOUT

PRONTEAU™
by obode

STEAMING HOT WATER TAPS

Useful technology is fast becoming the norm in the modern kitchen, with hot water taps being firmly among their number. Many of us increasingly look for additional functionality from the kitchen tap as we would from an appliance. Steaming hot water taps fulfill a need and we'll put your mind at ease about any safety concerns across the following pages, a steaming hot water tap is safer than a kettle in many ways.



Why should I choose a **PRONTEAU**TM by obode Steaming Hot Water Tap?



1/ SAVE TIME

Adding a Pronteau to the kitchen is guaranteed to make a difference and leave you thinking how you got by without a steaming hot water tap.

Some of the benefits to note are;

- Instant hot drinks
- Speed up cooking tasks such as pan filling for vegetables, pasta or rice cooking
- Instant porridge or noodles
- Speeding up cleaning tasks such as pan and dish rinsing

2/ DO YOUR BIT FOR THE ENVIRONMENT



By switching to filtered water from the tap in comparison to buying bottled mineral water you will save money as well as aiding the reduction of plastic waste.

Our 4 IN 1 ranges have it all, domestic hot & cold water, filtered steaming hot water and filtered cold water.

All Pronteau filters are part of a **FREE filter recycle scheme**.



3/ STREAMLINE THE KITCHEN

Free up worktop and fridge space of kettles and filter jugs for clutter-free worktops and that extra fridge space that we often find ourselves needing.

4/ SERVICE ON HAND

We have an in-house Pronteau specialist service team and engineer fleet on the road.



5/ REDUCE WATER WASTAGE

As there is no need to fill the kettle every time a hot drink is made or a pan is to be filled, you will find that water and energy wastage in the household is reduced.

6/ IMPROVE THE TASTE OF HOT DRINKS WHILST PROTECTING YOUR BOILER

All Pronteau products are supplied with a filter. This filter has an important role as it maintains the long-term health of your boiler, preventing excessive limescale build up.

Secondly, achieve great tasting hot drinks every time as the filter will improve the taste of your water and prevent the scum that you sometimes find on hot drinks.



8/ GET THE PERFECT HOT DRINK

With all our hot water products, you can set the boiler to temperature's between 75 and 98 degrees allowing you to dispense water at the optimum temperature for your needs.

Check our handy table showing the perfect temperature for a range of hot drinks at pronteau.co.uk



7/ NEVER WORRY ABOUT SAFETY

Our products have been designed with safety in-mind. Our patented HotKey® range is considered by many as the safest hot tap option as the HotKey® can be stored out of reach of children when not in use. The ProBoil.2X collection have a two-stage handle to dispense the steaming hot water, push the handle down or slide it across and turn the handle to safely dispense the water.

Choosing the right Hot Water Tap for you

THE PRONTEAU RANGE DOESN'T LIMIT CHOICE. ACROSS THE COLLECTION WE OFFER A WIDE RANGE OF STYLES AND FINISHES TO MEET YOUR DESIGN EXPECTATIONS WITH THE ADDED BENEFIT OF STEAMING HOT WATER ON TAP.



FUNCTIONS

3 IN 1

domestic cold, domestic hot and filtered steaming hot water

4 IN 1

domestic cold, domestic hot, filtered cold and filtered steaming hot water

Why
98 degrees?

When we developed our innovative range of steaming hot water taps for launch in 2016 we took into consideration every aspect of safety, not only for the dispensing of the steaming hot water but also the maximum temperature requirements for the stored water in the boiler. This is the main reason our products store water to a maximum temperature of 98°C, this makes our product fully compliant with Part G(3) of the UK Building Regulations, and all Pronteau taps, boilers and filters are WRAS approved or WRAS pending.



STYLE

A variety of models, styles, popular finishes and boiler sizes allow you to tailor your experience of Pronteau hot water taps to ensure you get the right model for your household.

We have most recently launched our Slimline Prothia 3 IN 1 hot taps that will look perfect in every home. Not only that, our latest 4 IN 1 mechanical range, Propure offer hot and cold domestic supply along with filtered steaming hot and filtered cold drinking water.

Professional style

Available in the 3 IN 1 range. The steaming hot water is dispensed from an outlet in the crossbar. Also features a pull around with spray function for the domestic hot and cold supply.





3 IN 1 with **PROBOIL.2X**

3 IN 1 functionality delivering; domestic hot, domestic cold and steaming hot, filtered water

Dual stage water operation safety - the handles of all taps incorporate safety devices to limit use

Supplied with the compact ProBoil.2X boiler with a 2.1 litre capacity

All Pronteau taps have cool touch spouts thanks to centrally insulated steaming water channel

Supplied with multistage filtration to address scale formation in the boiler, remove contaminants, and improve taste & odour of the steaming hot water to achieve the perfect hot drink

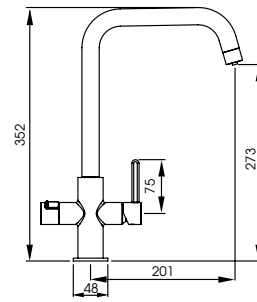
The supplied filter is fully recyclable by Abode



Image shows the Prothia Slimline Monobloc Swan in Matt Black

Prothia
Quad Spout

PT1140
Chrome



The Prothia is based upon our award winning Althia mixertap design series, with the additional functionality of steaming hot water delivered safely through our cool touch spout.

This slimline 3 IN 1 tap is currently the slimmest of its kind in the market.

The steaming hot water is operated by the two stage handle lock on the left. This must be pushed left and held whilst turning the handle back to safely dispense the steaming hot water.



PT1141
Brushed Nickel



PT1142
Matt Black



PT1143
Brushed Brass



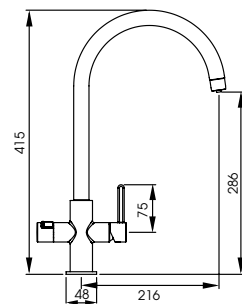
PT1144
Urban Copper



Image shows the Prothia 3 IN 1 Slimline Mixertap with Quad Spout in Brushed Brass

Prothia
Swan Spout

PT1130
Chrome



more Style: Contemporary slimline aesthetic

more Choice: 5 finishes and 2 designs

more Control: Digital boiler interface with filter change indication

more Simplicity: Simple colour coded toolless installation and commissioning

more Safety: Dual stage safety handle for peace of mind



Two stage
handle lock



PT1131
Brushed Nickel



PT1132
Matt Black



PT1133
Brushed Brass



PT1134
Urban Copper

Full specifications are available at www.pronteau.co.uk

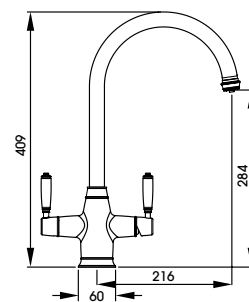


Image shows the Prothia 3 IN 1 Slimline Mixertap with Swan Spout in Chrome



PRONTEAU™
by obode

3 IN 1 with **PROBOIL.2X**



Protrad
Monobloc

PT1190
Chrome



The perfect pairing for an Abode ceramic sink. Our compact PROBOIL.2X boiler sits neatly in a Belfast cabinet.

A truly traditional hot water tap design, based on our popular Astbury and Ludlow collections.

Steaming hot water is dispensed via a two stage handle operation, push the left handle down and pull forward to release the steaming hot water.

Each tap is supplied with the temperature controllable, 2L PROBOIL.2X boiler and paired filter to protect your boiler and deliver the perfect hot drink.



PT1191
Brushed Nickel



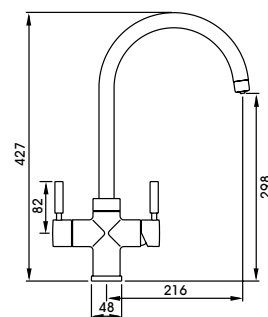
PT1192
Antique Brass

Full specification documents can be found at www.pronteau.co.uk



Prostream
Monobloc

PT1101
Chrome



The Prostream and Prostyle 3 IN 1 kitchen monoblocs deliver hot, cold and steaming hot 98 degrees water directly into your kitchen instantly.

Supplied with the PROBOIL.2X boiler and recyclable PROBOIL filter.



PT1102
Brushed Nickel



PT1103
Graphite



PT1104
Matt Black



PT1105
Urban Copper

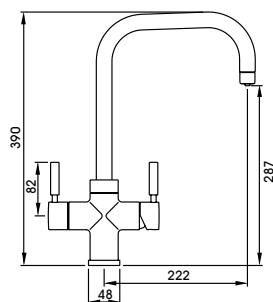


Image shows the Prostream 3 IN 1 Monobloc in Urban Copper



Prostyle
Monobloc

PT1111
Chrome



The Prostream and Prostyle 3 IN 1 kitchen monoblocs deliver hot, cold and steaming hot 98 degrees water directly into your kitchen instantly.

Supplied with the PROBOIL.2X boiler and recyclable PROBOIL filter.



PT1112
Brushed Nickel



PT1113
Graphite



PT1114
Matt Black



PT1115
Urban Copper

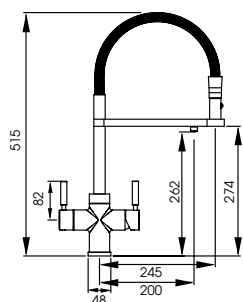


Image shows the Prostyle 3 IN 1 Monobloc in Brushed Nickel



Professional
Monobloc

PT1122
Chrome



3 IN 1 functionality delivering; domestic hot, domestic cold and steaming hot, filtered water

Pull around functionality with spray feature for domestic hot and cold

Dedicated steaming hot water outlet on tap crossbar

Safety 2 stage hot water operation

Energy saving cold Start valve technology

360° cool touch spout thanks to centrally insulated steaming water channel



Full specifications are available at www.pronteau.co.uk



PT1123
Brushed Nickel



Image shows the Professional 3 IN 1 Monobloc in Chrome



4 IN 1 with **PROBOIL.2X**

4 IN 1 functionality delivering; domestic hot, domestic cold and steaming hot, filtered cold water

Dual stage water operation safety - the handles of all taps incorporate safety devices to limit use

Supplied with the new ProBoil.2X boiler with a 2.1 litre capacity

All Pronteau taps have cool touch spouts thanks to centrally insulated steaming water channel

Supplied with multistage filtration to address scale formation in the boiler, remove contaminants, and improve taste & odour of the steaming hot water to achieve the perfect hot drink

The supplied filter is fully recyclable by Abode



Download a copy of the Pronteau brochure at www.pronteau.co.uk

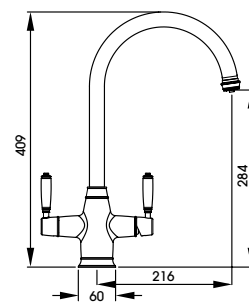


Image shows the Propure 4 IN 1 Monobloc Quad Spout in Matt Black



PRONTEAU™
by obode

4 IN 1 with **PROBOIL.2X**



Protrad
Monobloc

PT1193
Chrome



The perfect pairing for an Abode ceramic sink. Our compact PROBOIL.2X boiler sits neatly in a Belfast cabinet.

A truly traditional hot water tap design, based on our popular Astbury and Ludlow collections.

Steaming hot water is dispensed via a two stage handle operation, push the left handle down and pull forward to release the steaming hot water.

Each tap is supplied with the temperature controllable, 2L PROBOIL.2X boiler and paired filter to protect your boiler and deliver the perfect hot drink.



PT1194
Brushed Nickel

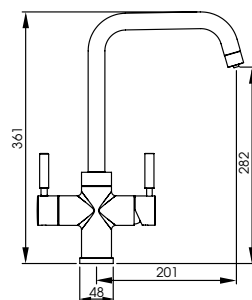


PT1195
Antique Brass

Full specification documents can be found at www.pronteau.co.uk

Propure Monobloc
Quad Spout

PT1160
Chrome



On top of hot & cold domestic water and 98°steaming hot water on demand, Propure offers a more sustainable way of living with the supply of fresh filtered water meaning you can make a start to ditch the use of single use plastic in the home.

Based on our award winning Prostream and Prostyle design series, water is delivered safely through our cool touch spout.



PT1161
Brushed Nickel



PT1162
Matt Black



PT1163
Brushed Brass



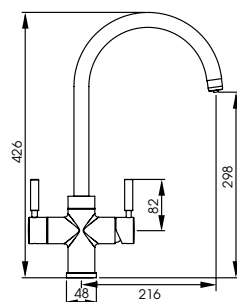
PT1164
Urban Copper



Image shows the Propure 4 IN 1 Monobloc in Brushed Brass

Propure Monobloc
Swan Spout

PT1150
Chrome



more Style: Contemporary aesthetic

more Choice: 5 finishes and 2 designs

more Control: Digital boiler interface with filter change indication

more Simplicity: Simple colour coded toolless installation and commissioning

more Safety: Dual stage safety handle for peace of mind



PT1151
Brushed Nickel



PT1152
Matt Black



PT1153
Brushed Brass



PT1154
Urban Copper



Image shows the Propure 4 IN 1 Monobloc in Chrome

PROBOIL.2X

Fast and simple to install, ProBoil.2X offers a 2.1L stainless steel tank, with a quick re-boil time, controllable temperature range which can be set between 75 and 98 degrees and simple intuitive digital controls.

Factory calibrated to maximise boiler to cup temperatures

Insulated to reduce background heating noise

Toolless installation using hand fix colour coordinated parts

In-tank over boil reservoir speeds and simplifies the installation

WRAS, EMC, LVD & BEAB approved

Predictable, splutter free and regulated water delivery

NATIONAL TEAM OF OVER 30 SERVICE ENGINEERS ACROSS THE UK



HIGHER RATING ELEMENT FOR FASTER RE-BOIL AND HEATING
COMPUTER CONTROLLED:

Touch display - On screen temperature display

No temperature calibration required

Filter life indicator visual and audible

Power saving mode – holiday / eco setting

Selectable temperature range

Boil dry prevention

Self diagnostics

NO EXTERNAL DRAIN VALVE:

Reduced water wastage

No need for additional drain connection

Simpler / faster / more flexible to install

All ProBoil.2X hot water boilers are protected by ProBoil Resin / GAC filters (supplied with all systems), that reduce the water hardness to help extend the life of the tank, as well as improving the taste and clarity of your drinks.

Download a copy of the Pronteau brochure at www.pronteau.co.uk



INDUSTRIAL STYLE TAPS

Add soft industrial touches and texture to your kitchen design with the Hex and Fraction families. Our industrial taps offer will coordinate effortlessly with any kitchen featuring industrial style elements or add interest and edge to a kitchen design featuring traditional elements.

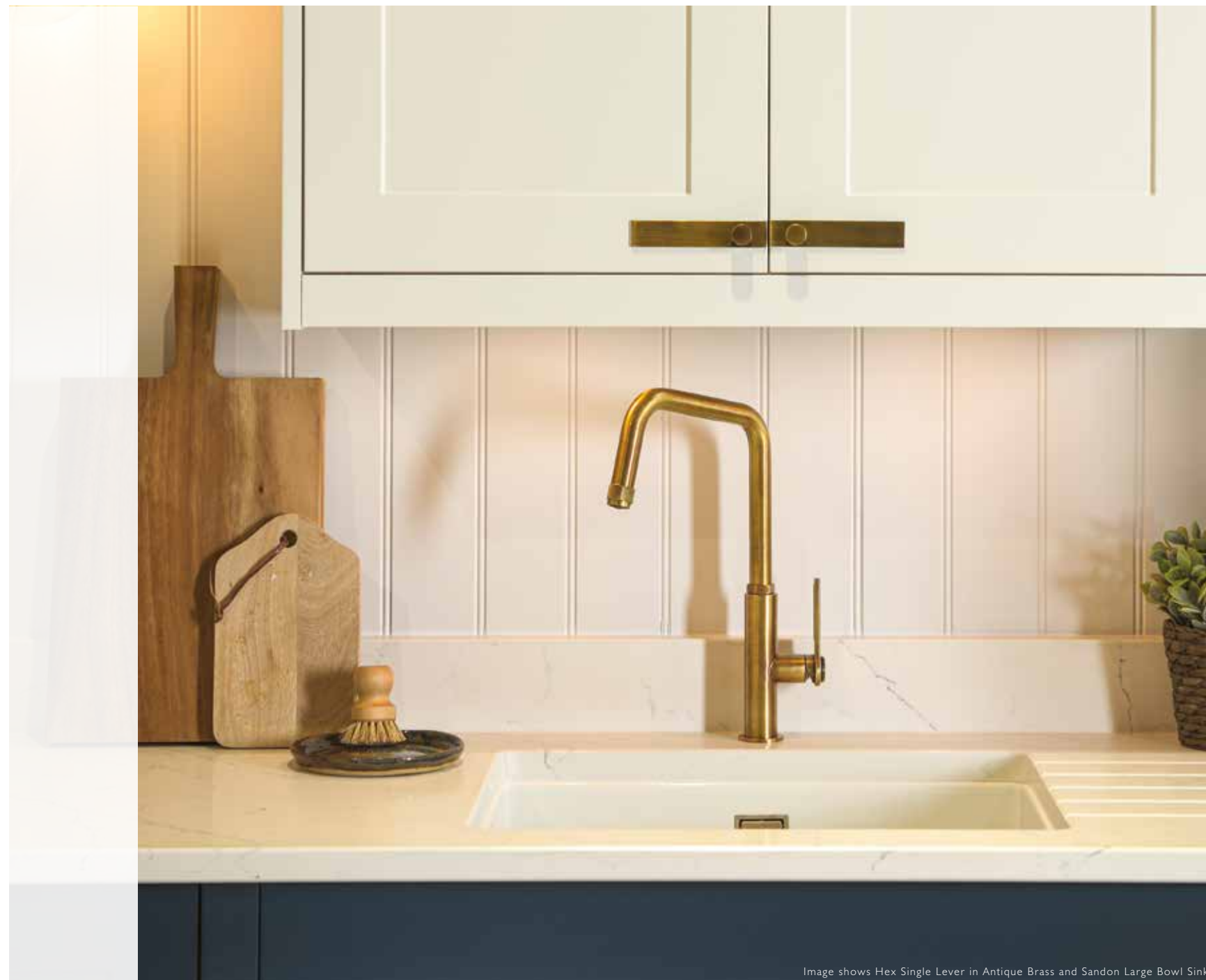


Image shows Hex Single Lever in Antique Brass and Sandon Large Bowl Sink



/ THE INDUSTRIAL TREND CONTINUES TO THRIVE!

We have extended our award winning Hex range by adding a Matt Black finish with brass accents on the spout, handle(s), collar and base plinth to the single lever, dual lever and pull out Hex collections.

Designed to challenge traditional concepts and make the ultimate statement, with distinctive features, the Hex range will coordinate effortlessly with any kitchen featuring industrial style elements and also add interest and edge to a kitchen design featuring traditional elements.

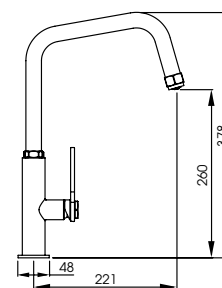
We have strengthened our industrial taps offer further by adding the Fraction collection. A unique L-spout design with cog style detailing on the handle to give a more subtle industrial injection. This collection includes; a single lever, pull out and professional option.

Choose from an array of finishes across this collection for the perfect finishing touch.





Image shows the Sandon Large Single Bowl and HEX Single Lever in Antique Brass



HEX
Single Lever

AT2085
Brushed Nickel



Premium quality brass construction

Striking industrial chic design with hexagonal features on the handle
& tip and base of the spout

Energy efficient cold start function

Hidden cache aerator



AT2086
Matt Black

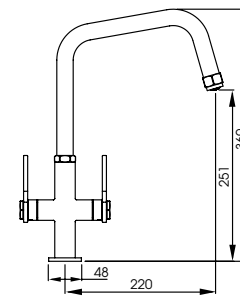


AT2087
Antique Brass



AT2180
Matt Black / Antique Brass

Full specification documents can be found at www.abodedesigns.co.uk



HEX
Monobloc

AT2091
Brushed Nickel



Premium quality solid brass construction

Striking industrial chic design with hexagonal features on the handle
& tip and base of the spout

Industrial styled hot and cold lettering on the handles



AT2092
Matt Black



AT2093
Antique Brass



AT2179
Matt Black / Antique Brass

Full specification documents can be found at www.abodedesigns.co.uk



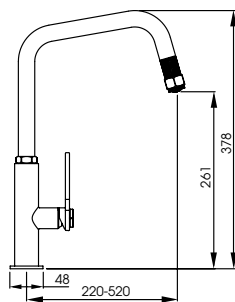
HEX Single Lever Pull Out

AT2088

Brushed Nickel



abode
distinctly



Premium quality brass construction

Striking industrial chic design with hexagonal features and cross hatched knurling detail on the tip of the spout

Pull out hose for additional functionality (no spray function)

Energy efficient cold start function



AT2089
Matt Black



AT2090
Antique Brass



AT2181
Matt Black / Antique Brass

Full specification documents can be found at www.abodedesigns.co.uk

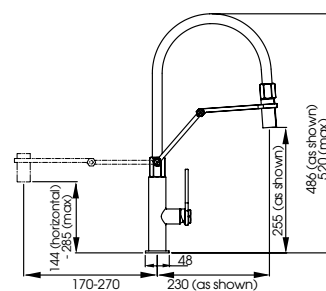
abode



Image shows the Studio Compact and HEX Single Lever Pull Out in Brushed Nickel



Image shows the Matrix R0 Large Single Main Bowl and HEX Professional in Brushed Nickel



HEX Professional
with spray

AT2094
Brushed Nickel



Premium quality solid brass construction

Striking industrial chic design with pivoting mechanical style arm

Contrasting, durable silicone hose cover

Pull-around hose with spray feature

Energy efficient cold start function

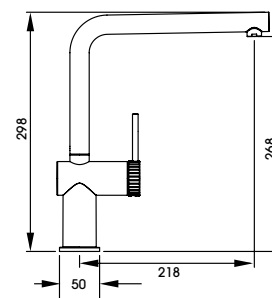
Height adjustable via the central arm and rotating spout capability



Full specification documents can be found at www.abodedesigns.co.uk



Image shows the Fraction Single Lever in Matt Black



Fraction
Single Lever

AT2152
Chrome



The 90-degree angled spout provides sharp yet sophisticated style

Elongated, slim single lever handle for ultimate ease of use

Industrial cog style handle with discreet hot and cold indicators

Available in four finishes, get the perfect finishing touch every time



AT2153
Brushed Nickel



AT2155
Matt Black

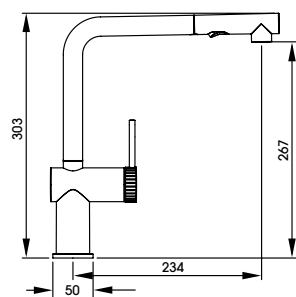


AT2154
Antique Brass

Full specification documents can be found at www.abodedesigns.co.uk

Fraction
Pull Out

AT2156
Chrome



Industrial style with the added functionality of a pull-out spray feature

Neatly hidden, you get the same chic look of the Fraction single lever with the benefit of a spray function. So useful for cleaning tasks

Available in four finishes

Simple and stylish spray button,
in-keeping with this sleek tap design.



AT2157
Brushed Nickel



AT2159
Matt Black



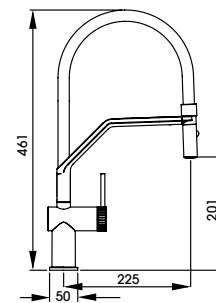
AT2158
Antique Brass

Full specification documents can be
found at www.abodedesigns.co.uk

abode



Image shows the Fraction Pull Out in Matt Black



Fraction
Semi Professional

AT2160
Chrome



A style statement. The contrasting elements of this tap perfectly compliment one another

Features a pull around spray function with magnetic self-locating body and head assembly

Available in a chrome or brushed finish with contrasting black crossbar and silicone hose for a truly industrial feel



AT2161
Brushed Nickel

Full specification documents can be found at www.abodedesigns.co.uk

CONTEMPORARY TAPS

Contemporary taps can be defined by several characteristics; sleek lines, stark shapes, distinctive spout styling, the latest finishes and more. The carefully thought out selection of styles available across our range ensures there is a style to suit every environment.

Complement your kitchen design with the latest finishes to add a showstopping feature tap.



Image shows the Agilis Single Lever in Brushed Brass

SINGLE LEVERS

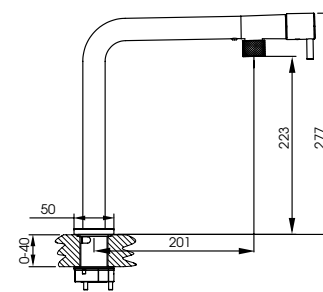
With a variety of benefits, the single lever tap is a popular choice for many, so water wastage is minimised whilst the flow gets to the right temperature. The temperature is easy to adjust with a flick of the wrist and several sleek and streamlined designs, including top lever styles are available.



Image shows the Coniq S Single Lever in Polished Copper



Image shows the Agilis Single Lever in Black & Brass



Agilis
Single Lever

AT2184
Chrome



abode
distinctly

With innovative upfront control, Agilis makes for improved practicality and ease of use.
Distinctly Agile

Flick on /off with swipe of the hand – ideal for limiting touch when hands are dirty

Upfront controls makes reaching the handle easier

On trend colourways with minimalist styling, distinctly different to any other Abode tap

Knurled detail at aerator casing providing a touch of industrial styling

Neoperl Aerator for reduced splashing and water consumption



AT2185
Brushed Nickel



AT2186
Matt Black



AT2187
Black & Brass

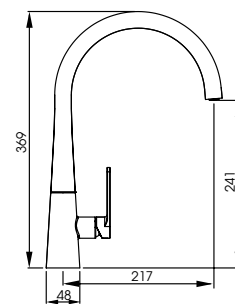


AT2188
Brushed Brass

Full specification documents can be found at www.abodedesigns.co.uk



Image shows the Coniq R Single Lever in Brushed Nickel



Coniq R

AT2115
Chrome



Stylish and contemporary conical style utilising advanced hydroforming manufacturing techniques

Smooth, rotating swan necked spout, with integrated aeration hidden from view

Four hardwearing finishes available, including the durable and striking matt black and polished copper finishes



AT2116
Brushed Nickel

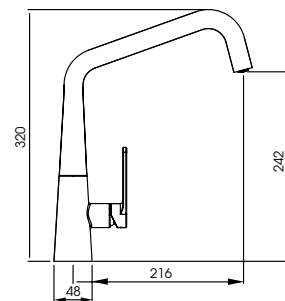


AT2117
Matt Black



AT2118
Polished Copper

Full specification documents can be found at www.abodedesigns.co.uk



Coniq S

AT2113
Black Nickel



abode
distinctly

Strong, bold and brave styling epitomises this design

Using the latest manufacturing techniques, this model integrates a hidden cache aerator into the functional and modern spout design

Available in two luxury finishes – Polished Copper and Black Nickel, offering a mirrored Chrome effect to match plug points and sockets



AT2114
Polished Copper

Full specification documents can be found at www.abodedesigns.co.uk

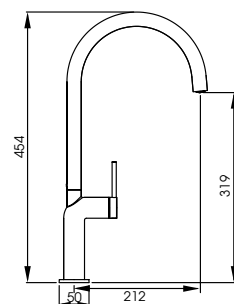
Tubist

AT2127

Brushed Nickel



abode
distinctly



Modern European styling lends everything to the curvaceous and organic form of the Tubist

Using cold start valve technology, the environmentally friendly design will help save heat and wasted energy

Three finishes available: Brushed Nickel, Matt Black & Polished Copper



AT2128

Matt Black



AT2129

Polished Copper

Full specification documents can be found at www.abodedesigns.co.uk

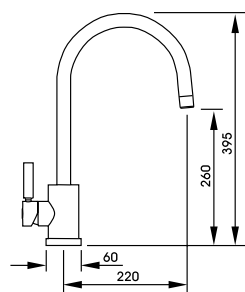
abode



Image shows the Tubist Single Lever in Matt Black

Atlas Single Lever

AT1092
Chrome



Metal construction throughout. You can feel the quality of the Atlas family of products

Single lever for effortless single-handed control

Four finishes available, the Atlas single lever family will fit seamlessly in any kitchen design



AT1093
Brushed Nickel



AT2101
Matt Black



AT2102
Brushed Brass

Full specification documents can be found at www.abodedesigns.co.uk

abode

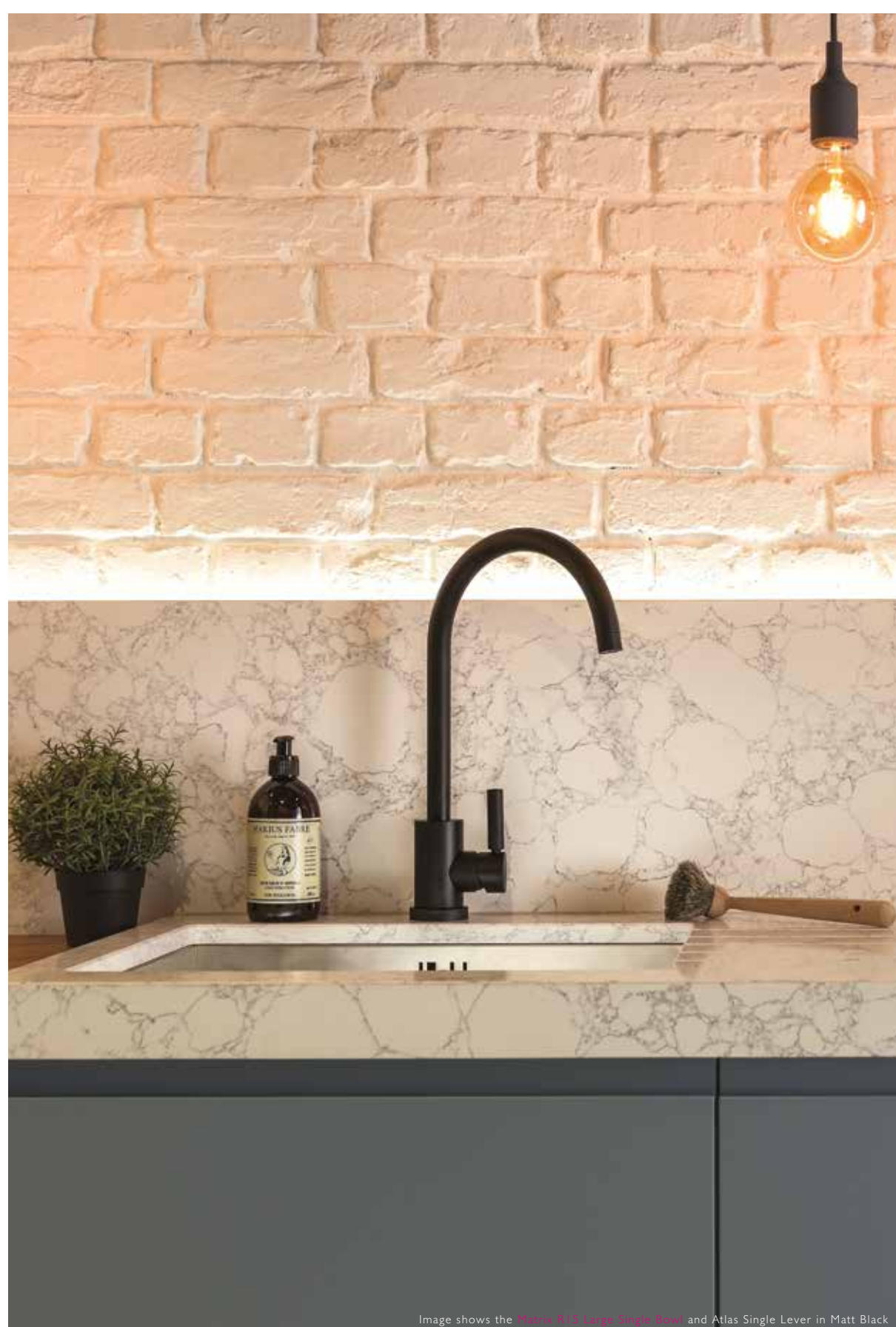
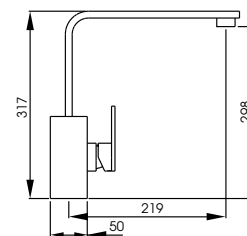


Image shows the [Manna R15 Large Single Bowl](#) and Atlas Single Lever in Matt Black



New Media
Single Lever

AT1181
Brushed Nickel



Bold and contemporary styling

Smooth, rotating flat planed spout with large square base and minimalist handle design

Three finishes available, including the durable and striking, powder coated matt black finish



AT1180
Chrome

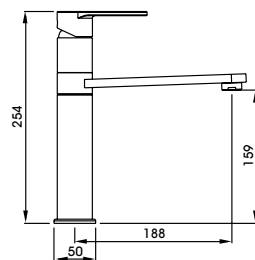


AT1182
Matt Black

Full specification documents can be found at www.abodedesigns.co.uk

Prime
Single Lever

AT1254
Chrome



Modern European styling lends to the curvaceous and organic form of the Prime

Unique handle for complete ease of use and control of the water flow and temperature

Three finishes available;
chrome, brushed nickel and the new matt black finish



Subtle
Chrome
detailing



AT1255
Brushed Nickel

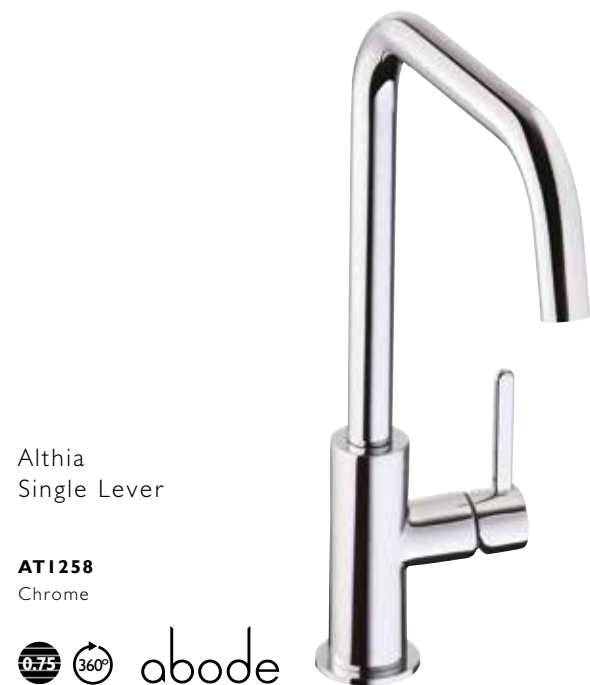


AT2104
Matt Black

Full specification documents can be found at www.abodedesigns.co.uk

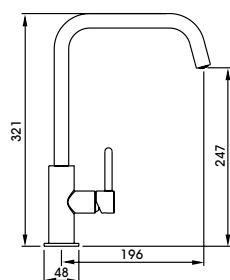


Image shows the Denton and Prime Single Lever in Matt Black



Althia
Single Lever

AT1258
Chrome



Sleek contoured spout boasting a simple yet elegant design

Slim single lever handle makes it easy to use with the use of one finger to control water flow and temperature

Available in 6 finishes, find the perfect finishing touch for your design with the Althia every time



AT1259
Brushed Nickel



AT1269
Graphite



AT1270
Matt Black



AT1272
Urban Copper

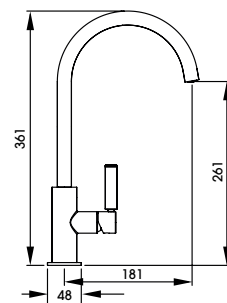


AT2103
Brushed Brass

Full specification documents can be found at www.abodedesigns.co.uk



Image shows the Xcite Single Bowl in Black Metallic Granite and Althia Single Lever in Brushed Brass



Globe
Single Lever

AT2146
Chrome



abode

Perfectly in proportion. The slim body and sleek swan spout
are the perfect combination

Discreet hot and cold indicators

Available in four finishes to perfectly compliment an array of
kitchen designs



AT2147
Brushed Nickel

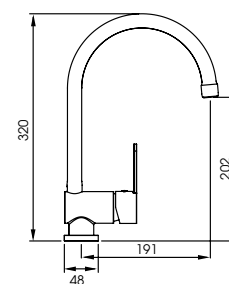


AT2149
Matt Black



AT2148
Brushed Brass

Full specification documents can be found at www.abodedesigns.co.uk



Czar
Single Lever

AT1241
Chrome



abode

The swan neck spout of the Czar gives it an elegant and contemporary design

Achieve precision water control at the touch of a single lever

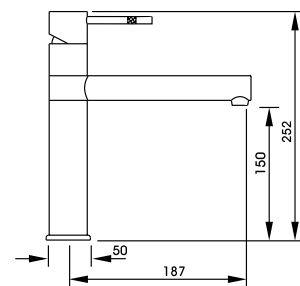
An affordable and stylish option



Hydrus Single Lever

AT1088
Chrome

AT1089
Brushed Nickel



Effortlessly control water flow and temperature with this sleek top lever tap

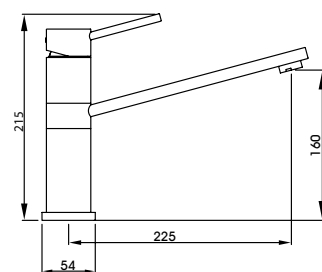
Featuring etched knurling detail on the handle, allowing for better grip but also adding attractive detail



Specto Single Lever

AT1224
Chrome

AT1225
Brushed Nickel



Subtle sweeping design with soft lines and flat planes

Single handed control at the flick of a wrist

Standing at 160mm the Specto is great for compact kitchens with a smaller sink where space is at a premium



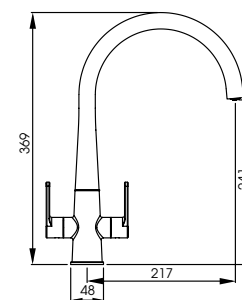
Image shows the Hydrus Single Lever in Chrome

MONOBLOCS

A monobloc allows for complete symmetry for some of the most elegant tap designs.

Function and design are perfectly balanced in this range. We are confident you'll find the perfect finishing touch to your kitchen with an Abode monobloc mixer.





Coniq R

AT2123
Chrome



Stylish and contemporary conical style utilising advanced hydroforming manufacturing techniques

Smooth, rotating swan necked spout, with integrated aeration hidden from view with a cache aerator

Four hardwearing finishes available, including the durable and striking matt black and polished copper finishes



AT2124
Brushed Nickel



AT2125
Matt Black



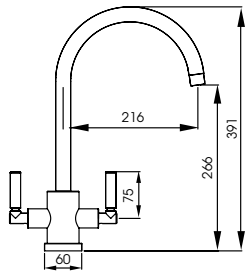
AT2126
Polished Copper

Full specification documents can be found at www.abodedesigns.co.uk

Seeing is believing when it comes to the Atlas family. This best selling, sturdy monobloc has a brass construction so you can immediately appreciate the amount of material and craftsmanship that's gone into its design.

Atlas
Monobloc

AT1053
Chrome



A combination of sophisticated modern styling and engineering excellence. The level of detail makes for a truly inspiring design to suit any kitchen style

Style, maximum performance and quality assurance embodied

This popular model is also available as an Aquifier Filter tap. See page 256 for details



AT1054
Brushed Nickel



AT2097
Matt Black



AT2096
Brushed Brass

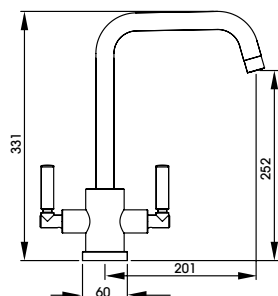
Full specification documents can be found at www.abodedesigns.co.uk



Image shows the Belfast Ceramic Sink and Atlas Monobloc in Matt Black

Atlas
Quad

AT2166
Chrome



A quad spout addition to our best selling Atlas monobloc family

This sturdy monobloc has a solid brass construction, you can immediately appreciate the amount of material and craftsmanship that's gone into it's design

Style, performance and maximum quality assurance embodied

Opt for this quad spout version in one of four available finishes to add a serious style statement to your kitchen design



AT2167
Brushed Nickel



AT2169
Matt Black



AT2168
Brushed Brass

Full specification documents can be found at www.abodedesigns.co.uk

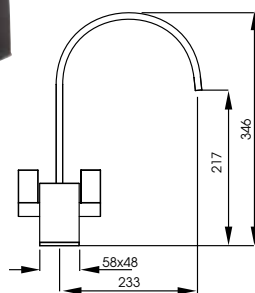
abode



Image shows the GR15 1.0 bowl in Black Metallic Granite and Atlas Quad in Brushed Nickel

Atik
Monobloc

ATI 193
Matt Black



Bold and contemporary styling. Pair this bold tap with a traditional styled sink for a truly distinctive look

Achieve a unique look with the slimline squared swan spout

Three finishes available, including the durable and striking, powder coated matt black finish



ATI 148
Chrome



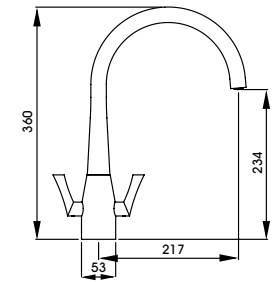
ATI 149
Brushed Nickel

Full specification documents can be found at www.abodedesigns.co.uk

abode



Image shows the Belfast Ceramic and Atik Monobloc in Matt Black



Fluid Monobloc

AT1169
Chrome

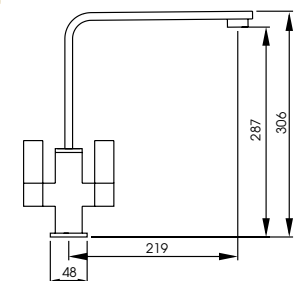
AT1170
Brushed Nickel



The name says it all. Fluidity of the design lines is the essence of this collection

Distinctive handle styling to add eye-catching detail to your kitchen design

Equally at home in classic or contemporary kitchen interiors alike



Quantic Monobloc

AT2070
Chrome

AT2105
Matt Black

AT2182
Brushed Brass



Contemporary styling perfectly blending round and square forms

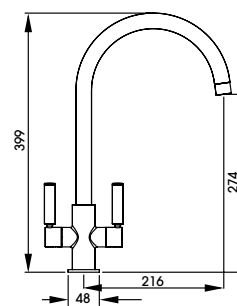
Classic monobloc design which is easy to operate with a simple movement.

The tap spout will smoothly swivel between sink bowls

Full specification documents can be found at www.abodedesigns.co.uk



Image shows the Milford 1.5 Bowl and Globe Monobloc in Brushed Brass



Globe
Monobloc

AT2138
Chrome



abode

Perfectly balanced. A classic looking monobloc design sure to provide the perfect finishing touch in a variety of kitchen designs

Contemporary handle styling with hot and cold indicators on the top of each handle

Choose from four of our most popular finishes



AT2139
Brushed Nickel



AT2141
Matt Black

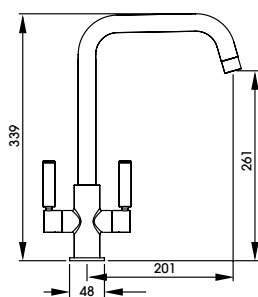


AT2140
Brushed Brass

Full specification documents can be found at www.abodedesigns.co.uk

Globe Quad
Monobloc

AT2142
Chrome



A contemporary twist. The addition of a quad spout gives this sleek design a modern edge

Contemporary handle styling with hot and cold indicators on the top of each handle

Four finishes to choose from



AT2143
Brushed Nickel



AT2145
Matt Black



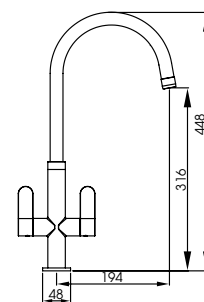
AT2144
Brushed Brass

Full specification documents can be found at www.abodedesigns.co.uk

abode



Image shows the Globe Quad Monobloc in Matt Black



Linear Nero
Monobloc

AT1184
Chrome & Black



abode

Bold and contemporary styling with a tall swan spout for
great practicality

Durable and striking powder coated matt black detail contrasting
luxurious chrome

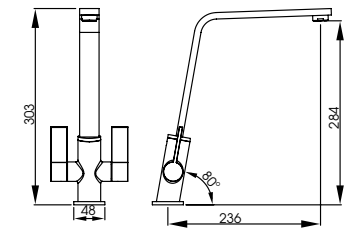
Full specification documents can be found at www.abodedesigns.co.uk



Linear Flair Monobloc

AT1220
Chrome

AT1221
Brushed Nickel



The 80-degree angle on the tap body results in a perfectly sloped design

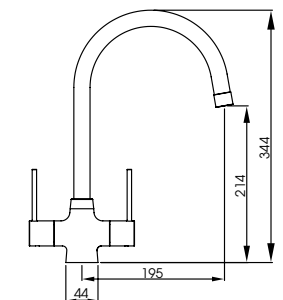
Contemporary spout and handle styling makes for a striking addition to any modern kitchen



Nexa Monobloc

AT1222
Chrome

AT1223
Brushed Nickel



Slim, long-stem levers and a swan style spout make the Nexa elegant and easy to operate

Affordable, yet distinct design

Full specification documents can be found at www.abodedesigns.co.uk

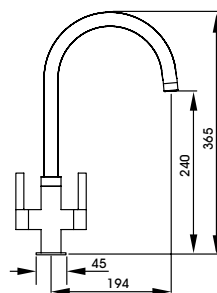
Pico
Monobloc

AT1226
Chrome



360°

abode



Elegantly styled monobloc with discreet hot and cold indicators on the handles

Four finishes available for design matching to key kitchen accessories/appliances

Pico features a simple yet stunning handle design to compliment the overall look



AT1227
Brushed Nickel



AT2095
Matt Black



AT2045
Brushed Brass

Full specification documents
can be found at
www.abodedesigns.co.uk

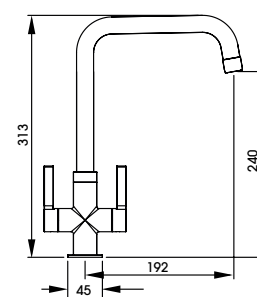
abode



Image shows the Oriel 1.5 Bowl in Black Granite and Pico Monobloc in Matt Black



Image shows the Milford 1.5 Bowl and Pico Quad in Brushed Brass



Pico
Quad

AT2134
Chrome



abode

Quad spout version of the popular long standing Pico range
Keeping the key design details of Pico, with the contemporary lift
the quad spout options gives
Four finishes available to perfectly complement key kitchen
accessories/appliances



AT2135
Brushed Nickel



AT2137
Matt Black



AT2136
Brushed Brass

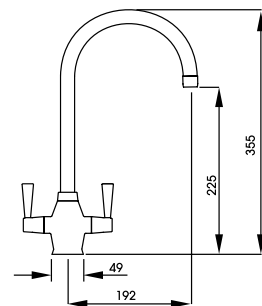
Full specification documents can be found at www.abodedesigns.co.uk



Astral Monobloc

AT1156
Chrome

AT1157
Brushed Nickel



Classic styling suitable for contemporary and traditional settings alike

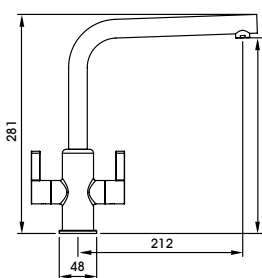
The distinctive body of the Astral is framed by the elegant swan spout and tapered handles



Althia Monobloc

AT1256
Chrome

AT1257
Brushed Nickel



The blend of square and round forms gives the Althia its distinctive edge

Refined handle styling for optimum ease of use

Pair with a sink with distinctive drainer detailing for a striking effect



Image shows the Astral Monobloc in Brushed Nickel

PULL OUT & PROFESSIONAL TAPS

If you have the water pressure capability, a pull-out tap should not be overlooked. The cost may be slightly more up-front than a standard tap but the benefits over time will more than justify this.

The addition of a pull-out tap to the kitchen will make daily tasks such as pan filling, dish rinsing, food preparation and sink bowl cleaning that much simpler. Ideal for the keen cook or busy family household.

The range consists of two different types of pull out tap; a true pull out and a pull around tap. On a true pull out, the hose is discreetly hidden inside the tap and allows the user to pull the hose out to its full set length. A pull around tends to be a professional style tap in which the hose is visible on the external of the tap and held in a handspray holder located on the end of the extension bar.

In this range you'll find some products with an additional spray function which is operated by pressing a button on the end of the spout. This button simply changes the flow of the water from the standard to a powerful spray.

Our range of professional taps offer the manoeuvrability and features detailed above whilst being a statement piece in the kitchen.

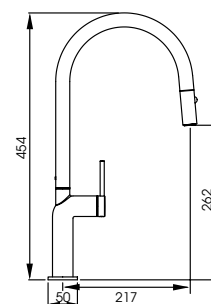


Image shows the Studio Compact and HEX Single Lever Pull Out in Brushed Nickel

See our stainless steel range for pull out and professional taps constructed from solid stainless steel.



Image shows the Tubist Single Lever Pull Out in Matt Black



Tubist Single Lever
with pull out spray

AT2130
Brushed Nickel



Modern European styling lends everything to the curvaceous and organic form of Tubist

Using cold start valve technology, the environmentally friendly design will help save heat and wasted energy

Integrated pull down spray function, offering full or spray water functions

Three finishes available: Brushed Nickel, Matt Black & Polished Copper



AT2131
Matt Black

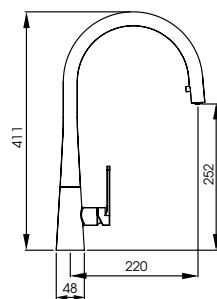


AT132
Polished Copper

Full specification documents can be found at www.abodedesigns.co.uk

Coniq R
Single Lever Pull Out

AT2119
Chrome



Stylish and contemporary conical style utilising advanced hydroforming manufacturing techniques

Smooth, rotating swan necked spout with integrated pull down weighted spray, with integrated aeration hidden that disappears when put back into place

Four hardwearing finishes available, including the durable and striking matt black and polished copper finishes



AT2120
Brushed Nickel



AT2121
Matt Black



AT2122
Polished Copper

Full specification documents can be found at www.abodedesigns.co.uk

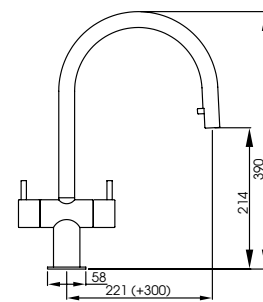
abode



Image shows the Matrix R0 Large Single Main Bowl and Coniq R Single Lever Pull Out in Brushed Nickel



Image shows the Hesta Monobloc Pull Out in Brushed Nickel



Hesta Monobloc
Pull Out

AT1205
Chrome



abode
distinctly

Contemporary monobloc with hidden functionality, allowing easy
cleaning of those hard to reach areas

Pull out formed from a grey Nylon hose. Set the pullout length you
require using the counterbalance weight under the sink



Discreet pull out
hose provides
practicality without
detracting from the
minimal design

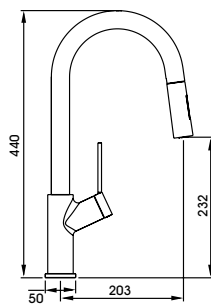


AT1206
Brushed Nickel

Full specification documents can be found at www.abodedesigns.co.uk

Virtue Nero Pull Out
with spray

AT1244
Chrome



The contrasting black flexible spout makes it the perfect choice
for coordinating with other elements in the kitchen

With the added functionality of a pull-out hose with spray for
those harder to reach places

The unique 'V' shaped body and handle design of the Virtue
tap gives it a truly iconic look

Full specification documents can be found at www.abodedesigns.co.uk

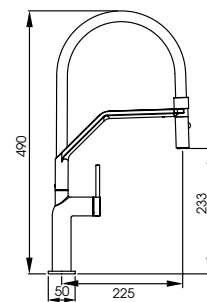
abode



Image shows the Matrix GR15 2 Bowl In Black Metallic Granite and Virtue Nero Pull Out



Image shows the Tubist Professional in Matt Black



Tubist Professional
pull around with
detachable spray

AT2133
Matt Black



Taking its design cues from the Tubist range, the Professional tap offers greater versatility with a magnetic snap back control for the spout

Using cold start technology, this environmentally design will help save wasted heat and energy

Pull around hose feature, with spray and full flow water features

Durable silicone hose cover in black

Available in stylish and hardwearing matt black finish



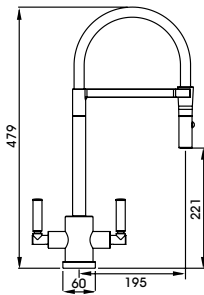
Full specification documents can be found at www.abodedesigns.co.uk

In keeping with the solid geometric form of the Atlas collection, the professional range have the added functionality of a pull around spray.



Atlas Professional Monobloc pull around with spray

AT1247 Chrome **AT1248** Brushed Nickel



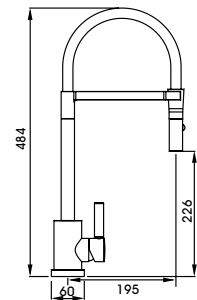
Perfectly complement the décor of your kitchen with chrome or brushed nickel options with a black hose

Distinctive monobloc option



Atlas Professional Single Lever pull around with spray

AT1249 Chrome **AT1250** Brushed Nickel **AT2100** Matt Black



As well as the finish options above, you can also choose from a full matt black option with black hose

Simple to operate, energy efficient single lever option

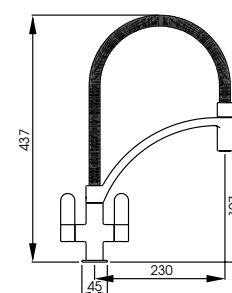
Full specification documents can be found at www.abodedesigns.co.uk



Image shows the Stainless Steel Belfast and Atlas Professional Single Lever in Matt Black



Image shows the Genio Semi-Professional Monobloc in Chrome



Genio Semi-Professional Monobloc pull around

AT2071
Chrome



360°

abode
distinctly

Semi-professional style mixer with detachable pull around spout feature, perfect for rinsing down and filling pans

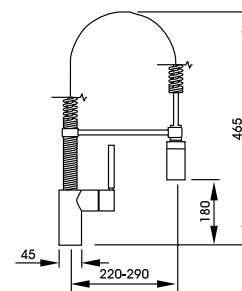
Metal flexible hose for a truly professional look

Now available in a striking power coated matt black finish



AT2183
Matt Black

Full specification documents can be found at www.abodedesigns.co.uk



Ratio Professional
pull out

AT1115
Chrome



abode
distinctly

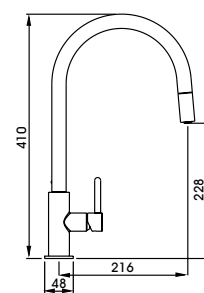
True functionality for ultimate flexibility, making cleaning and rinsing
chores simple

Maintain the look and feel of a professional tap whilst retaining a
relatively compact size

Full specification documents can be found at www.abodedesigns.co.uk



Image shows the Connekt Single Bowl and Althia Pull Out in Brushed Nickel



Althia
Single Lever Pull Out

AT1260
Chrome



The tall swan neck spout of the Althia pull out provides optimum flexibility, allowing you to reach into the corners of even the largest of sinks

Pull out formed from a grey Nylon hose. Set the pullout length you require using the counterbalance weight under the sink



The discreet pull out allows for a minimal design that maximises on both performance and style

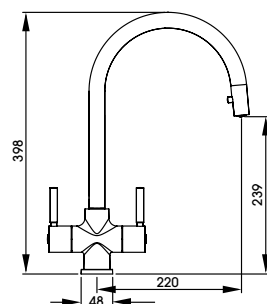


AT1261
Brushed Nickel

Full specification documents can be found at www.abodedesigns.co.uk

Zest
Monobloc Pull Out

AT2164
Chrome



A balanced monobloc design with the added benefit of
inbuilt functionality

Zest has a hidden pull out. The discreet hose is hidden
away and located by a small toggle at the back of the spout
maintaining the design lines of the product

The perfect helping hand for common rinsing tasks



The discreet pull
out allows for a
minimal design
that maximises on
both performance
and style



AT2165
Brushed Nickel

Full specification documents can be found at www.abodedesigns.co.uk

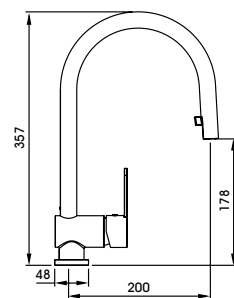
abode



Image shows the Neron 1.0 Bowl and Zest Monobloc Pull Out in Chrome

Czar
Single Lever Pull Out

AT1240
Chrome



This simple single lever design features a discreet grey Nylon pull out hose. The pull out length can be set as required using the counterbalance weight under the sink

Smooth and effortless single lever control

Supplied complete with flexible tail pipes for fast and simple fitting



Discreet pull out hose provides practicality without detracting from the minimal design

Full specification documents can be found at www.abodedesigns.co.uk

abode



Image shows the Czar Single Lever Pull Out in Chrome



Image shows the Globe Professional in Brushed Nickel



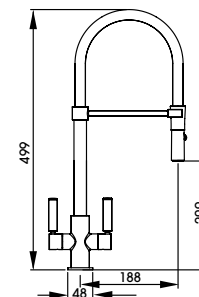
Globe Professional

AT2150
Chrome

AT2151
Brushed Nickel



abode



The same slim and sleek Globe body with added functionality

Pull around hose with spray feature integrated

Contrasting, durable silicone hose cover

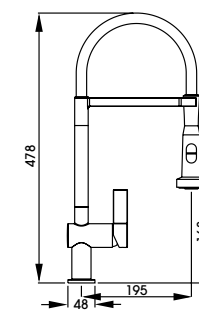


Ophelia Professional
pull around with spray

AT2074
Chrome



abode



Features pull around, switchable spray function, perfect for rinsing and cleaning tasks

Professional style, an ideal kitchen addition for the keen cook or baker

Ceramic disc valve technology for ultra smooth water flow and temperature control

Full specification documents can be found at www.abodedesigns.co.uk

STAINLESS STEEL TAPS

Stainless steel as a material has several well loved benefits including:

It is a closer match to stainless steel sinks and appliances

The material itself is 100% recyclable

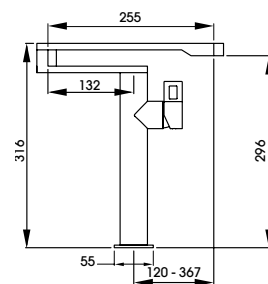
Stainless steel taps have no coating, they are just polished and brushed

It is more durable and less likely to scratch, small scratches can be brushed out

Stainless steel is a naturally hygienic material



Image shows the Stalto Professional



Axial
Pot Filler

AT2078
Stainless Steel



abode
distinctly

Pot filler style functionality in a simple to fit deck mounted format

Easily reach each corner of the sink or fill large pans from the worktop rather than in the bowl due to multiple swiveling spout joints

Solid 304 stainless steel construction

Unique, innovative and practical design

Delivers hot, cold & mixed temperature water

The Axial can be deck or sink mounted

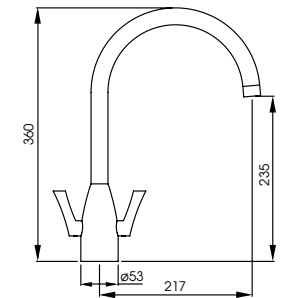


Full specification documents
can be found at
www.abodedesigns.co.uk



Aero Monobloc

AT2075
Stainless Steel



Beautiful organic curves created from solid stainless steel this elegant and durable, monobloc can sit in modern and traditional kitchens alike

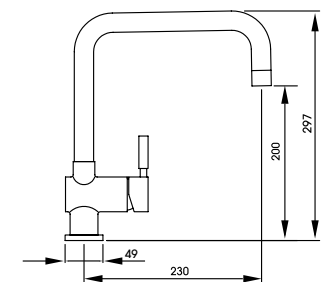
Quarter turn handle action for precise flow control

Anti-splash spout design



Propus Single Lever

AT1070
Stainless Steel



Architectural inspired design

Smooth single lever control

A clean lined, contemporary styled mixer tap. The perfect pairing for any stainless steel or granite sink

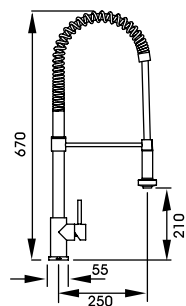
Stalto Professional
pull out with spray

AT1199

Stainless Steel



abode
distinctly



Standing tall at 670mm, the Stalto is a truly showstopping piece in any kitchen

Coiled construction with a balanced spray head and integrated spray button

The ultimate choice for the keen cook or aspiring chef

Full specification documents can be found at www.abodedesigns.co.uk

abode



Image shows the Stalto Professional

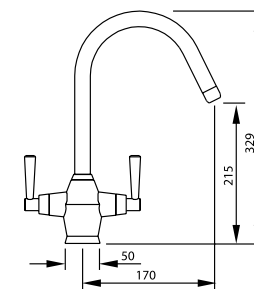
TAPS

STAINLESS STEEL 231



Taura Monobloc

ATI 137
Stainless Steel



An elegant design featuring soft, smooth curves

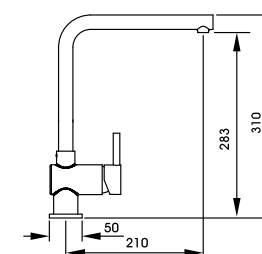
A traditional style which boasts the hygienic and practical properties of stainless steel

Discreet hot and cold indicators on the handle ends



Quala Single Lever

ATI 198
Stainless Steel



Distinctive L shaped spout design for a contemporary, minimalist look

Smooth single lever control

Would sit perfectly with any style of sink

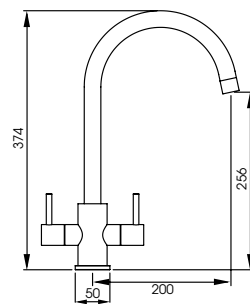
Full specification documents can be found at www.abodedesigns.co.uk

Focal
Monobloc

AT2177
Stainless Steel



abode



Balanced, contemporary monobloc styling with the well-loved benefits of stainless steel

Ceramic disk valve technology for super smooth flow and temperature control

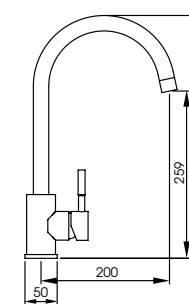
Fitted with an anti-splash aerator for a premium finish

Sway
Single Lever

AT2178
Stainless Steel



abode



Contemporary side single lever styling featuring soft, smooth curves

A sleek swan neck design which boasts all the benefits of stainless steel alongside

Ceramic cartridge technology for smooth flow and temperature control

TRADITIONAL TAPS

Inspired by the classic era of British design and manufacturing, this refined selection of distinctive traditional mixertaps will bring truly classic style to your kitchen.

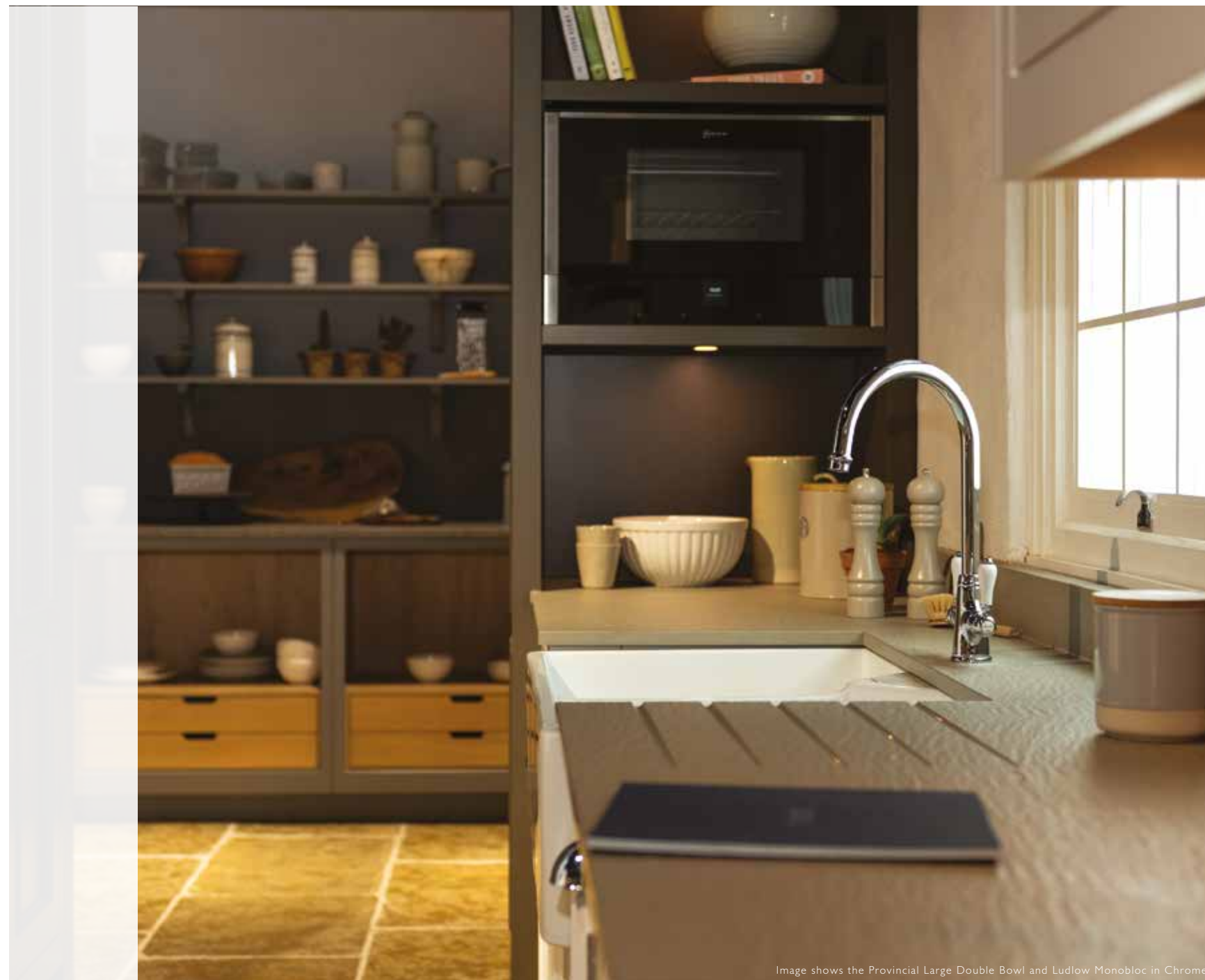
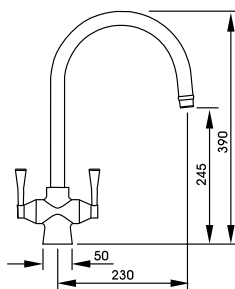


Image shows the Provincial Large Double Bowl and Ludlow Monobloc in Chrome

Gosford
Monobloc

AT1019
Chrome



A tall sweeping swan neck spout and smooth tapered handles fuse with the symmetrical body to create a tap of modern-day elegance

Traditional style hot and cold indicators on the top of the handles

This model is also available as an Aquifer Filter tap.
See page 258 for details



AT1020
Brushed Nickel



AT1022
Antique Brass

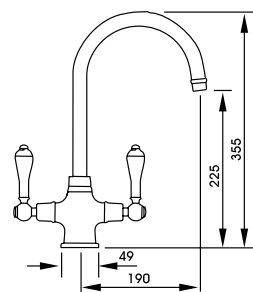
Full specification documents can be found at www.abodedesigns.co.uk



Image shows the Gosford Monobloc in Antique Brass

Ludlow
Monobloc

AT1026
Chrome



Timeless classic Victorian inspired design

Ceramic style handles with traditional hot and cold indicators
on the end of each handle

A balanced combination of age-old design inspiration with
modern engineering technology



AT1028
Antique Brass



AT1216
Brushed Nickel

Full specification documents can be
found at www.abodedesigns.co.uk



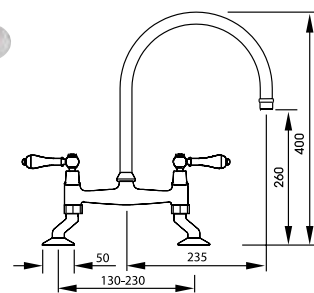
Image shows the Ludlow Monobloc in Antique Brass

Ludlow
Bridge

AT1029
Chrome



abode



Timeless classic Victorian inspired design

Ceramic style handles with traditional hot and cold indicators
on the end/top of each handle

A balanced combination of age-old values with modern
engineering technology



AT1031
Antique Brass



AT1217
Brushed Nickel

Full specification documents can be
found at www.abodedesigns.co.uk

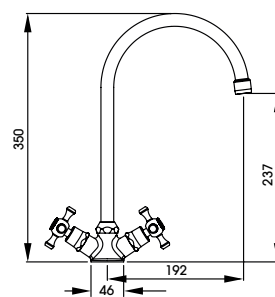
abode



Image shows the Sandon Large Single Bowl and Ludlow Bridge in Antique Brass



Image shows the Milford 1.5 Bowl Ceramic and Burford Monobloc in Antique Brass



Burford
Monobloc

AT2170
Chrome



abode

Inject simple, yet sophisticated traditional design into the kitchen with the Burford

The handles feature quarter turn ceramic disk valves for ease of use

Traditional hot and cold indicators feature on the cross handles

Available in three finishes including the popular Antique Brass



AT2171
Brushed Nickel



AT2172
Antique Brass

Full specification documents can be found at www.abodedesigns.co.uk

A classic continental design

Originating from France, the Melford's farmhouse styling proves a successful fusion of provincial design and modern engineering technology

Finished off with traditional hot and cold indicators on the handles and knurling detail on the spout

Revolve aerator supplied as standard



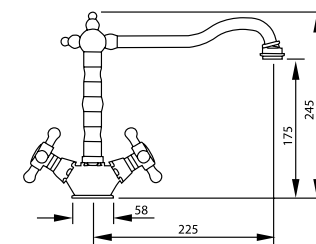
AT1041
Chrome



AT1043
Antique Brass



AT1044
Brushed Nickel



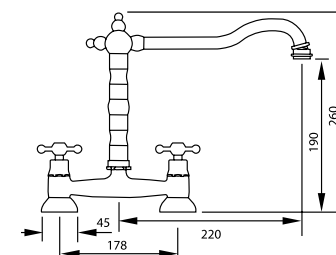
AT1045
Chrome



AT1047
Antique Brass



AT1048
Brushed Nickel



Full specification documents can be found at www.abodedesigns.co.uk

TAPS

TRADITIONAL 247

The products in this bespoke collection boast classic styles and premium quality through unique manufacturing processes.

abode

BROMPTON MONOBLOC

[illegible]

13012 6 months
1314.00



AT3014 Printed
E348-00



10. $\frac{1}{2}$ of 100 = 50

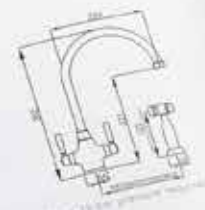


AT3013 Chrome
2457.00



AT3015 Power
1495.00

AT3015 PowerLite
£495.00



Small diagram showing a rectangular box labeled "L-10" with dimensions 10 x 10 x 10.



TAPS

TRADITIONAL **249**

abode



Astbury Bridge
in Chrome



Bayenne Single Lever
in Chrome



Brompton 3 Part Mixer
in Chrome

The Astbury Collection

Features real ceramic handles to provide the optimum, premium finishing touch to your traditional kitchen design

Neoperl® Anti-Splash Aerators provide a smooth water supply

Ceramic Disc Valve Cartridge technology for effortless use and Pre-fitted Flexi Tail Pipes saves on fitting time

Handbrushed PVD Coating ensures optimum longevity of the finish



Models:

Single Lever
Monobloc (shown above)
Bridge
3 Part Mixer
3 Part Mixer with Handspray

Finishes:



CHROME



PEWTER



FORGED
BRASS

The Bayenne Collection

This premium range has real substance whilst maintaining a low lead brass construction

Neoperl® Anti-Splash Aerators provide a smooth water supply

Ceramic Disc Valve Cartridge technology for effortless use and Pre-fitted Flexi Tail Pipes saves on fitting time

All products available in Century Copper finish



Models:

Single Lever
Monobloc
Bridge (shown above)
3 Part Mixer
3 Part Mixer with Handspray

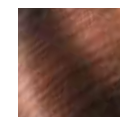
Finishes:



CHROME



PEWTER



CENTURY
COPPER

The Brompton Collection

This simple elegant collection is the perfect addition to a wide range of kitchen styles. If you are looking for premium quality and classic design, opt for the Brompton range

Neoperl® Anti-Splash Aerators provide a smooth water supply

Ceramic Disc Valve Cartridge technology for effortless use and Pre-fitted Flexi Tail Pipes saves on fitting time



Models:

Single Lever
Monobloc
Bridge
3 Part Mixer (shown above)
3 Part Mixer with Handspray

Finishes:



CHROME



PEWTER

AQUIFIER™ WATER FILTER TAPS

The Abode Aquifier range features popular designs from our tap range as well as exclusive designs with the added benefit of a dedicated filtered water function – straight from the tap.



Image shows the Belfast and Atlas Aquifier in Matt Black

WHAT ARE THE BENEFITS OF A WATER FILTER TAP?



WATER QUALITY: An Aquifier tap or Swich device filters particulates from water, reduces the taste and odour of chlorine and reduces hardness from the water.



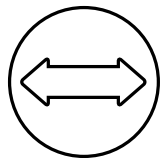
HEALTH: Having filtered cold water on tap will hopefully encourage the consumption of more water. Fill a reusable water bottle each day directly from the tap.



ENVIRONMENT: By removing the need for bottled mineral water, every home with an Aquifier product is doing their bit for the environment by reducing single use plastic consumption.



COST: If bottled mineral water is a frequent purchase in your household you can save considerable amounts each year by switching to an Aquifier or Swich product.



SPACE SAVING: If you previously had a water filtration jug or bought bottled water, just think how much space you can free up in the fridge.



APPLIANCE HEALTH: If you live in an area with particularly hard water you will notice that the kettle suffers as a result of the limescale build up over time. Fill your kettle with filtered water and prolong its life.

Find out more on the website: <https://www.abodedesigns.co.uk/faqs/aquifier>

HOW DOES AN AQUIFIER PRODUCT WORK?



WHY IS IT IMPORTANT TO KEEP UP WITH REPLACEMENT FILTERS?

It is simple to maintain your filter, it sits in a bracket either at the back or on the side of the inside of the base cabinet below the sink. It is easy for anyone to replace using our simple, fast and secure 'SafeLock' system.

We offer a dedicated filter reminder service – we'll send you a reminder by email or post each time your filter is due for renewal.

Filters are easy to buy as singles or packs from www.abode-shop.co.uk when the time comes to replace.

It's important to change the filter at the recommended intervals to ensure the consistency of the supply of fresh, filtered drinking water.

USAGE: The capacity of the filter units for Aquifier and Swich products vary, these range between 1000L and 6000L (dependent on incoming water quality and usage).

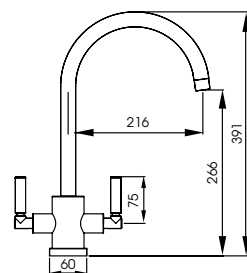
We have both Classic and High Resin filters available, specifically tailored for use in soft water or hard water areas respectively.

If you live in a soft water area the filter will be used up much slower than one in a hard water area (based on a standard average usage).

We recommend that our filters are changed every 6 months on average. If you live in a hard water area or have a higher filtered water consumption, replacements every 3 months may be beneficial.

Atlas
Aquifier

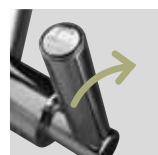
AT2003
Chrome



Maintain the sleek and popular style of the Atlas tap with the addition of filtered cold water

Cold, hot and pure indicators on the top of the handles

Four finishes available, achieve the perfect finishing touch with the benefit of added functionality



Push the cold lever back for filtered water



Full filter starter kit supplied



AT2004
Brushed Nickel



AT2099
Matt Black



AT2098
Brushed Brass

Full specification documents can be found at www.abodedesigns.co.uk
For replacement filters, please visit www.abode-shop.co.uk



Image shows the Atlas Aquifier in Chrome

TAPS

WATER FILTER 257

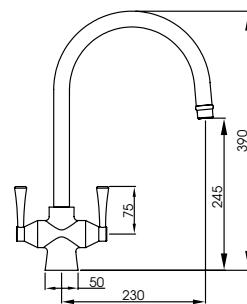


Gosford
Aquifier

AT2005
Chrome



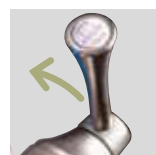
abode
distinctly



The classic Gosford design attributes are maintained but combined with the added benefit of Abode's unique integrated water filtration technology

The flow of hot, cold and filtered water goes through the same spout and using just two handles

Traditionally styled hot, cold and pure indicators on top of the handles



Push the cold
lever back for
filtered water



Full filter starter kit
supplied



AT2006
Brushed Nickel



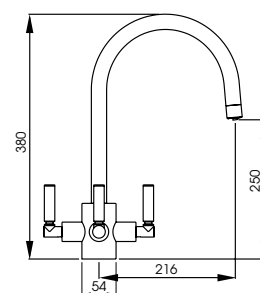
TAPS

WATER FILTER 259

Image shows the Gosford Monobloc in Brushed Nickel



Image shows the Sandon 1.5 Bowl and Orcus 3 Way Aquifier in Chrome

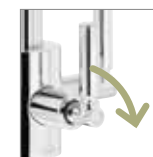


Orcus 3 Way Aquifier

AT2072
Chrome



- Dedicated hot, cold and filter control handles
(filter control at the front of the tap)
- Dedicated filtered water pathway (doesn't share with hot & cold)
- Anti-splash spout design



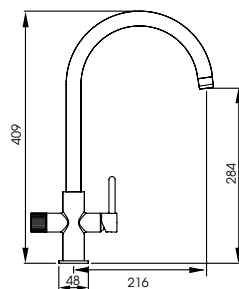
Turn the middle
lever clockwise for
filtered water



Full filter starter
kit supplied

Puria
Aquifier

AT2042
Chrome



Abode lead the market in innovative filter water taps and the latest addition to the range is no exception

It has a single lever cold start valve offering smooth flow and temperature control. Filtered drinking water is delivered through a separate channel delivering refreshingly fresh filtered water.

Modern engineering makes this probably the slimmest filter tap available today

Tall swan spout, with in built aeration keep filtered water and potable supplies separate



Rotate the
filter lever
back for
filtered water



Full filter starter kit
supplied



AT2043
Brushed Nickel



AT2044
Matt Black

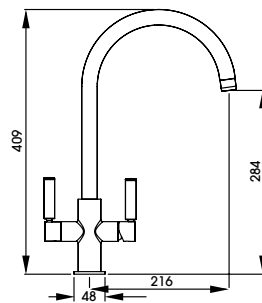
Full specification documents can be found at www.abodedesigns.co.uk
For replacement filters, please visit www.abode-shop.co.uk



Image shows the Puria Aquifier in Matt Black

Globe
Aquifier

AT2173
Chrome



Enjoy the design of the Globe monobloc with the addition of filtered cold water when you opt for this Aquifier tap

Filtered water indicator on the top of the left handle and tap body

Four finishes available, achieve the perfect finishing touch with the benefit of functionality built in



Full filter starter kit
supplied



AT2174
Brushed Nickel



AT2176
Matt Black



AT2175
Brushed Brass

Full specification documents can be found at www.abodedesigns.co.uk
For replacement filters, please visit www.abode-shop.co.uk

TAPS

WATER FILTER 265



Image shows the Dune in Frost White Granite and Globe Aquifier in Chrome



Introducing (switch)

*A revolution in filtered
water technology*



HOW DOES A SWITCH PRODUCT WORK?

Convert **ANY** kitchen tap to one which
delivers filtered water as well as the
standard cold water supply

The easy way to get filtered water from any
style of tap

Simple to install either through the worktop,
or any standard sink 35mm tap hole or even
in the sink cabinet

Easy to use, just turn to divert to the
filtered water function and back again to the
standard cold water supply

Can be installed alongside a new tap or
retro-fit with an existing tap

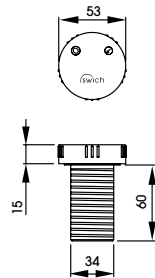
Award winning, unique product design

**MAKE THE SWITCH FROM
BOTTLED WATER,
SAVE MONEY AND THE
ENVIRONMENT**

See our cost saving infographic,
video and supporting information
at www.abodedesigns.co.uk



Swich
Round



[with classic filter]

AT2050

Chrome

AT2051

Brushed Nickel

AT2106

Matt Black

AT2109

Brushed Brass

[with high resin filter
for harder water]

AT2054

Chrome

AT2055

Brushed Nickel

AT2107

Matt Black

AT2110

Brushed Brass



Improve the overall taste and quality of the drinking water from any tap by adding a Swich device

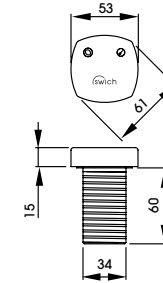
Swich is easy to install and use, simply twist the device to divert the cold water to refreshing, filtered water and back to unfiltered cold water as desired

Choose from two designs and an array of finishes to perfectly complement your tap and kitchen design

To ensure the perfect solution, choose from two filter options. Choose the Classic Filter for soft water areas and the High Resin filter for hard water areas to ensure maximum longevity of the filter



Swich
Square



[with classic filter]

AT2052

Chrome

AT2053

Brushed Nickel

[with high resin filter
for harder water]

AT2056

Chrome

AT2057

Brushed Nickel



Full filter starter kit
supplied with
each switch



HANDSPRAYS AND ACCESSORIES

Handspray Rinse



AT1100
Chrome

AT1101
Brushed Nickel

0.5 min

2.0 max

Axell Handspray Rinse



AT1107
Stainless Steel

0.5 min

2.0 max

Hendon Handspray



AT3040
Chrome

AT3101
Forged Brass

AT3041
Pewter

AT3103
Century Copper

1.0 min

2.0 max

Note: All handsprays should be used in conjunction with a pressure reduction valve (not supplied)

WATER FILTER CARTRIDGES

Aquifier Filter Cartridge



AT2002

Aquifier High Resin Filter Cartridge



AT2040

PROBOIL.2X Filter Cartridge



PT1206

PROBOIL3 Filter Cartridge



PT1024

Swich Classic Filter Cartridge



AT2111

Swich High Resin Filter Cartridge



AT2112

Note: Replacement Aquifer/Swich filter cartridges can be bought from www.abode-shop.co.uk
Replacement Pronteau filter cartridges can be bought from www.pronteau.co.uk


A selection of useful, functional and practical accessories are available from Abode including pull out handsprays in a variety of contemporary and classic styles, flow limiting valves, fast fit tail pipes and spout attachments that bring additional functionality to your mixertap. It's the little things that make the difference.

Flow Control Valve



AT1142
Brass

Tap Support Bracket



AX1011
Stainless Steel

15mm Flow Restriction Valve
4 litres/minute




AB2434
to suit 15mm pipe fittings

3 litres/minute

AB2440
to suit 15mm pipe fittings

2.0

15mm Flow Restriction Valve
6 litres/minute



AT2435
to suit 15mm pipe fittings

2.0

1/2" Showerhead Flow Restriction Valve
6 litres/minute



AT2433
replaces any 1/2" shower hose seal

1.0

AERATORS

Revolve Aerator



A swiveling joint that attaches to your existing spout

AT1060
Revolve Aerator

Jetspray Aerator



AT1140
Chrome Jet Spray

indicates taps suitable for this extra feature

indicates taps suitable for this extra feature



INDEX

SINKS

Acton	70
Aspekt	52
Belfast	42
Connekt	78
Connekt Flushfit	76
Denton	38
Dune	54
Ixis	80
Matrix GR15	34
Matrix R0	16
Matrix R15	20
Matrix R50	24
Mikro	82
Milford	72
Neron	84
Oriel	58
Provincial	44
Sandon	46
Stainless Steel Belfast	28
Studio Compact	30
Trydent	88
Verve	90
Xcite	60
Zero	64

TAPS

Accessories	270
Aerators	271
Agilis	150
Airo	229
Althia	164, 196, 216
Astral	196
Atik	180
Atlas	158, 176, 178, 210, 256
Axial	226
Burford	244
Coniq R	152, 174, 202
Coniq S	154
Czar	168, 220
Fluid	183
Focal	234
Fraction	140, 142, 144
Genio	212
Globe	166, 184, 186, 222, 264
Gosford	238, 258
Handsprays	270
Hesta	204
Hex	132, 134, 136, 138
Hydrus	170
Linear Flair	190
Linear Nero	188
Ludlow	240, 242
Melford	246
New Media	160
Nexa	191
Orcus	260
Ophelia	223
Pico	192, 194
Prime	162
ProBoil.2X	126
Professional 3 IN 1	116
Propure	122, 124
Propus	228
Prostream	112
Prostyle	114
Prothia	106, 108
Protrad	110, 120
Puria	262
Quala	233
Quantic	182
Ratio	214
Specto	170
Stalto	230
Sway	235
Swich	266, 268
Taura	232
Tubist	156, 200, 208
Virtue Nero	206
Warranty & Care	274
Water Filter Cartridges	270
Zest	218

WARRANTY

COMPREHENSIVE WARRANTY

In the unlikely event that you should experience any defect in the materials or workmanship of your new

- Abode sink within 10 years of purchase
- Abode tap within 5 years of purchase
- ProBoil boiler within 2 years of purchase

The purchaser's sole remedy shall be the replacement (at the manufacturer's discretion) of all or any part of the product that is defective.

For the tap, all working parts and valves are guaranteed for a period of 5 years from date of purchase. Decorative surface finishes and O-rings are guaranteed for 1 year from the date of purchase provided that our advice concerning care has been observed and no scouring agents have been used.

This is provided that the sink, mixer or tap has been used for normal domestic purposes and that the care, installation and maintenance instructions have been observed. The warranty extends to the original purchaser only.

CUSTOMER CARE

CAUTION

Repeated release of boiling hot water directly into coloured sinks can in extreme cases cause crazing and even cracking. Therefore we recommend great care is taken not to release the water directly on to the sink surface at full temperature for extended periods.

WATER REGULATIONS

All products should be installed in accordance with Local Water Bye Laws.

Visit www.abodedesigns.co.uk to search all products with a current WRAS approval.

Our ProBoil boilers store water at a maximum temperature of 98°C to conform to UK legislative limits. Spout exit temperatures will vary according to environmental changes and usage patterns.

TECHNICAL SUPPORT

Choosing the right mixer tap and sink for your home is an important choice as the tap is not only the most architectural item in your kitchen, but also the most used.

Think about the style you require, the ease of use you are looking for, and then consider your existing water supply and the water pressure available to you. If you have any questions with regards to whether a tap will be suitable for your application, please contact our technical support team or visit our website www.abodedesigns.co.uk for more details.

For sinks, consider the material and colour you prefer, the uses of the sink, the number and bowl sizes, the type of worktop material you propose to use and the base unit space available to install within.

Your long-term satisfaction with the product is important to us. In the event that you require spare parts for your Abode product, please contact our technical support team or visit our web site for further technical information.

THE SMALL PRINT

Abode is a division of Norcros Group (Holdings) Limited.

Abode, Distinctly, More is Less, Aquifier, Proboil and Pronteau are registered trademarks of Abode.

Errors and omissions excepted.

Our policy is to continually improve and develop our products, and accordingly we reserve the right to amend specifications, particulars of weights, measures, prices, dimensions, finish and colour availability without prior notice.

For pricing please refer to our separate price list or company website. All prices displayed include VAT at 20% and are the manufacturers' recommended prices only.

January 2022

Abode would like to thank:

Second Nature Kitchens, Daval Furniture and CRL Stone (with photography by Paul Craig) for the use of their beautiful products in the photography used in this brochure.

Design:

Stephanie Masters
0747 500 1066

Photography:

Iain Klieve Photographer
07391 039 289



View the full suite of Abode literature at www.abodedesigns.co.uk

abode

Zenith Park,
Whaley Road,
Barnsley,
South Yorkshire
S75 1HT
Tel: 01226 283434

www.abodedesigns.co.uk
www.pronteau.co.uk

January 2022